

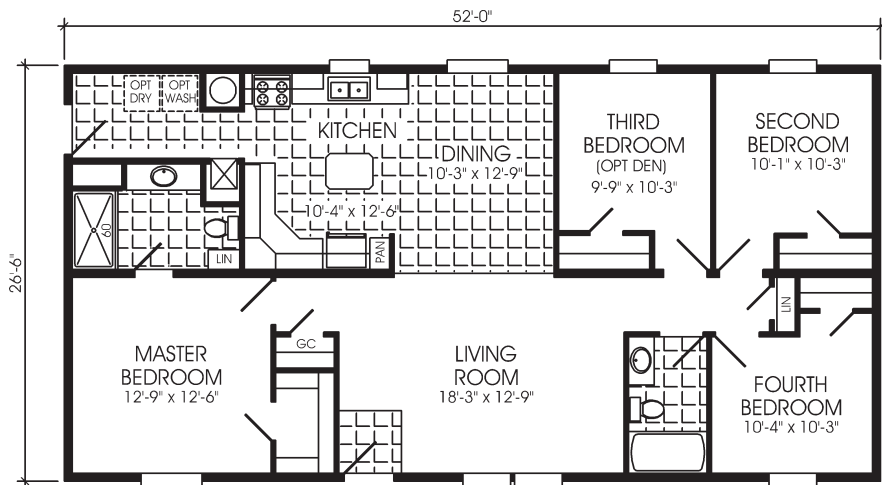
Canadian



Z240

1

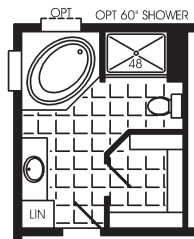




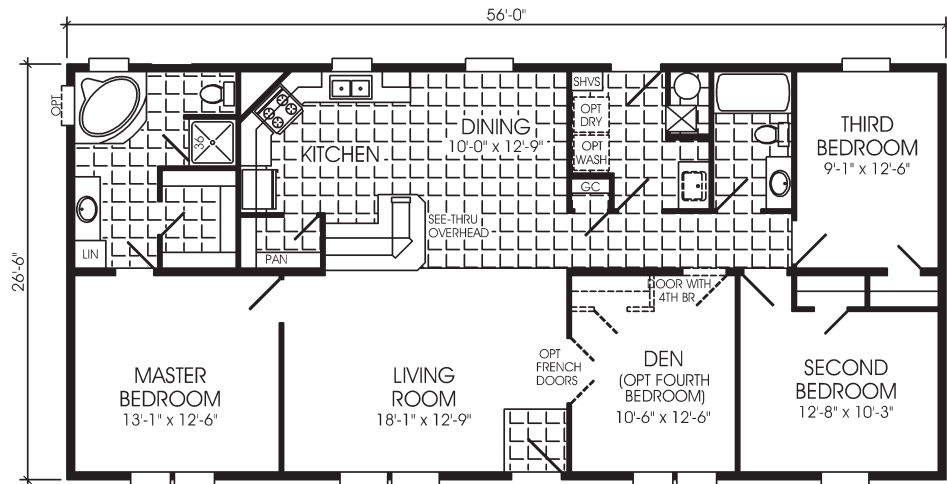
1378 SQ. FT.

4BR, 2BA

285675CA



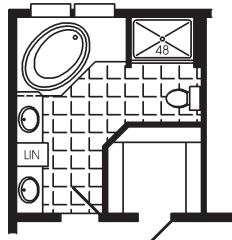
OPTIONAL MASTER BATH
FOR 286060CA



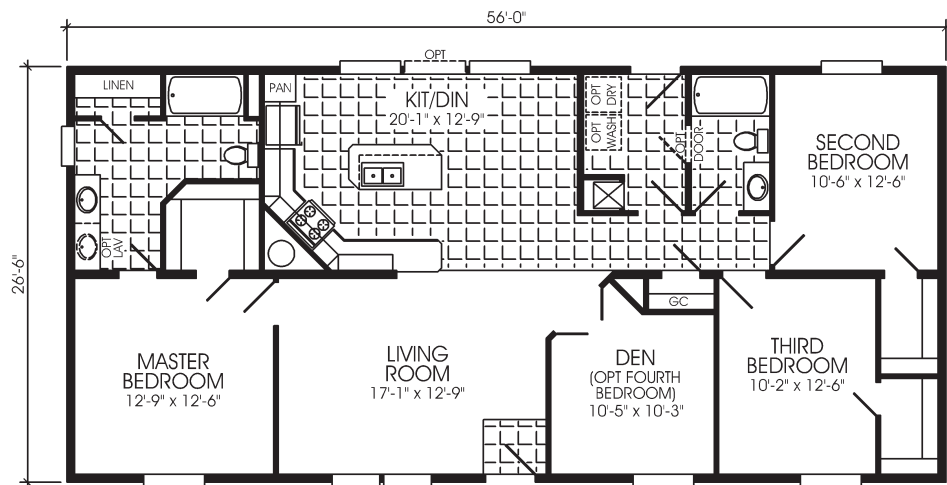
1484 SQ. FT.

3BR, 2BA, STUDY

286060CA



OPTIONAL MASTER BATH
FOR 286088CA

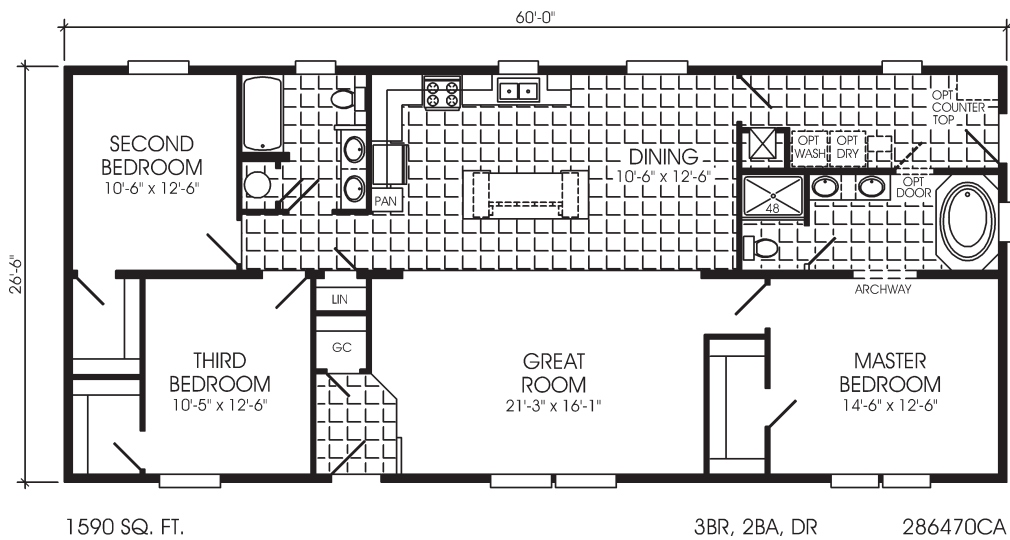
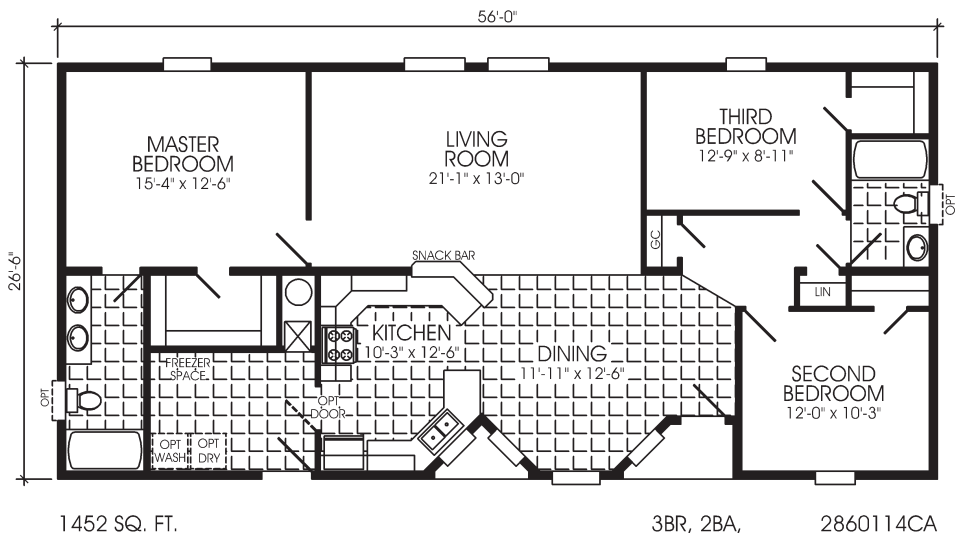
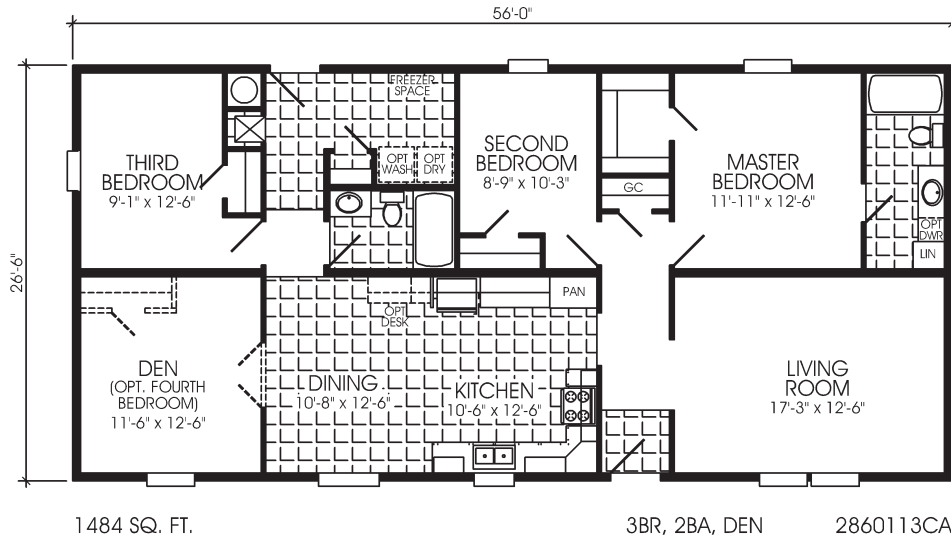


1484 SQ. FT.

3BR, 2BA, ISLAND KITCHEN, DEN

286088CA





STANDARD FEATURES for ARLINGTON SOVEREIGN (CD SERIES) SECTIONALS

EXTERIOR CONSTRUCTION FEATURES

- ♦ Vinyl Lap Siding – Durable & Attractive
- ♦ Residential Shutters Front Doorside & Hitch End
- ♦ OSB Backer & House Wrap Behind Vinyl Siding – For Sturdiness & Insulation
- ♦ All Wood 2 X 8 Floor Joists 16" On Center – Provides a Solid Foundation
- ♦ Wood 2 X 6 Exterior Studs 16" On Center – Solid Exterior Wall Construction
- ♦ 96" Sidewalls
- ♦ Detachable Hitches – Removable for the Finished Look
- ♦ Vinyl Thermopane Low E Windows – Energy Efficient & Easy to Clean
- ♦ 38" Steel 6-Panel Front Door with Storm (2-Lite View & Vent Roll-Up Screen)
- ♦ 38" Steel 6-Panel 9-Lite Rear Door with Storm (2-Lite View & Vent Roll-Up Screen)
- ♦ Exterior Light at Each Door – Provides Light & Enhances Safety
- ♦ Exterior Frost-Free Faucet for Landscaping Applications
- ♦ Exterior Electrical Receptacle – with a GFI for a Safe Exterior Electrical Supply

ROOF CONSTRUCTION FEATURES

- ♦ Twenty-Five Year Warranty Shingles – Gives the Owner a Low Maintenance Home
- ♦ Twelve Inch Eaves with Ventilated Soffits – Helps Protect Home from the Weather & Provides Ventilation
- ♦ Sturdy 24" OC Rafters – Adds Strength & Durability

INTERIOR FEATURES

- ♦ Durable Anchorage II 25 oz. Carpet – Adds Beauty to Your Decor
- ♦ 6.0# Rebond Carpet Pad

- ♦ Vinyl Floor Coverings in Kitchens & Baths – Name Brand Elegance & Durability
- ♦ Decorative Drape Valance with Mini Blinds – Helps Regulate Natural Light with a Colorful Touch
- ♦ Popcorn Textured Flat Ceilings Throughout – Gives the Interior an Open Airy Appearance
- ♦ Color Coordinated Vinyl Covered Gypsum Wall Panels Throughout
- ♦ Glass Chandelier in the Dining Room – Touch of Elegance
- ♦ Vented Metal Shelving in All Wardrobes – Durable yet Attractive
- ♦ Color Coordinated Crown Ceiling Cove Molding Throughout – The Finishing Touch for Your Decor
- ♦ Bedroom Overhead Lights – Illumination at the Flick of a Switch
- ♦ Glass Light Fixtures Throughout to Brighten the Home's Interior
- ♦ Color-Coordinated Passage Doors, with Metal Hardware, Heavy Duty Hinges & Wrapped Door Jambs – Adds Life to Your Home
- ♦ Plumb for Washer/Wire for Dryer – Ready for Your Laundry Appliances
- ♦ Whole-House Water Shut-Off
- ♦ Vinyl Entry – Helps Protect Carpeted Areas
- ♦ Rocker Light Switches – Silent & Easy Operation

KITCHEN FEATURES

- ♦ 30" Electric Range with Rangehood
- ♦ 18 Cubic Foot Double Door Frost Free Refrigerator with Glass Shelves
- ♦ Ash Flat Panel Cabinet Doors & Wrapped Face Frames
- ♦ Drawers Over Doors in Kitchen Base Cabinets with Silent Glide Drawer Guides – Storage

- ♦ Drawers in Convenient Locations
- ♦ Deep Cabinets with Finished Interior Kitchen Base Cabinets – Extra Storage with the Finished Look
- ♦ Cabinet Over the Refrigerator – Convenient Extra Storage
- ♦ Deep Composite Sink with Single-Lever Faucet & Sprayer – Plenty of Room for Dishwashing
- ♦ Linen in All Models – Spacious Storage for a Family's Provisions

BATH FEATURES

- ♦ One Piece Fiberglass Tub in Baths – Easy to Clean Elegance
- ♦ China Bathroom Sinks with Single-Lever Faucets & Pop-Up Drains – Heavy Duty Yet Elegant
- ♦ Bath Vent Fans in All Baths – Promotes Air Circulation & Removes Humidity
- ♦ Humidistat in Bath #1
- ♦ Mirrors & Decorative Lights in all Baths – Adds Illumination & Elegance

ENERGY, SAFETY AND OTHER QUALITY LIVING FEATURES

- ♦ Insulation in the Roof (R44), Exterior Walls (R20) & Floors (R28)
- ♦ Gas Furnace
- ♦ 40 Gallon Gas Water Heater – Supplies Extra Capacity for all Hot Water Uses
- ♦ Nordyne Ventilair III Air Circulation System for Fresh Air Recirculation in the Home
- ♦ Smoke Detector(s) Adjacent to Bedroom Areas
- ♦ 200 Amp Electrical Panel Box with All Copper Wiring
- ♦ Fiberglass Perimeter Heat Ducts with Baseboard Registers
- ♦ Built to CSA Z240 Construction & Safety Standards & Inspected for Compliance by Third Party Inspectors

