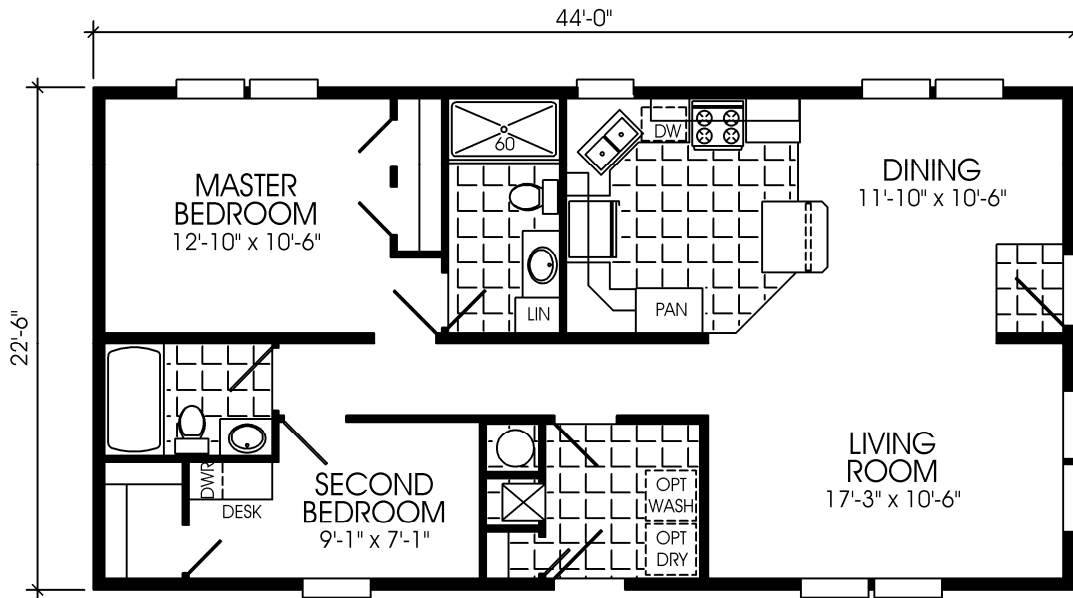


# Canadian Z240

## Arlington Series

### Sectional Homes

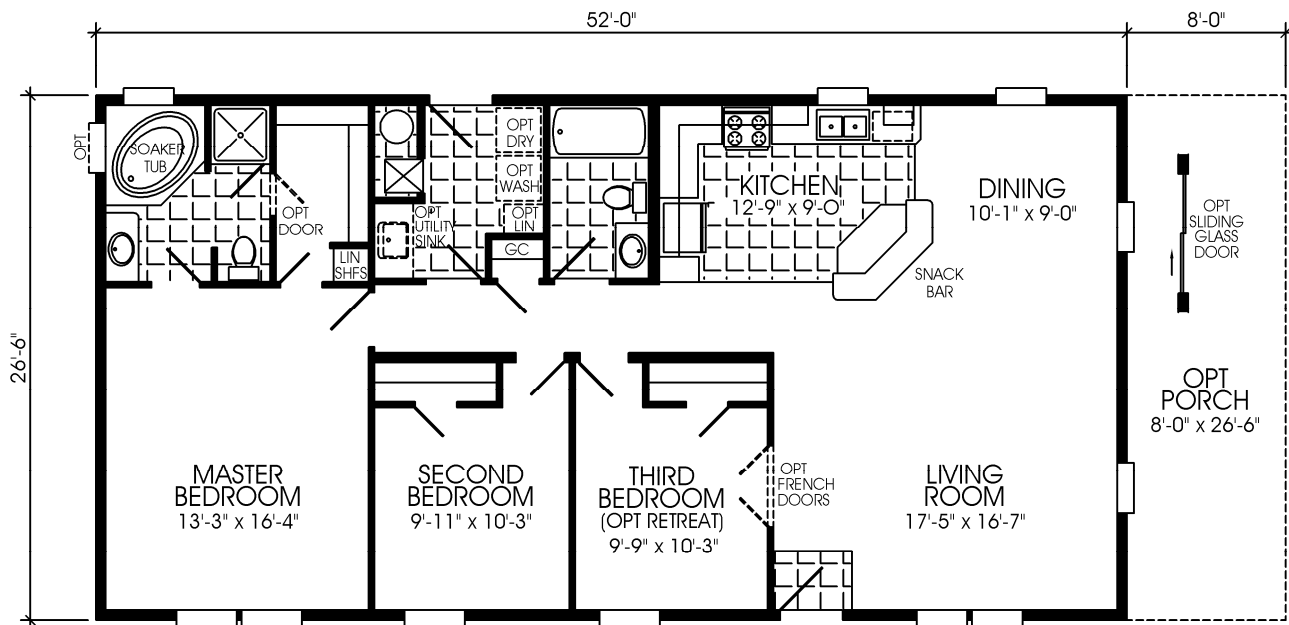


990 SQ. FT.

2BR, 2BA, DR

244834CA

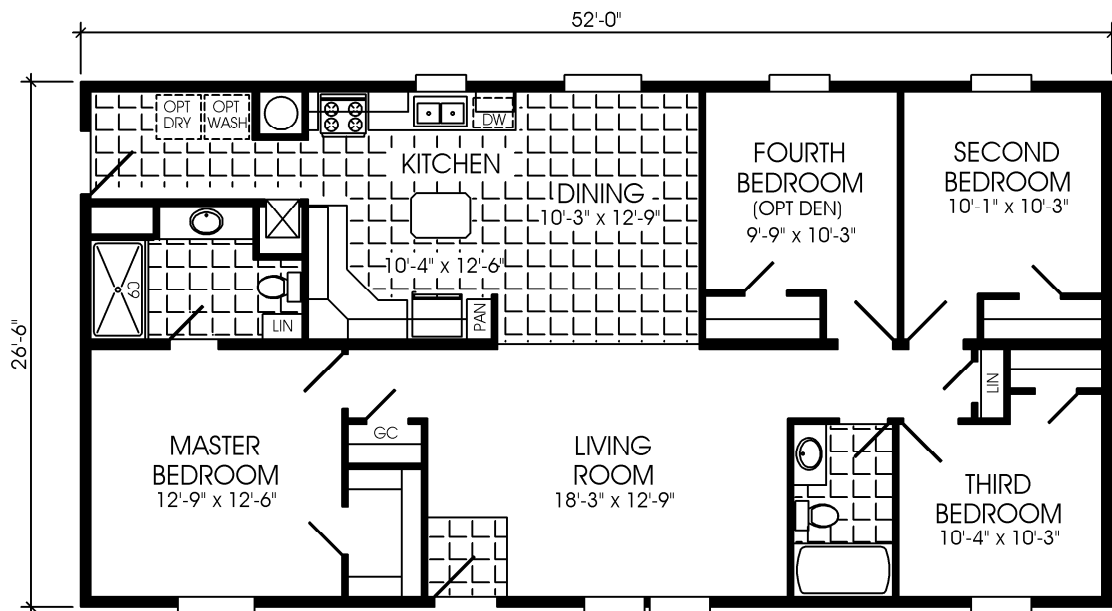




1378 SQ. FT.

3BR, 2BA, LUXURY BATH

285647CA

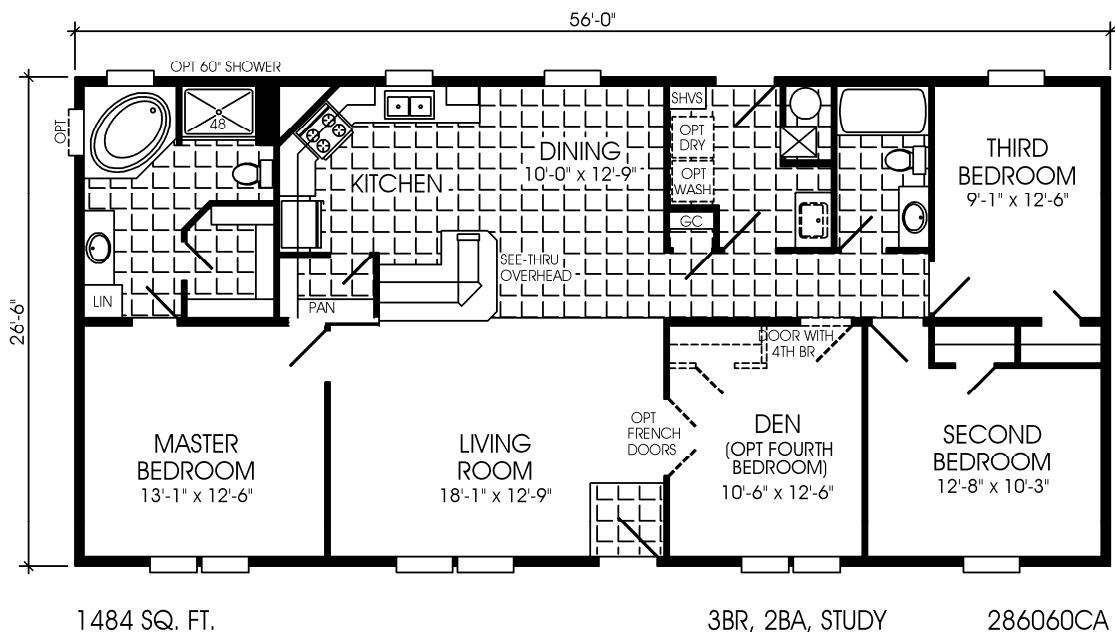
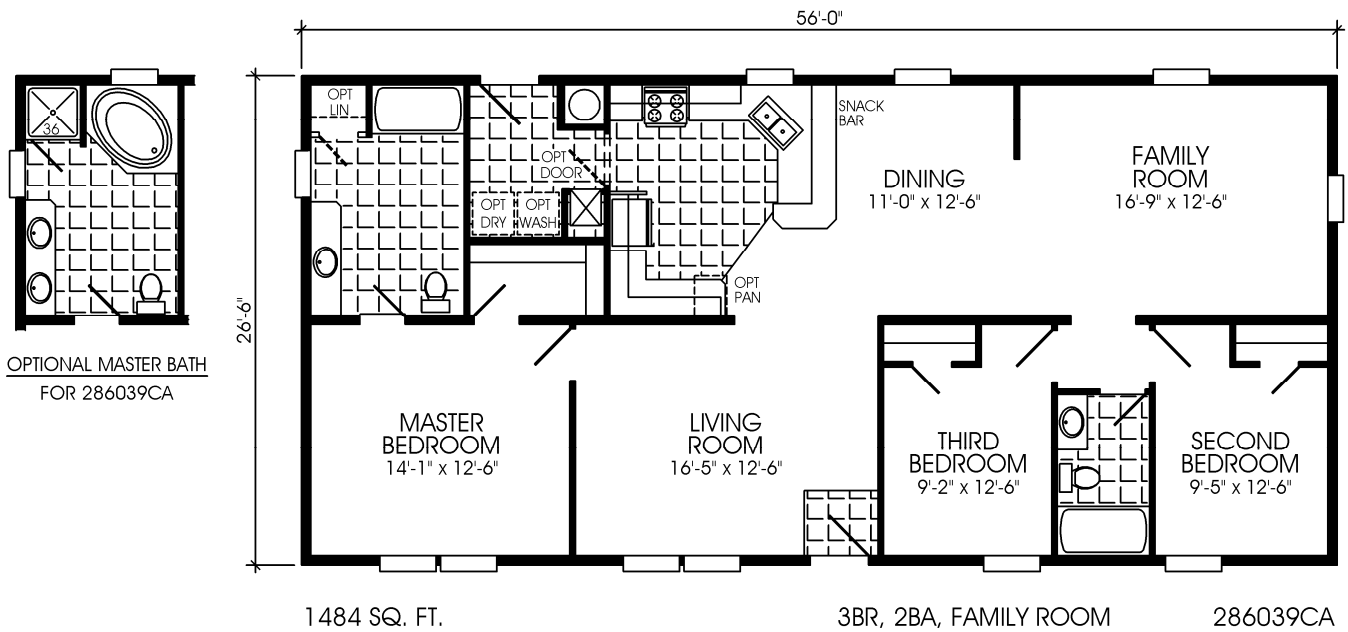


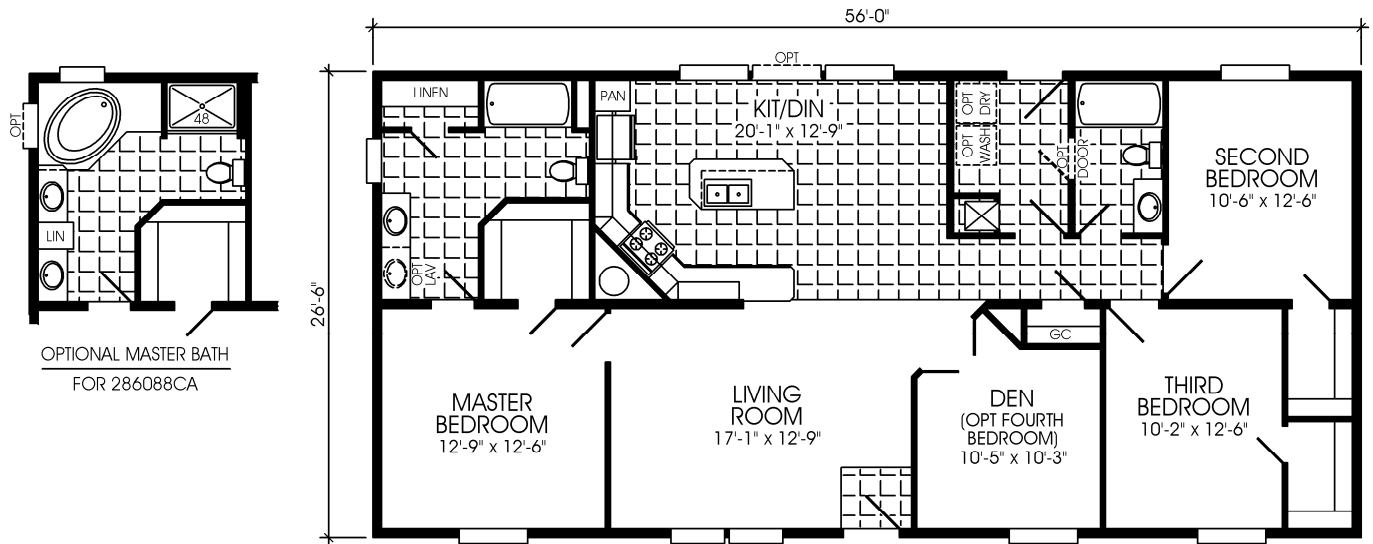
1378 SQ. FT.

4BR, 2BA

285675CA



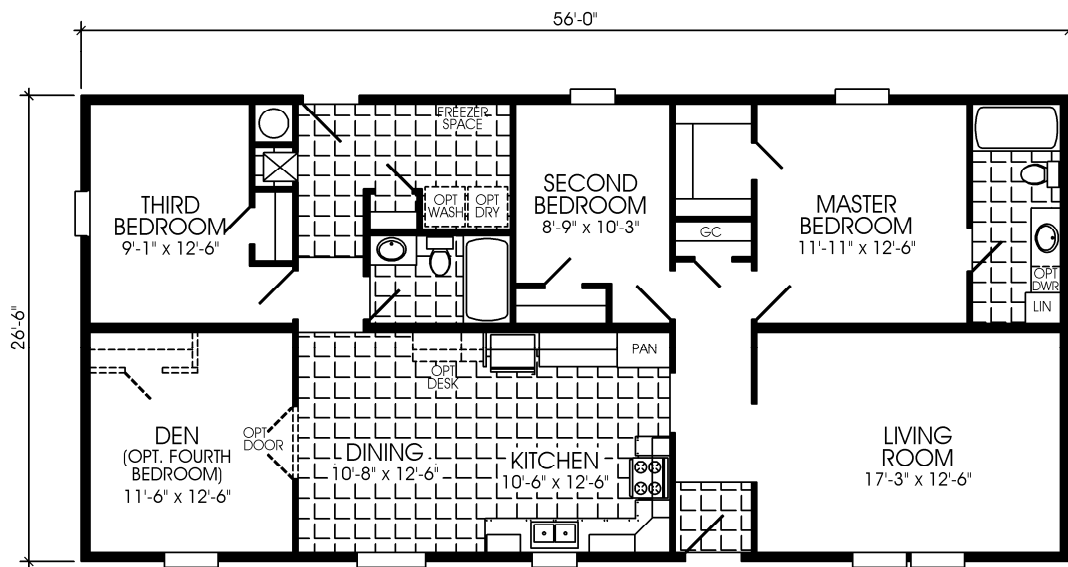




1484 SQ. FT.

3BR, 2BA, ISLAND KITCHEN, DEN

286088CA



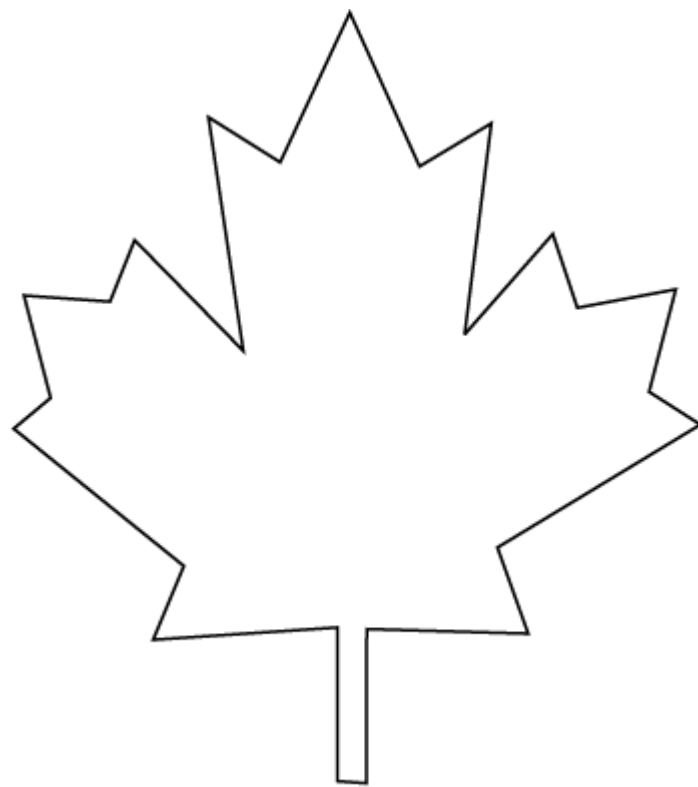
1484 SQ. FT.

3BR, 2BA, DEN

2860113CA









**SHERIDAN, OREGON STANDARD FEATURES for**  
**ARLINGTON REGAL (CC SERIES) / ARLINGTON SOVEREIGN (CD SERIES)**

**EXTERIOR CONSTRUCTION FEATURES**

- ♦ D2 5/8" Engineered Floor Decking
- ♦ Vinyl Lap Siding – Durable & Attractive
- ♦ **(Residential Shutters Front Doorside & Hitch End Standard in CD Series)**
- ♦ OSB Backer & House Wrap Behind Vinyl Siding – For Sturdiness & Insulation
- ♦ All Wood 2 X 8 Floor Joists 16" On Center – Provides a Solid Foundation
- ♦ Wood 2 X 6 Exterior Studs 16" On Center – Solid Exterior Wall Construction
- ♦ 90" Sidewalls
- ♦ Detachable Hitches – Removable for the Finished Look
- ♦ Vinyl Thermopane Low E Windows – Energy Efficient & Easy to Clean
- ♦ Steel 6-Panel with Viewer Front Door & Storm
- ♦ Steel 6-Panel 9-Lite Rear Door with Storm
- ♦ Deadbolt Locks for Greater Security
- ♦ Exterior Light at Each Door – Provides Light & Enhances Safety
- ♦ Exterior Frost-Free Faucet for Landscaping Applications
- ♦ Exterior Electrical Receptacle – with a GFI for a Safe Exterior Electrical Supply

**ROOF CONSTRUCTION FEATURES**

- ♦ Twenty-Five Year Warranty Shingles – Gives the Owner a Low Maintenance Home
- ♦ Twelve Inch Eaves with Ventilated Soffits – Helps Protect Home from the Weather & Provides Ventilation
- ♦ Sturdy 24" OC Rafters – Adds Strength & Durability

**INTERIOR FEATURES**

- ♦ Durable Anchorage II 25 oz. Carpet – Adds Beauty to Your Decor
- ♦ 6.0# Rebond Carpet Pad
- ♦ Vinyl Floor Coverings in Kitchens & Baths – Name Brand Elegance & Durability
- ♦ Decorative Drape Valance with Mini Blinds – Helps Regulate Natural Light with a Colorful Touch
- ♦ Textured Cathedral Ceilings Throughout – Gives the Interior an Open Airy Appearance
- ♦ Covered Gypsum Wall Panels Throughout
- ♦ Glass Chandelier in the Dining Room – Touch of Elegance
- ♦ Vented Metal Shelving in All Wardrobes – Durable yet Attractive
- ♦ White Crown Ceiling Cove Molding Throughout – The Finishing Touch for Your Decor
- ♦ Glass Light Fixtures Throughout to Brighten the Home's Interior
- ♦ White Passage Doors, with Metal Hardware, Heavy Duty Hinges & Wrapped Door Jams – Adds Life to Your Home
- ♦ Plumb for Washer/Wire for Dryer – Ready for Your Laundry Appliances
- ♦ Whole-House Water Shut-Off
- ♦ Vinyl Entry – Helps Protect Carpeted Areas
- ♦ Rocker Light Switches – Silent & Easy Operation

**KITCHEN FEATURES**

- ♦ 30" Electric Range with Rangehood
- ♦ 18 Cubic Foot Double Door Frost Free Refrigerator with Glass Shelves

- ♦ Raised Panel Cabinet Doors & Wrapped Face Frames
- ♦ Deep Cabinets with Finished Interior Kitchen Base Cabinets – Extra Storage with the Finished Look
- ♦ Cabinet Over the Refrigerator – Convenient Extra Storage
- ♦ Deep Composite Sink with Single-Lever Faucet & Sprayer – Plenty of Room for Dishwashing

**BATH FEATURES**

- ♦ One Piece Fiberglass Tub in Baths – Easy to Clean Elegance
- ♦ China Bathroom Sinks with Single-Lever Faucets & Pop-Up Drains – Heavy Duty Yet Elegant
- ♦ Bath Vent Fans in All Baths – Promotes Air Circulation & Removes Humidity
- ♦ Humidistat in Baths
- ♦ Mirrors & Decorative Lights in all Baths – Adds Illumination & Elegance

**ENERGY, SAFETY AND OTHER QUALITY LIVING FEATURES**

- ♦ Insulation in the Roof (R40), Exterior Walls (R20) & Floors (R28)
- ♦ Gas Furnace
- ♦ 40 Gallon Gas Water Heater – Supplies Extra Capacity for all Hot Water Uses
- ♦ Nordyne Ventilare III Air Circulation System for Fresh Air Recirculation in the Home
- ♦ Smoke Detector(s) Adjacent to Bedroom Areas
- ♦ 200 Amp Electrical Panel Box with All Copper Wiring
- ♦ Fiberglass Heat Ducts
- ♦ Built to CSA Z240 Construction & Safety Standards & Inspected for Compliance by Third Party Inspectors

09 Arlington Regal (CC) & Sovereign (CD) std features.doc

Effective Date: 03/23/09  
Rev 03/18/09

Model number includes the overall length of the home, including approximately 48" for the hitch. Some tires, wheels, axles, and other components may be reused after inspection. Floor width of model 12s is 141", 14s is 165", 16s is 186", 24s is 270", 28s is 318", 32s is 360", and 42s is 477" to allow for necessary road clearance. Interior dimensions are to the wall surface and based on 2x6 exterior walls. Square footage is based on overall outside floor dimension. All prices and specifications are subject to change without notice.

OR-CCCD-09 Issued 3/15/09 Revised 8/7/09

