

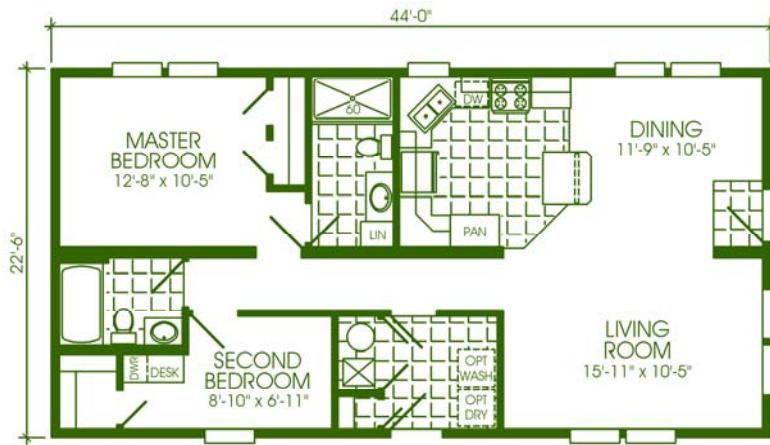
Canadian A277

Modular Floor Plans

Sectional Homes

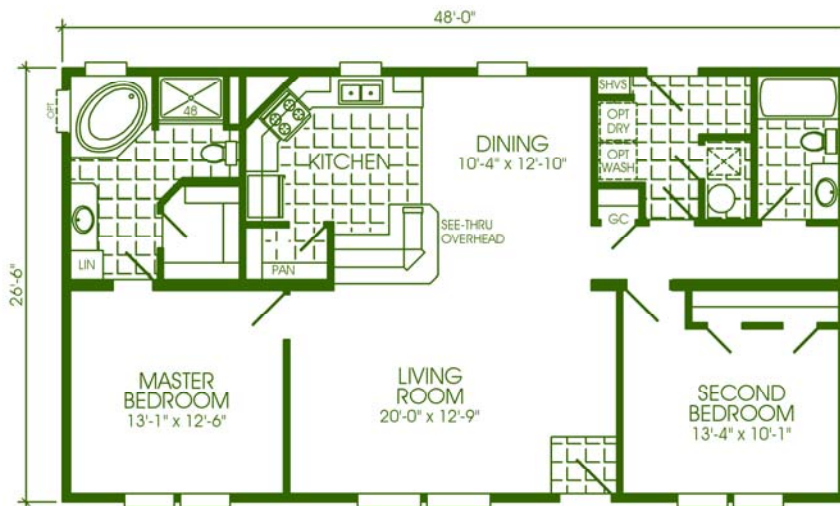


OPTIONAL BASEMENT ENTRY
NOT AVAILABLE FOR M2R44-02CA



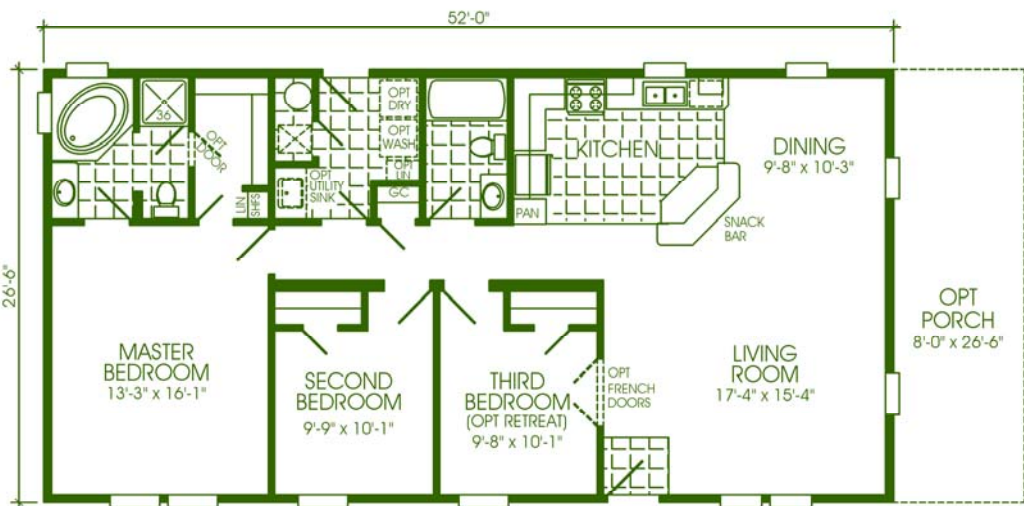
990 SQ. FT. 2BR, 2BA, DR M2R44-02CA

OPTIONAL BASEMENT ENTRY
NOT AVAILABLE FOR M3R48-14CA



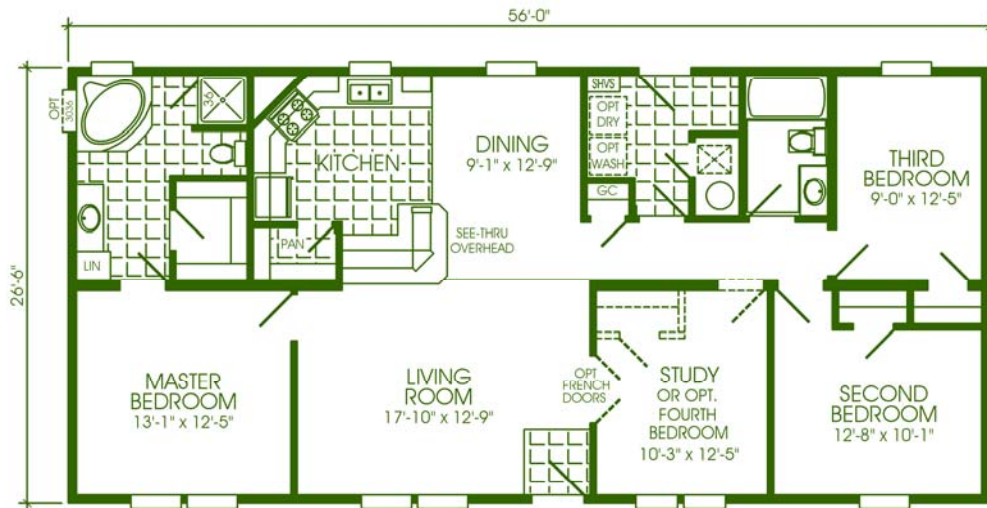
1272 SQ. FT. 2BR, 2BA, STUDY M3R48-14CA

OPTIONAL BASEMENT ENTRY
NOT AVAILABLE FOR M3R52-13CA



1378 SQ. FT. 3BR, 2BA, LUXURY BATH M3R52-13CA





1484 SQ. FT.

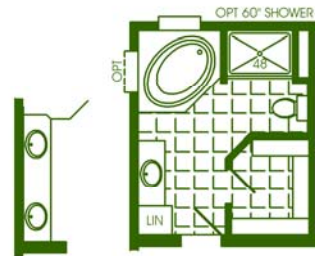
3BR, 2BA, STUDY

M3R56-15CA

OPTIONAL BASEMENT ENTRY
NOT AVAILABLE FOR M3R56-15CA

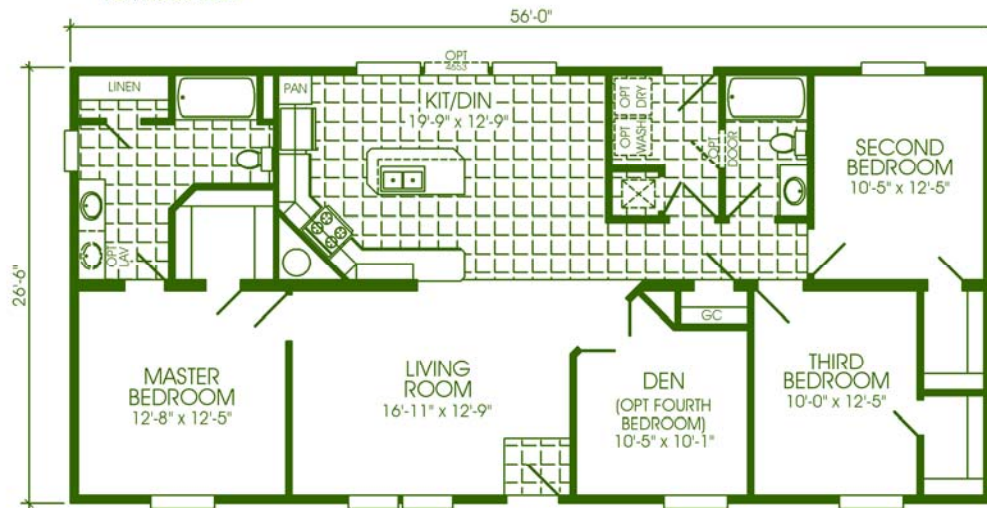


OPTIONAL MASTER BATH
FOR M3R56-20CA



OPTIONAL
DOUBLE BOWL LAV

OPTIONAL MASTER BATH
FOR M3R56-15CA



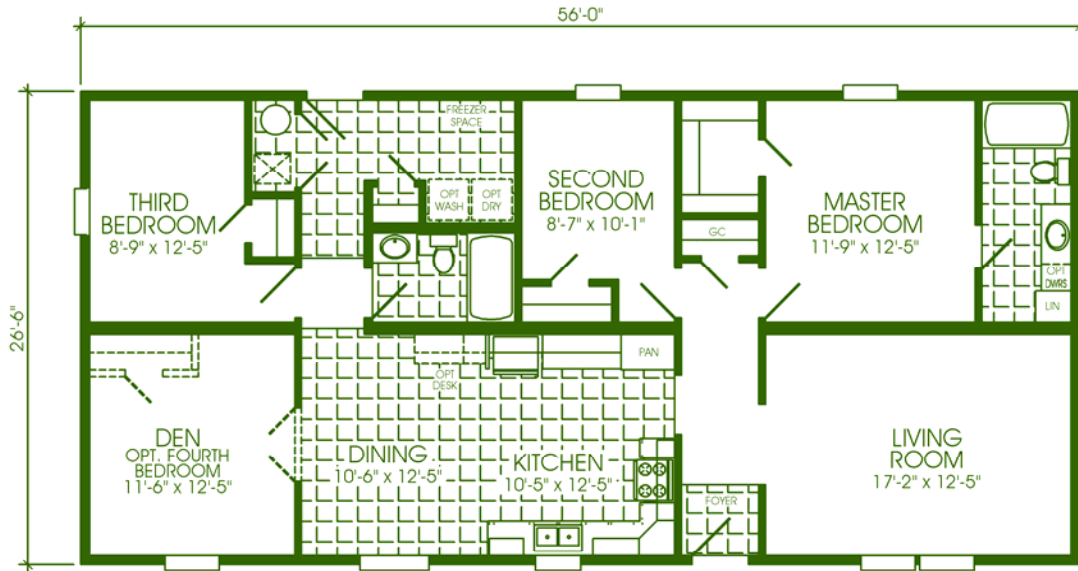
1484 SQ. FT.

3BR, 2BA, ISLAND KITCHEN, DEN

M3R56-20CA

OPTIONAL BASEMENT ENTRY
NOT AVAILABLE FOR M3R56-20CA



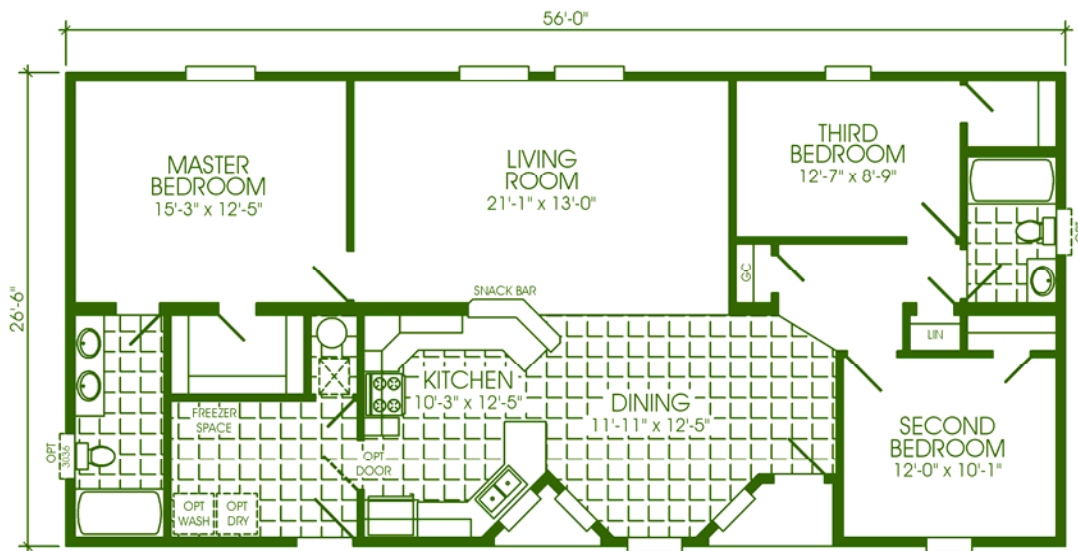


1484 SQ. FT.

3BR, 2BA, DEN

M3R56-28CA

OPTIONAL BASEMENT ENTRY
NOT AVAILABLE FOR M3R56-28CA



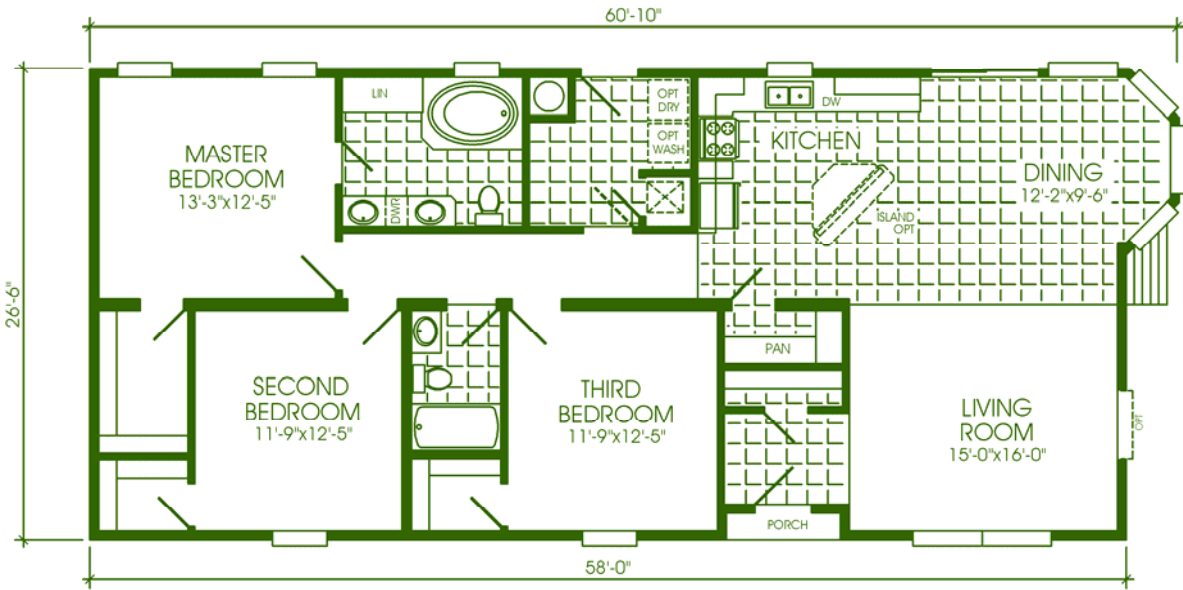
1452 SQ. FT.

3BR, 2BA,

M3R56-29CA

OPTIONAL BASEMENT ENTRY
NOT AVAILABLE FOR M3R56-29CA



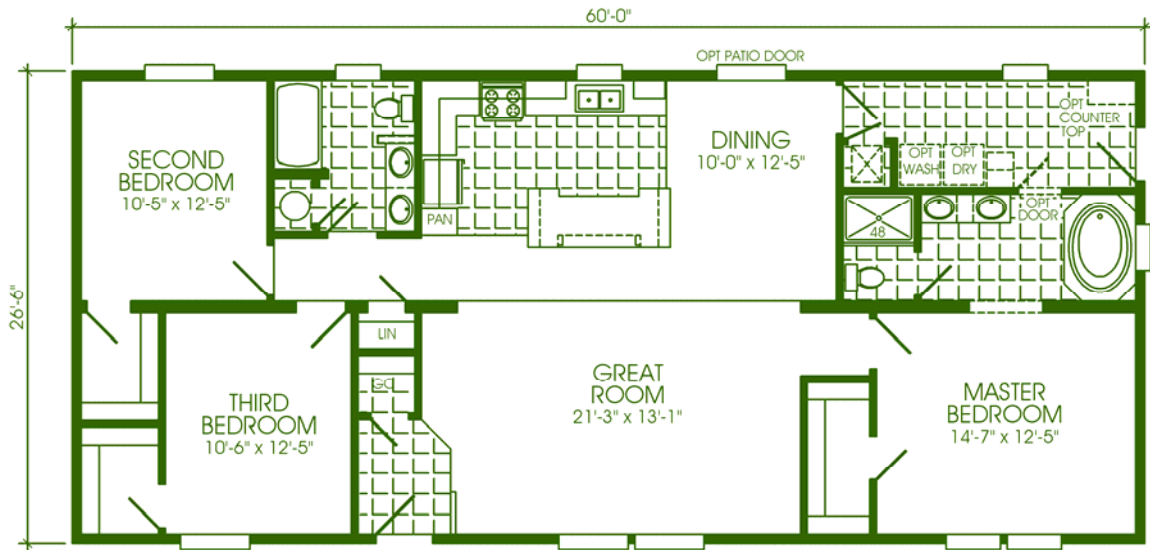


1539 SQ. FT.

3BR, 2BA, DR

M3R58-03CA

OPTIONAL BASEMENT ENTRY
NOT AVAILABLE FOR M3R58-03CA



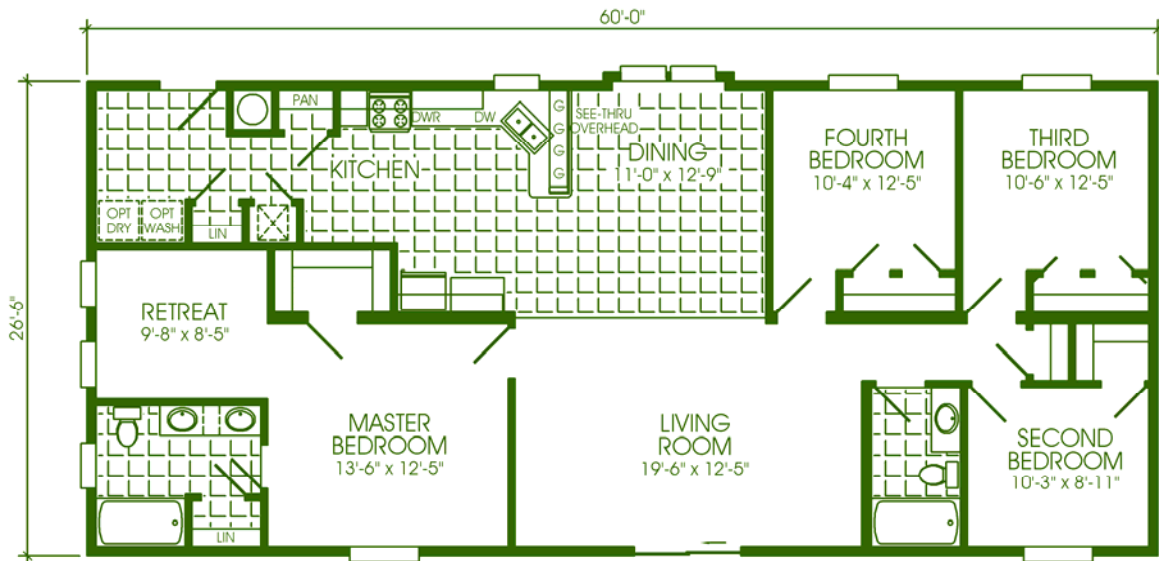
1590 SQ. FT.

3BR, 2BA

M3R60-20CA

OPTIONAL BASEMENT ENTRY
NOT AVAILABLE FOR M3R60-20CA



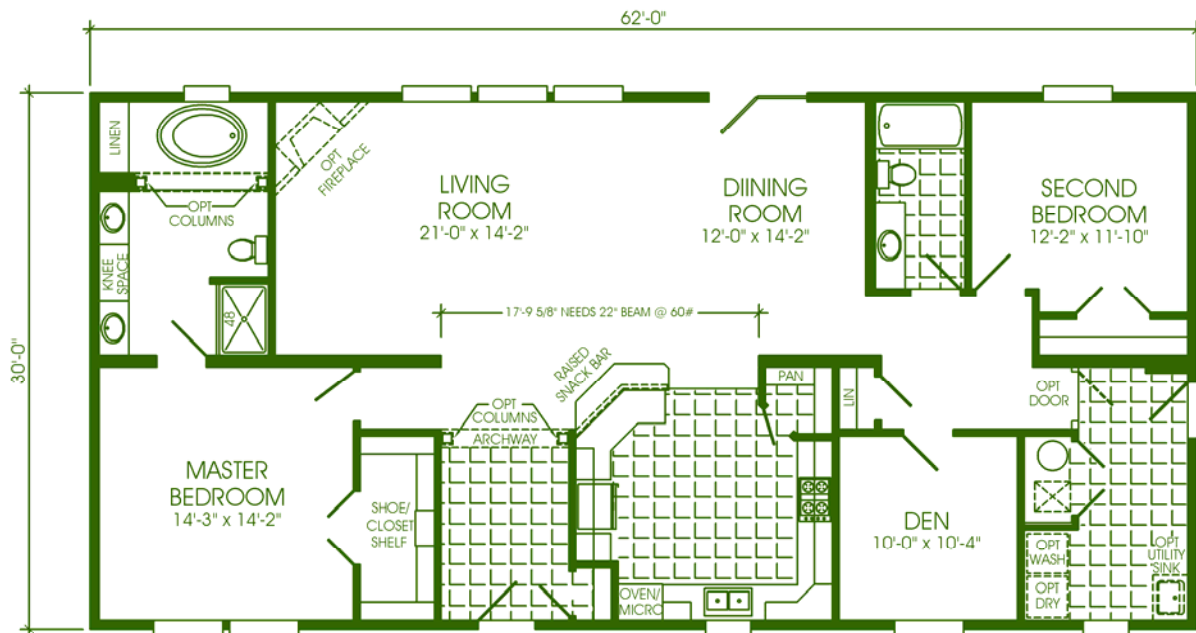


1590 SQ. FT.

4BR 2BA RETREAT

M3R60-38CA

OPTIONAL BASEMENT ENTRY
NOT AVAILABLE FOR M3R60-38CA



1860 SQ. FT.

2BR, 2BA, DEN, LUXURY BATH

M4R62-05CA

OPTIONAL BASEMENT ENTRY
NOT AVAILABLE FOR M4R62-05CA



**SHERIDAN, OREGON STANDARD FEATURES for WALNUT GROVE SOVEREIGN
SECTIONAL MODULAR (F9 SERIES)**

- ♦ Site Ready Package Includes:
 - ♦ Gas Furnace
 - ♦ 40 Gallon Gas Water Heater
 - ♦ R28 Floor Insulation
 - ♦ Bottom Board
 - ♦ Drain Lines
 - ♦ Water Lines
 - ♦ Perimeter Heat

FLOOR

- ♦ 2 X 8 Floor Joist 16" OC
- ♦ 2 X 8 Rim Joist
- ♦ D2 5/8" Engineered Floor Decking

CARPET

- ♦ Anchorage II 25 oz. in Living Room, Dining Room, Hall & All Bedrooms
- ♦ 6.0 # Rebond Carpet Pad
- ♦ Vinyl Roll Goods
- ♦ Legacy Entry Roll Goods

PLUMBING

- ♦ Water Shut-Offs Standard
- ♦ 60" 1-Piece Tub
- ♦ 1-Piece Fiberglass Separate Shower with Door as Shown
- ♦ 1.6 Gallon Toilets
- ♦ China Sink with Overflow & Pop-Up Drains in Bath
- ♦ Plumb for Washer

FAUCETS

- ♦ Single Lever with Sprayer in Kitchen
- ♦ Single Lever in Baths
- ♦ Residential Anti-Scald Tub Diverter & Shower
- ♦ Frost Free Anti-Siphon 8" Exterior

WALLS

- ♦ 2 X 6 Exterior Walls 16" OC with 2 X 6 Double Top Plate
- ♦ 90" Sidewalls
- ♦ Interior Walls 2 X 4 16" OC

INSULATION

- ♦ R20 Side & Ends
- ♦ 1/2" Vinyl Gypsum Wall Panels Throughout

ROOF CONSTRUCTION

- ♦ Roof Attic Vents – Ridge Vents
- ♦ Residential Roof Pitch
- ♦ 7/16" OSB Roof Decking
- ♦ 12" Side & End Eaves
- ♦ R40 Insulation
- ♦ 6 mil Poly Vapor Barrier
- ♦ Cathedral Ceiling Construction Throughout
- ♦ Textured Ceiling Finish
- ♦ Architectural Shingles

ELECTRICAL

- ♦ 200 Amp Main 20/40 Box
- ♦ Rocker Switches
- ♦ Smoke Detector Adjacent to Bedrooms
- ♦ 1 Exterior Receptacle
- ♦ Wire for Dryer

EXTERIOR

- ♦ Vinyl Lap Siding with OSB Backer & House Wrap

DOORS

- ♦ 36" Steel 6-Panel with Viewer Front Door & Storm
- ♦ 36" Steel 6-Panel 9-Lite with Storm Rear Door
- ♦ Dead Bolt Locks

WINDOWS

- ♦ Vinyl Thermopane Low E Windows
- ♦ 12" Raised Panel Shutters on Front Doorside & Hitch End

APPLIANCES

- ♦ 30" Range Hood with Light
- ♦ Bath Vent Fan & Light in Master Bath & 2nd Bath
- ♦ Humidistat in Baths
- ♦ 30" Electric Range
- ♦ Dishwasher Installed
- ♦ 18 CF Refrigerator

DRAPES

- ♦ Optional

CABINETS

- ♦ Drawer Over Door Base
- ♦ 29" Overhead with Finished Interior & Adjustable Shelves
- ♦ Cathedral Real Wood Doors
- ♦ Real Wood Stiles

- ♦ Laundry Overhead Cabinets with Rod Between
- ♦ Wrapped MDF Shelves
- ♦ Satin Chrome Knobs
- ♦ Hidden Hinges
- ♦ Silent Drawer Guides
- ♦ Decorative Ceramic Countertop Edge
- ♦ Ceramic Backsplash in Kitchen & Baths
- ♦ Medicine Cabinet
- ♦ Vented Metal Shelving in Wardrobes

PASSAGE DOORS

- ♦ White Embossed 6-Panel Passage Doors
- ♦ Mortise Hinges
- ♦ Metal Lockset Knobs

TRIM

- ♦ 2 1/4" Pine Interior Door Casings
- ♦ 2 1/4" Pine Exterior Door Casing
- ♦ Floor Mounted Door Stops Throughout
- ♦ Crown on Overhead Cabinets

MIRRORS

- ♦ Mirrors & Decorative Light in All Baths

LIGHT FIXTURES

- ♦ Recessed Can Lights Over Kitchen Sink
- ♦ 8" Pan Light on Ceiling
- ♦ 6-Arm Glass Chandelier in Dining Room
- ♦ Exterior Light at Front & Rear Entry
- ♦ 2-Arm Vanity Lights in Master & 2nd Baths
- ♦ 2 Stem Lights Over Island, Where Applicable
- ♦ Built to CSA A277 Construction & Safety Standards & Inspected for Compliance by Third Party Inspectors

Base prices do not include undercarriages. A line item charge will be put on the invoice. If the undercarriages are returned within 30 days in good condition, a credit will be issued. After 30 days rental charges will be assessed at a rate of \$50/day and will be deducted prior to credit being issued.

