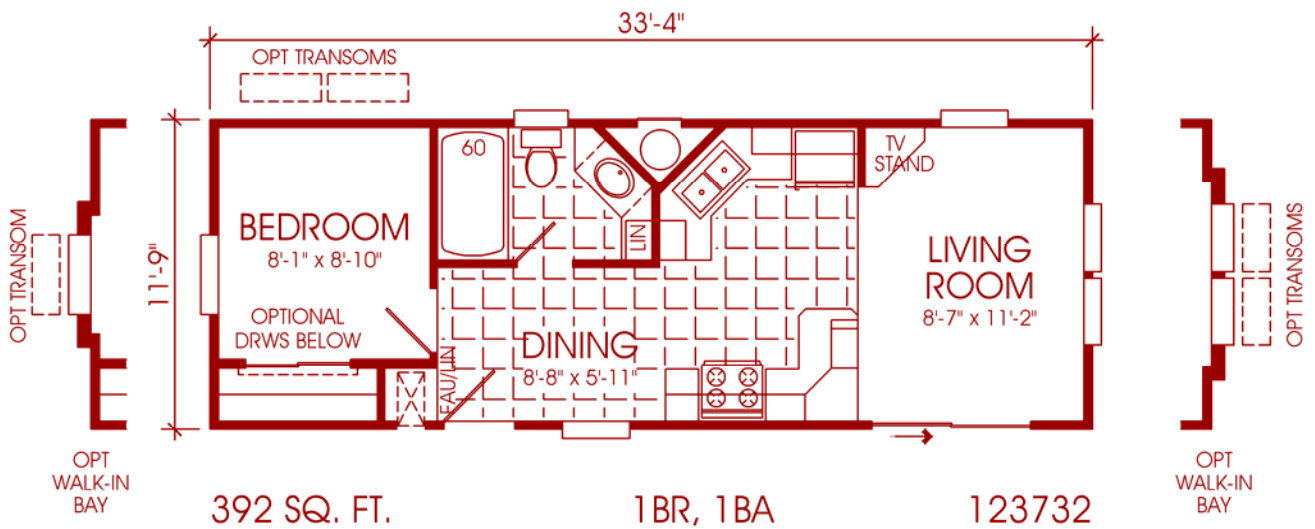
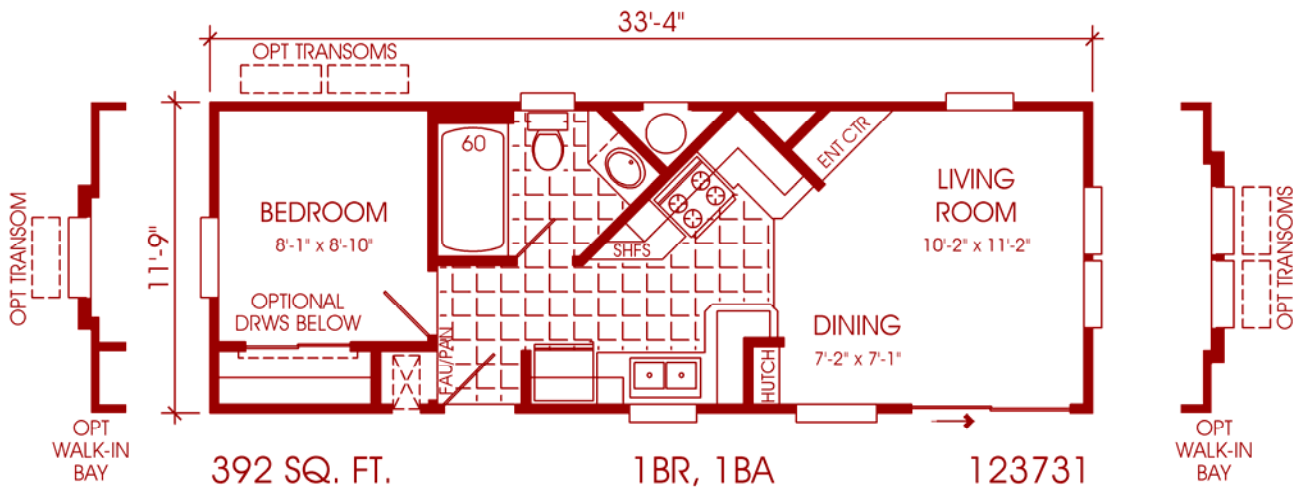
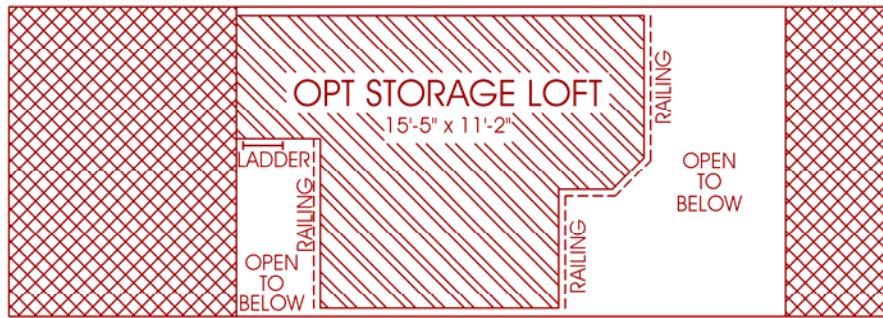




PHOENIX

Park Model Series

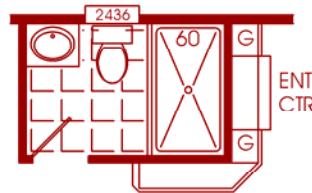




THIS LOFT PLAN DOES NOT MEET CALIFORNIA LOFT CODES

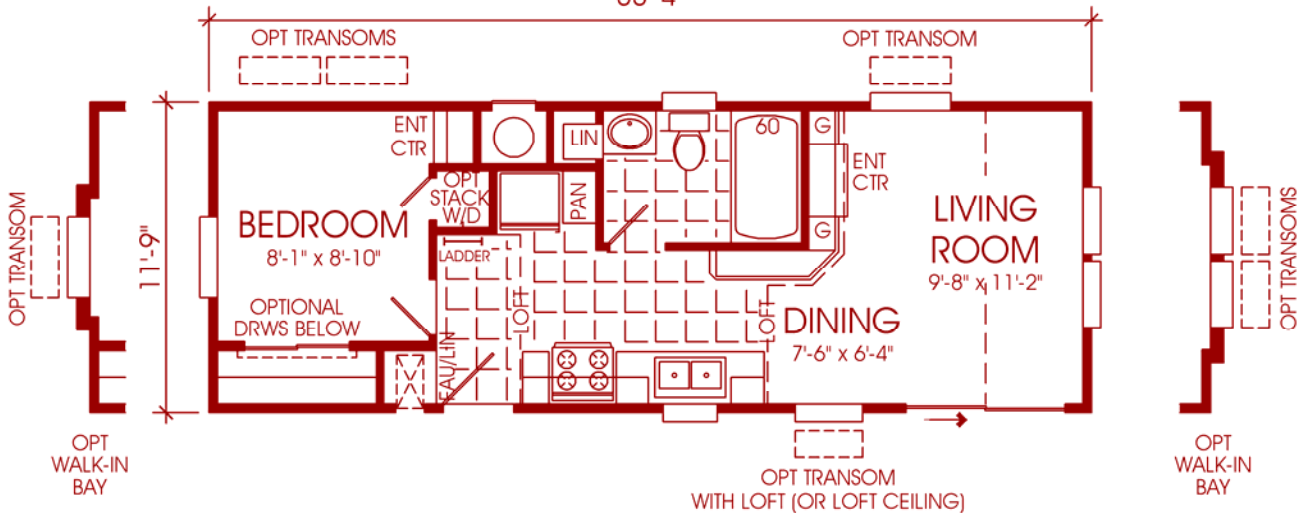


LOFT WINDOW



OPTIONAL 60" SHOWER

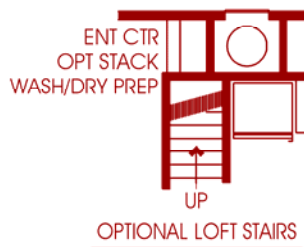
33'-4"



392 SQ. FT.

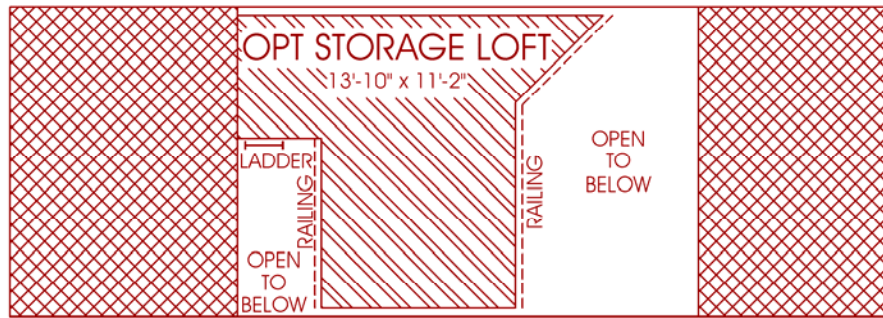
1BR, 1BA, LOFT

123733

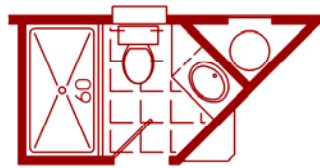


OPTIONAL LOFT STAIRS

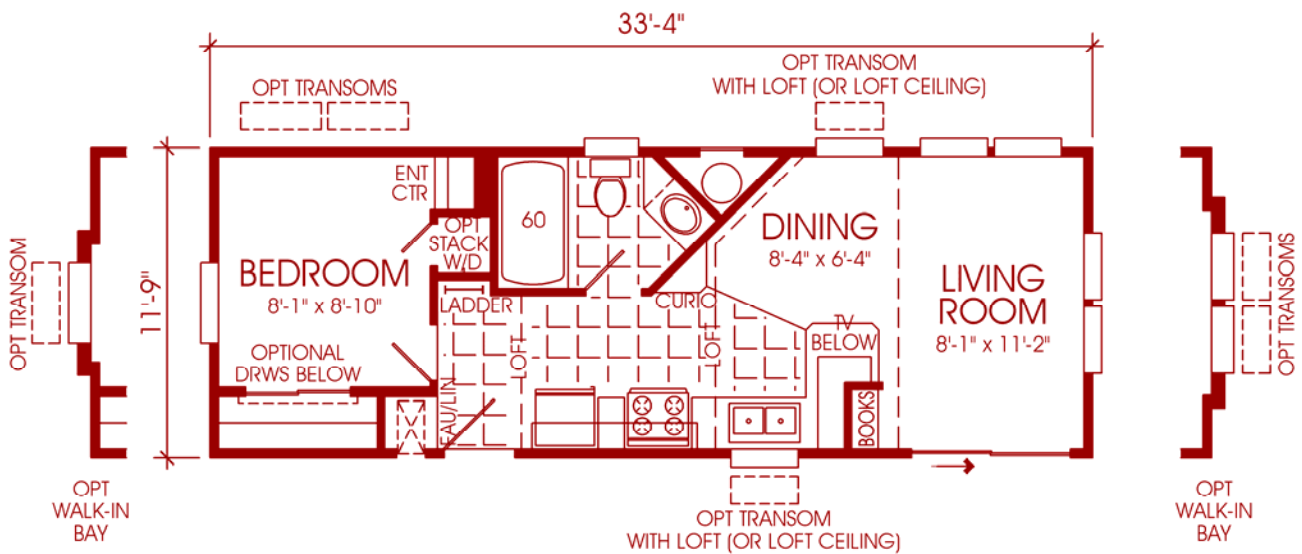




THIS LOFT PLAN DOES NOT MEET CALIFORNIA LOFT CODES



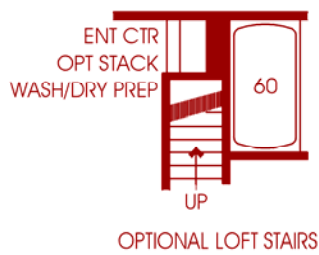
OPTIONAL 60" SHOWER



392 SQ. FT.

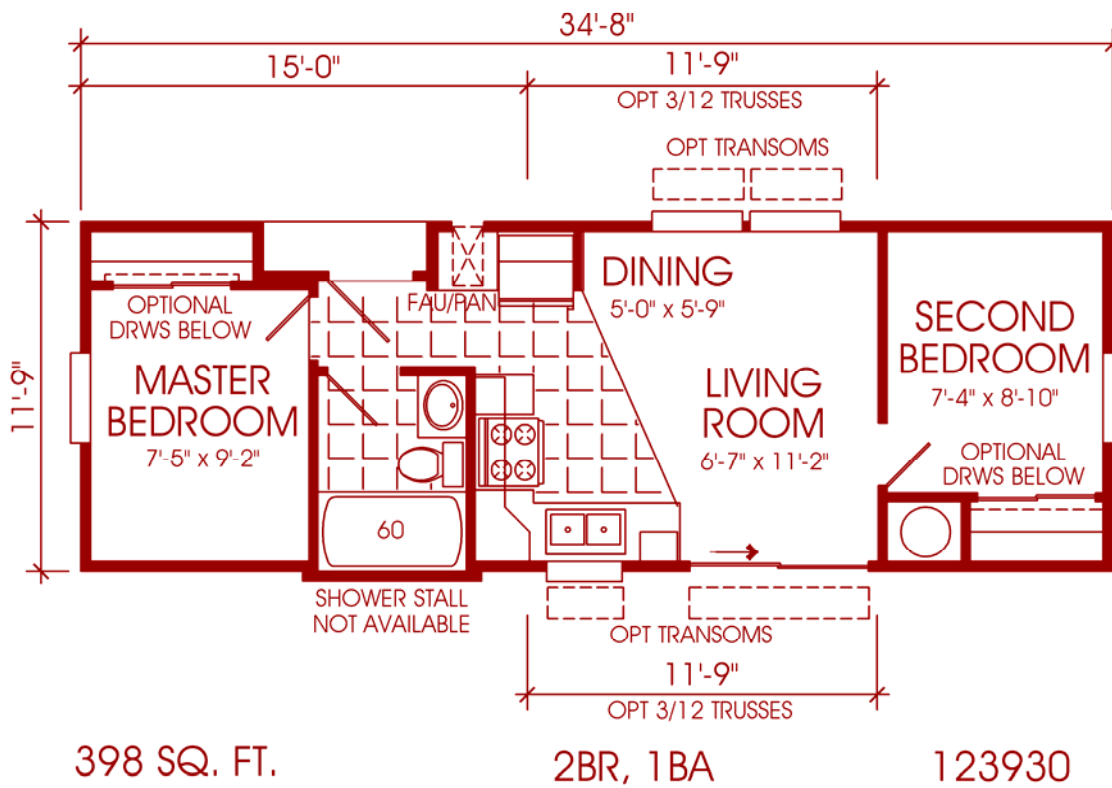
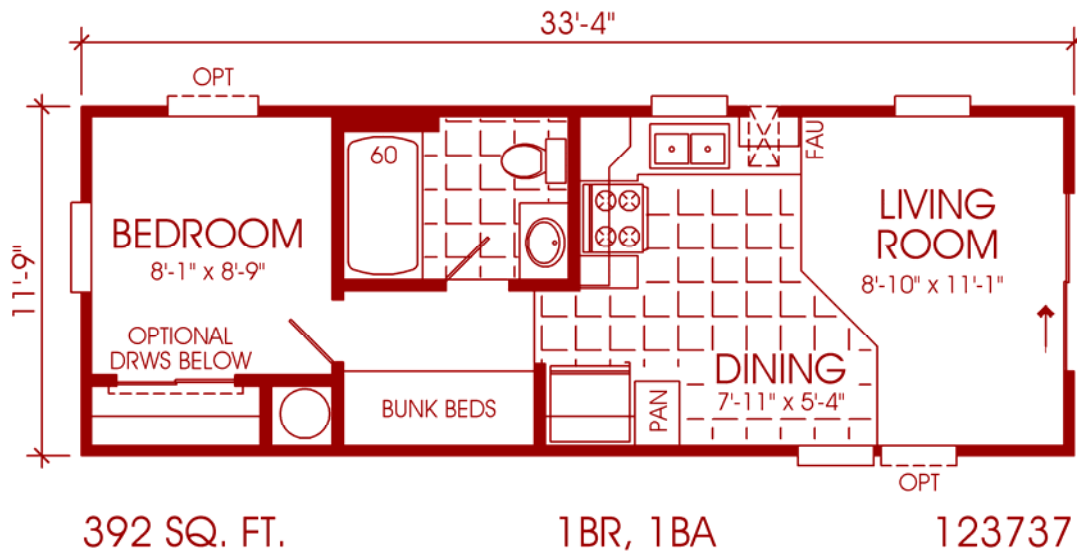
1BR, 1BA, LOFT

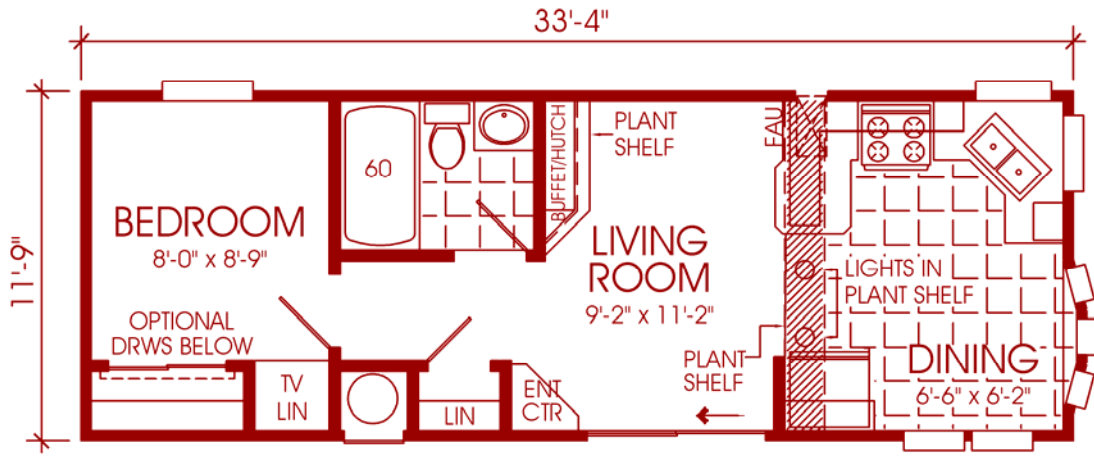
123734



OPTIONAL LOFT STAIRS







392 SQ. FT.

1 BR, 1 BA, LOFT

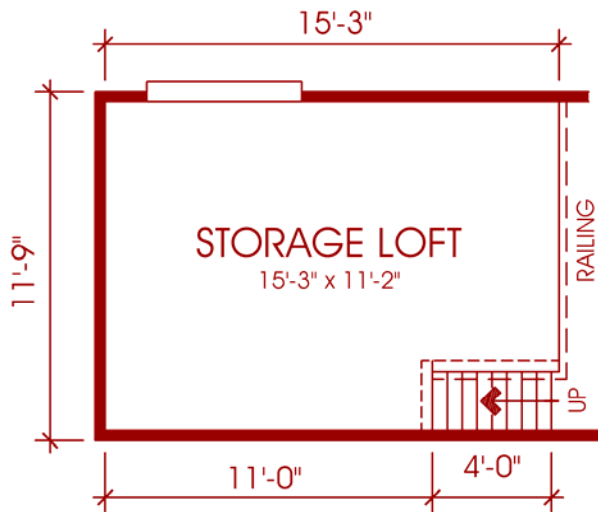
123738



OPTIONAL CLOSET



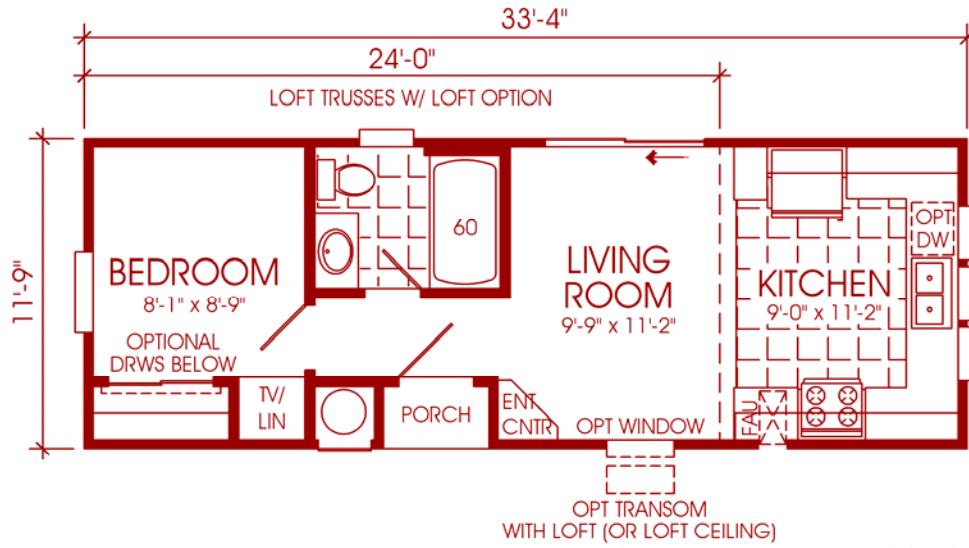
OPTIONAL BAY WINDOWS



OPTIONAL LOFT AREA

THIS LOFT PLAN DOES NOT MEET CALIFORNIA LOFT CODES

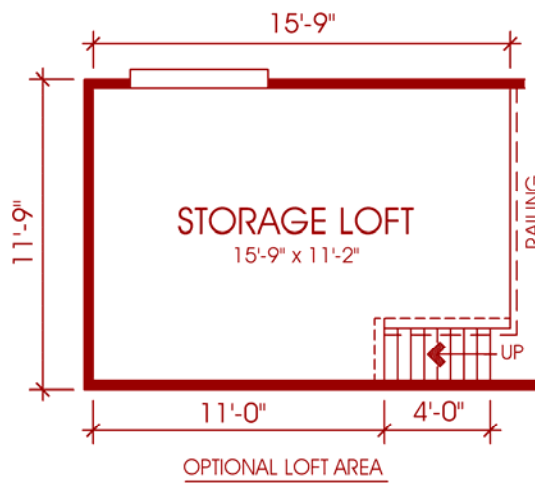




392 SQ. FT.

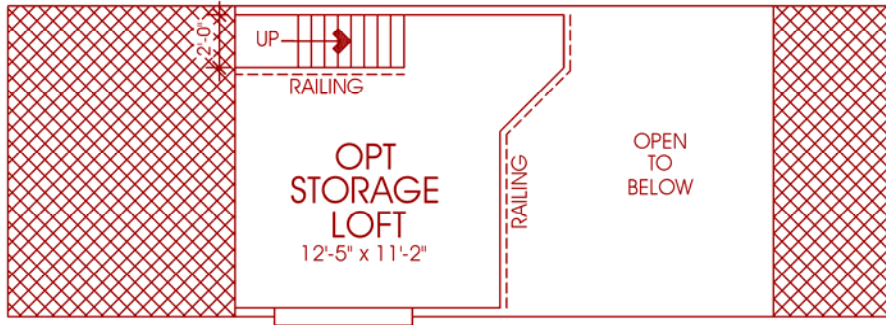
1BR, 1BA, LOFT

123739

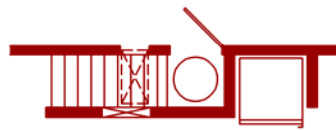


THIS LOFT PLAN DOES NOT MEET CALIFORNIA LOFT CODES





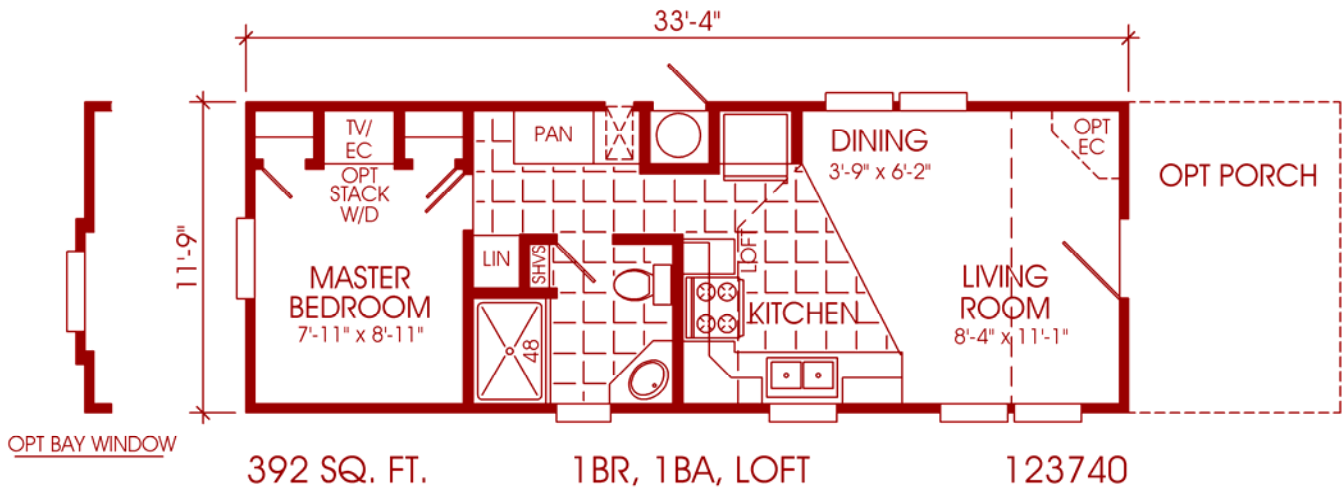
THIS LOFT PLAN DOES NOT MEET CALIFORNIA LOFT CODES



STAIRS FOR OPT LOFT



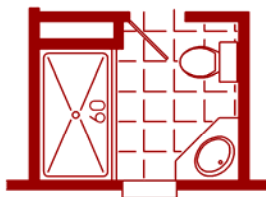
OPT BAY WINDOW



392 SQ. FT.

1BR, 1BA, LOFT

123740



OPT 60" SHOWER



STANDARD FEATURES for THE PHOENIX PARK (TE SERIES) / PHOENIX VILLA (TF SERIES)

EXTERIOR CONSTRUCTION FEATURES

- ♦ Double 4-1/2 Dutch Style Vinyl Lap Siding – Durable and Attractive
- ♦ Fome-Cor Backer Behind Vinyl Siding – Insulation & Vapor Barrier
- ♦ All Wood 2 X 6 Floor Joists 16" On Center – Provides a Solid Foundation
- ♦ Wood 2 X 4 Sidewall Studs 16" On Center – Solid Exterior Wall Construction
- ♦ 90" Sidewalls
- ♦ Detachable Hitch – Removable for the Finished Look
- ♦ Vinyl Thermopane Low E Windows – Efficient and Easy to Clean
- ♦ Sliding Patio Door – Attractive Yet Well Insulated
- ♦ Exterior Light at Each Door – Provides Light and Enhances Safety
- ♦ Exterior Electrical Receptacle – with a GFI for a Safe Exterior Electrical Supply

ROOF CONSTRUCTION FEATURES

- ♦ 3-Tab Self-Seal Shingles – Gives the Owner a Low Maintenance Home
- ♦ 6.9/12 Roof Pitch without Loft
- ♦ Eaves with Ventilated Soffits – Helps Protect Home from the Weather and Provides Ventilation
- ♦ Sturdy 24" On Center Rafters – Adds Strength and Durability

INTERIOR FEATURES

- ♦ Durable 16 oz. Acclaim Carpet with Pad in Living Areas – Adds Beauty to Your Decor
- ♦ Vinyl Floor Coverings in Kitchens and Baths – Name

- Brand Elegance and Durability
- ♦ Decorative Valance with Mini Blinds – Helps Regulate Natural Light with a Colorful Touch
- ♦ Sprayed Textured Cathedral Ceilings Throughout – Gives the Interior an Open Airy Appearance
- ♦ White Ruff Stuff Vinyl Covered Gypsum Wall Panels Throughout – Compliment Your Beautiful Decor and are Easy to Clean
- ♦ Glass Chandelier in the Dining Room - Touch of Elegance
- ♦ Vented Metal Shelving in Wardrobe – Durable yet Attractive
- ♦ Ceiling Cove Molding Throughout
- ♦ Bedroom Overhead Lights – Illumination at the Flick of a Switch
- ♦ Glass Light Fixtures Throughout to Brighten the Home's Interior
- ♦ White Embossed Passage Doors, with Metal Hardware, Heavy Duty Hinges and Wrapped Door Jambs – Adds Life to Your Home
- ♦ Wire & Brace for Ceiling Fan (Living Room)
- ♦ TV Cabinet with Jack & Power Supply as Shown

KITCHEN FEATURES

- ♦ 30" Gas Range with Power-Lighted Exhaust Hood – a Quality National Brand Range with Light Provided for the Cooking Surface
- ♦ 18 Cubic Foot Double Door Frost Free Whirlpool Refrigerator with Glass Shelves
- ♦ Raised Panel Cabinet Doors & Wrapped Face Frames

- with Residential Cabinet Construction & Cabinet Crown Molding – Beauty & Durability
- ♦ Finished Interior Kitchen Base Cabinets – Extra Storage with the Finished Look
- ♦ Deep Stainless Steel Sink
- ♦ 2" Backsplash in Kitchen & Baths
- ♦ Decorative Self -Edged Countertops – Sturdy Elegance with the Finished Look
- ♦ **(8" Single Handle Faucet with Pull-Out Spout in TF Series)**

BATH FEATURES

- ♦ 60" Tub in Bath as Shown
- ♦ Towel Bar & Paper Holder in Bath
- ♦ Raised Panel Cabinet Doors & Wrapped Face Frames – Beauty in the Bathrooms
- ♦ Decorative Self-Edged Countertops – Durability and Protection for Wall Surfaces
- ♦ Mirrors and Decorative Lights in all Baths – Adds Illumination and Elegance

ENERGY, SAFETY AND

OTHER QUALITY LIVING FEATURES

- ♦ R11 Insulation in the Roof & Exterior Walls
- ♦ R14 Insulation in Floors
- ♦ Electronic Ignition Gas Furnace
- ♦ Thirty Gallon Electric Water Heater
- ♦ Smoke Detectors in Living Areas
- ♦ 50 Amp Electrical Panel Box with All Copper Wiring & Power Cord
- ♦ Waterline Shut-Offs Throughout – Shut-Off Water to a Specific Application
- ♦ LP Detector

09 - std features Phoenix series.doc

Effective Date: 03/23/09
Rev 03/16/09

Model number includes the overall length of the home, including approximately 48" for the hitch. Some tires, wheels, axles, and other components may be reused after inspection. Floor width of model 12s is 141", 14s is 165", 16s is 186", 24s is 270", 28s is 318", 32s is 360", and 42s is 477" to allow for necessary road clearance. Interior dimensions are to the wall surface and based on 2x6 exterior walls. Square footage is based on overall outside floor dimension. All prices and specifications are subject to change without notice.

OR-TETF-09 Issued: 3/15/09 Revised 8/7/09

