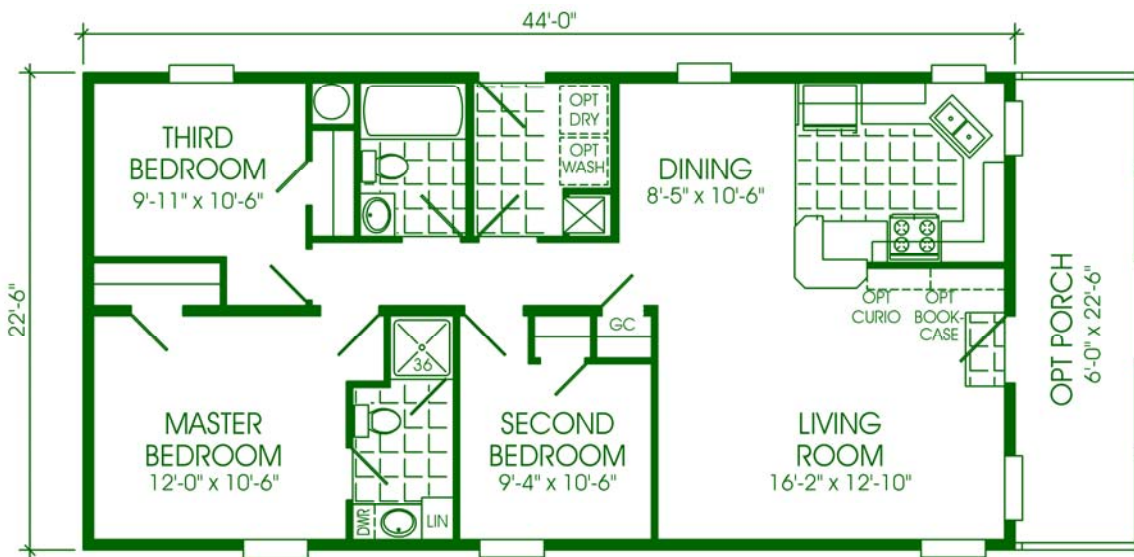


Advantage



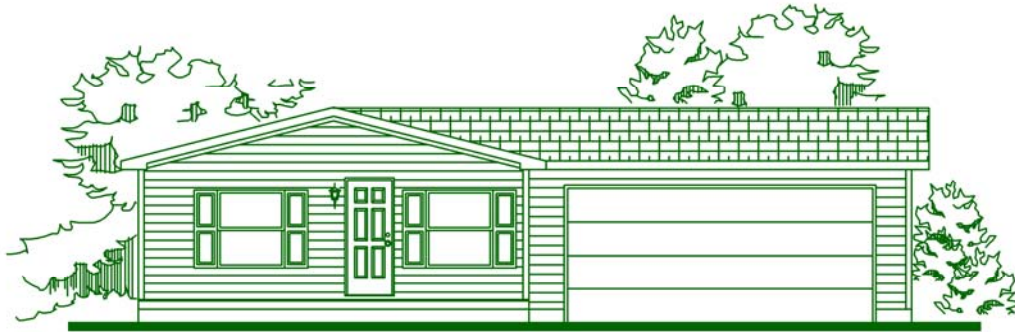
990 SQ. FT.

3BR, 2BA

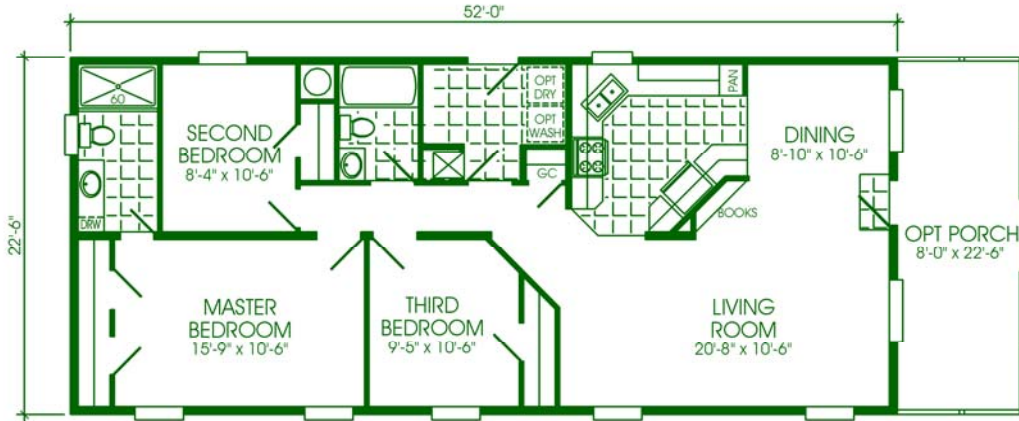
244829

OPTIONAL BASEMENT ENTRY
NOT AVAILABLE FOR 244829

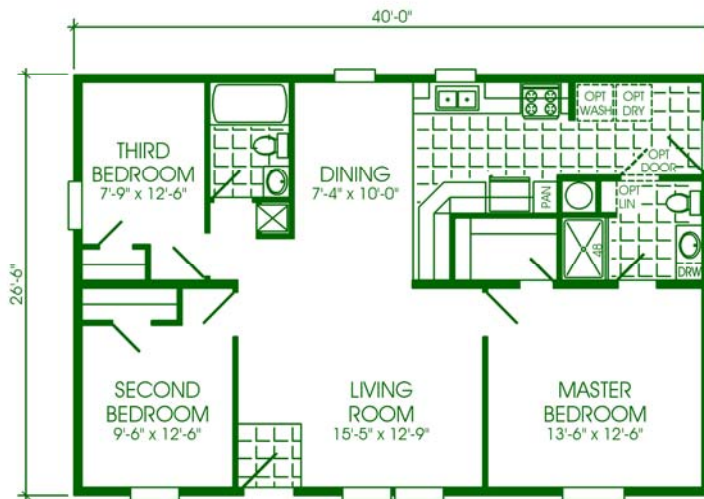




RIGHT ELEVATION WITH GARAGE BUILT BY OTHERS
Elevation may depict optional features built by others.

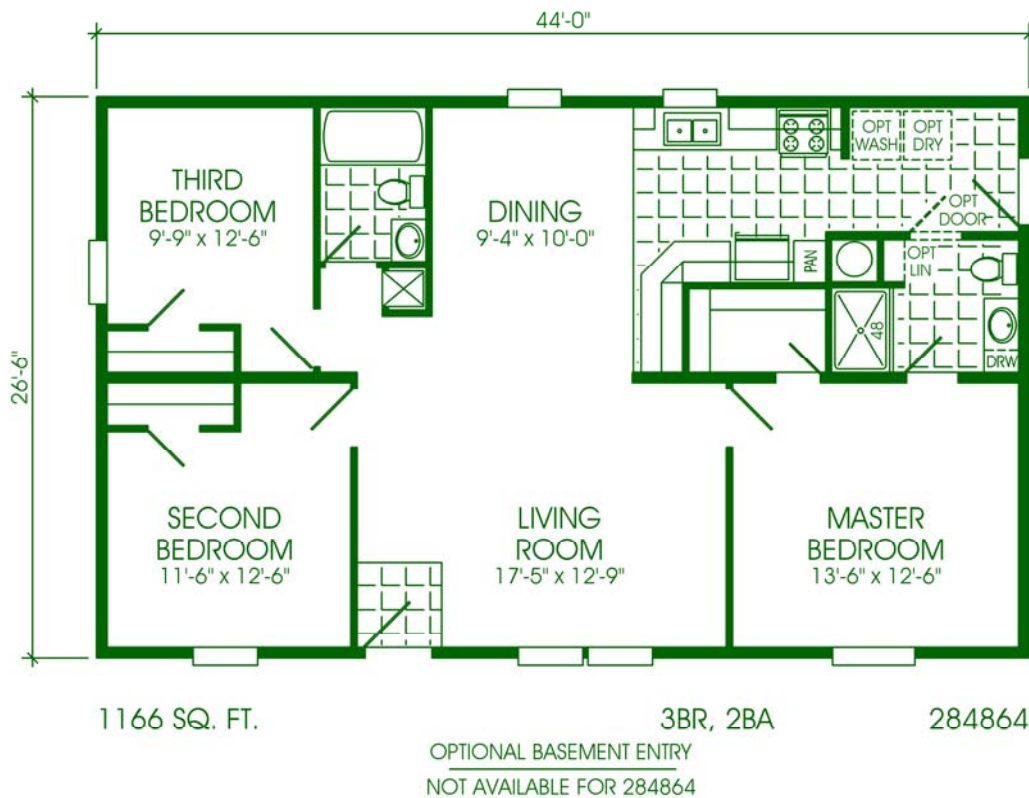


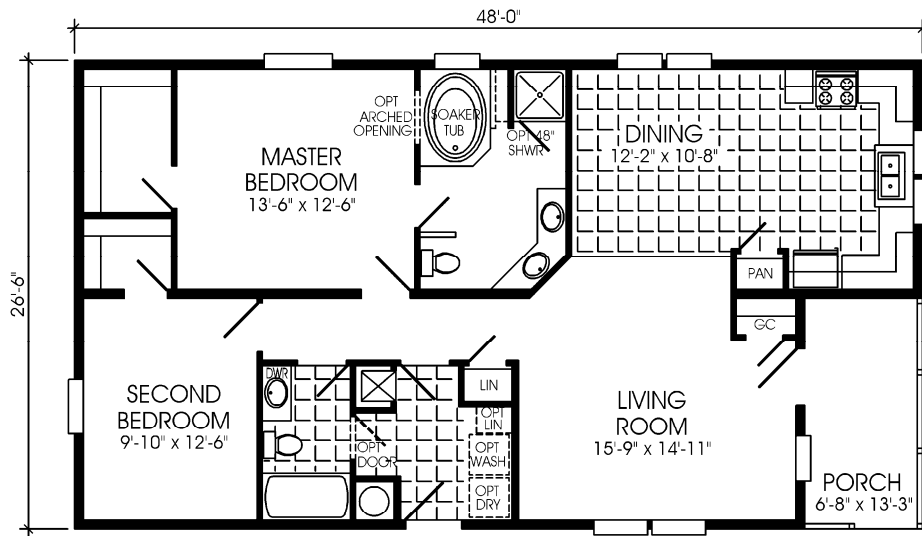
1170 SQ. FT. 3BR, 2BA 245699
OPTIONAL BASEMENT ENTRY
NOT AVAILABLE FOR 245699



1060 SQ. FT. 3BR, 2BA 284446
OPTIONAL BASEMENT ENTRY
NOT AVAILABLE FOR 284446





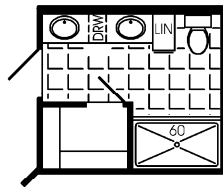


1272 SQ. FT.

2BR, 2BA, PORCH

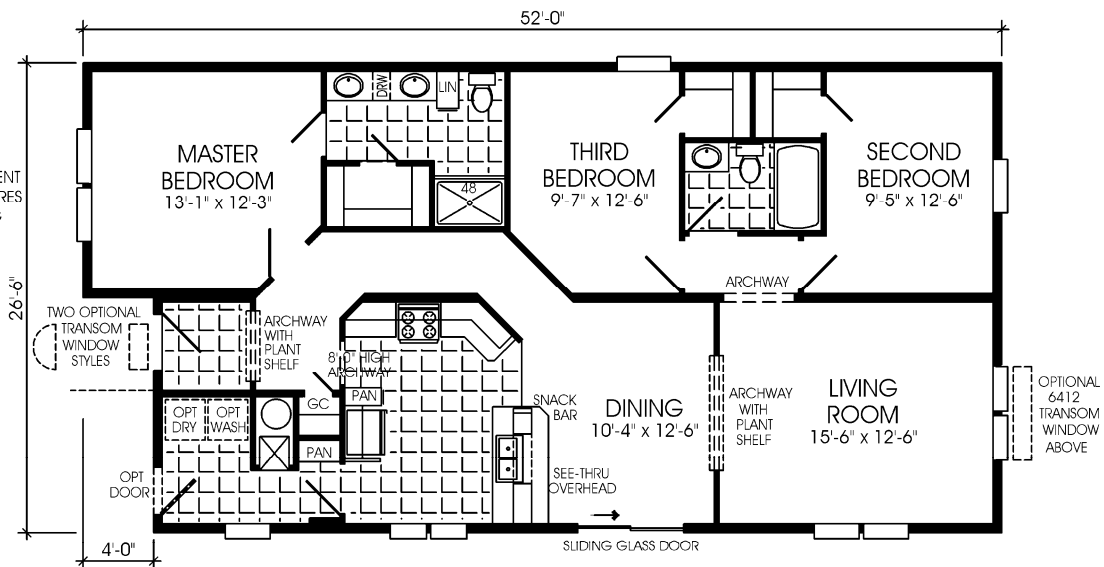
285260

OPTIONAL BASEMENT ENTRY
NOT AVAILABLE FOR 285260



OPT MASTER BATH W/60" SHOWER
285680

NOTE:
FRONT ACCENT
TRUSS REQUIRES
FLAT CEILING



1325 SQ. FT.

3BR, 2BA, PRIVATE MASTER BATH

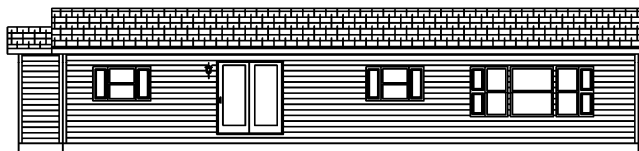
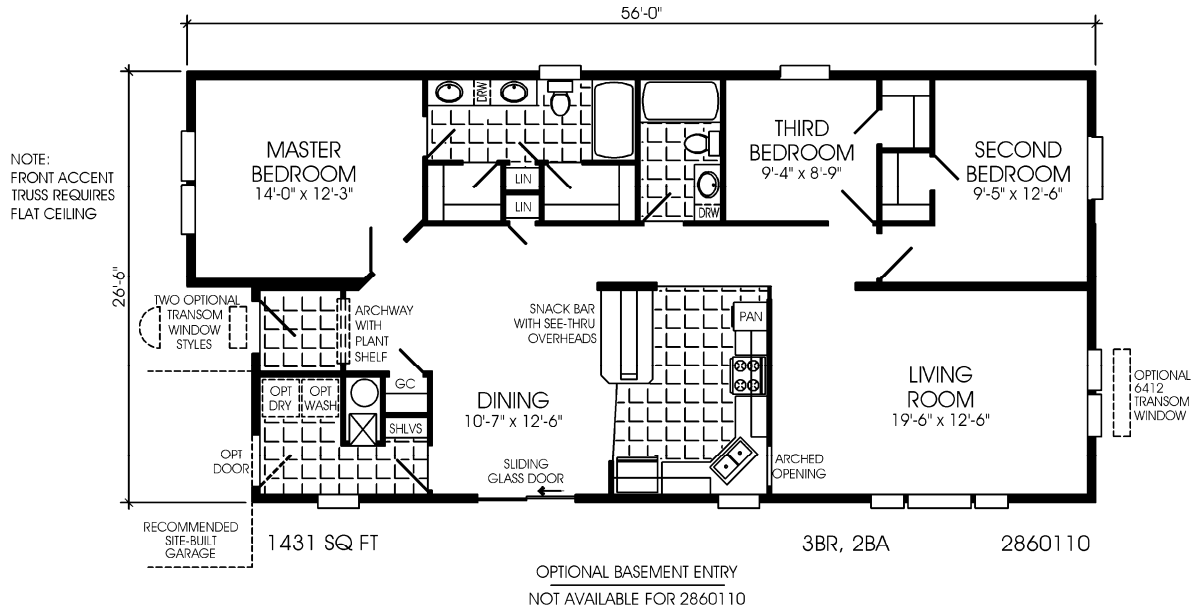
285680

OPTIONAL BASEMENT ENTRY
NOT AVAILABLE FOR 285680





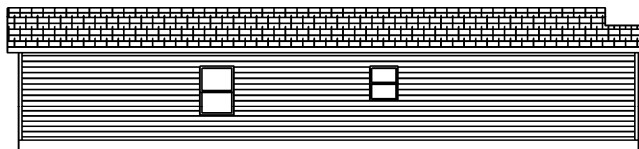
LEFT ELEVATION WITH GARAGE BUILT BY OTHERS
Elevation may depict optional features built by others.



FRONT ELEVATION



RIGHT ELEVATION

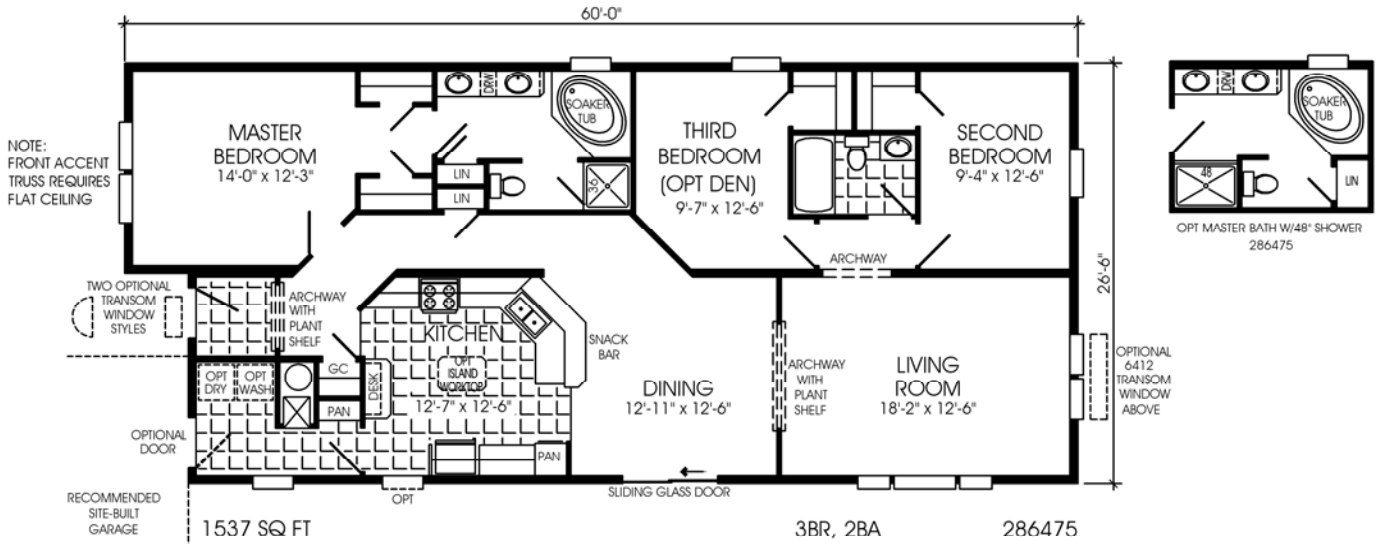


REAR ELEVATION

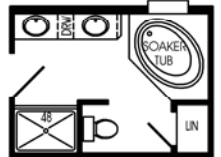




RIGHT ELEVATION WITH GARAGE BUILT BY OTHERS
Elevation may depict optional features built by others.



NOTE:
FRONT ACCENT
TRUSS REQUIRES
FLAT CEILING



OPT MASTER BATH W/48" SHOWER
286475



TWO OPTIONAL
TRANSOM
WINDOW
STYLES

OPTIONAL
DOOR

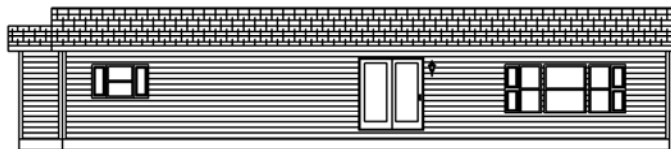
RECOMMENDED
SITE-BUILT
GARAGE

1537 SQ FT

3BR, 2BA

286475

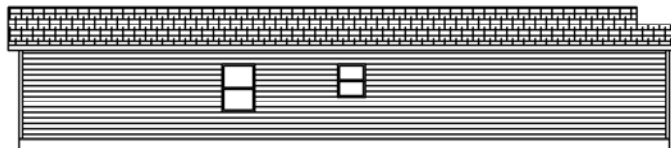
OPTIONAL BASEMENT ENTRY
NOT AVAILABLE FOR 286475



FRONT ELEVATION



RIGHT ELEVATION



REAR ELEVATION



STANDARD FEATURES for
ADVANTAGE (SC SERIES) / ADVANTAGE II (SD SERIES)

- Shingle Roof with Eaves
- **(Residential Dormer Standard in SD Series)**
- 30 lb. Roof
- R22 Ceiling Insulation
- Vinyl Siding with Fome-Cor Backer
- 2 X 6 Sidewalls With R19 Insulation
- 90" Sidewalls
- 16" OC Interior Walls
- 2 X 6 Floor Joists
- R18 Floor Insulation
- Stainless Steel Sink with Single-Lever Faucet
- Thermodynamically Engineered Electric Furnace
- Whole House Ventilation System
- 30" Electric Range with Power Hood
- 40 Gallon Electric Water Heater
- 18 CF 2 Door Frost Free Refrigerator with Glass Shelves
- Decorative Self-Edged Countertops
- Mini Blinds with Valances Throughout
- Acclaim Carpet with 1/2" Rebond Pad in Living Room, Hall, Bedrooms & Dining Room (as shown)
- Vinyl Floor Covering in Kitchen, Utility Room & Baths
- Vinyl Entry Foyer
- Egress Windows in Bedrooms
- Low E Energy Efficient Vinyl Windows
- Smoke Detectors
- Exterior Receptacle with GFI
- Copper Wiring
- All Electric 200 Amp
- Tape & Textured Cathedral Ceiling Throughout
- Tape & Textured Walls & Closets Throughout
- Tape & Textured Wall/Ceiling Joints Throughout
- Base Molding Installed
- Bath Vent Fans
- Concealed LVL Beam
- 6-Panel Steel House-Type Exterior Doors
- Light at Each Exterior Door
- Residential Cabinet Construction with Raised Panel Doors with Hidden Hinges
- Cabinet Over Refrigerator
- Strip Lights Over Beveled Mirrors in Baths
- White Interiors in Cabinets, Pantry & Linen
- Backsplash in Kitchen & Baths
- Adjustable Shelves in Kitchen
- Wrapped Particle Board Shelf with Dowel Rod in All Closets
- Center Shelves in Kitchen Base Cabinets
- Satin Lever Metal Passage Door Knobs
- China Lav Sink
- Water Saver Toilets
- Towel Bar & Paper Holder in Baths
- Brass Plumbing Fittings
- Toe Kick Heat Registers in Kitchen & Baths
- Whole House Water Shut Off
- Water Shut-Off Valves Throughout
- Plumb for Washer
- Wire for Dryer
- Ventilated Roof

09 - std features Advantage (SC & SD) series.doc

Effective Date: 03/23/09
Rev 03/18/09

Model number includes the overall length of the home, including approximately 48" for the hitch. Some tires, wheels, axles, and other components may be reused after inspection. Floor width of model 12s is 141", 14s is 165", 16s is 186", 24s is 270", 28s is 318", 32s is 360", and 42s is 477" to allow for necessary road clearance. Interior dimensions are to the wall surface and based on 2x6 exterior walls. Square footage is based on overall outside floor dimension. All prices and specifications are subject to change without notice.

OR-SCSD-09 Issued 3/15/09 Revised 8/7/09

