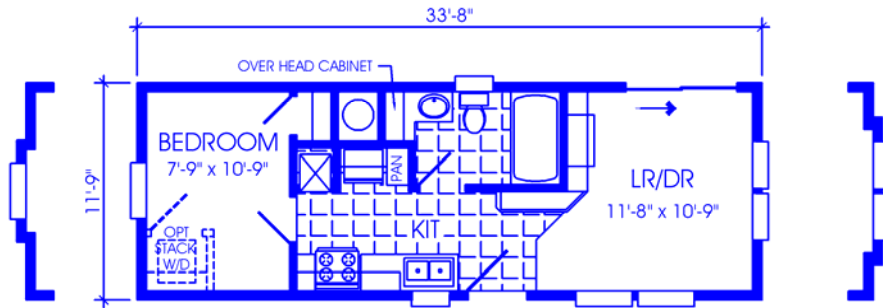
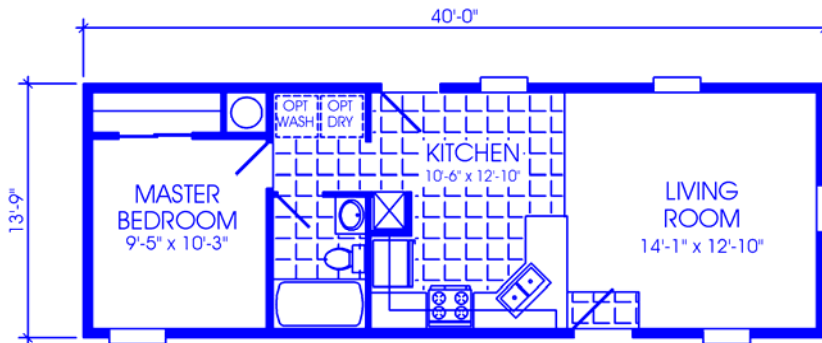


# ANNIVERSARY

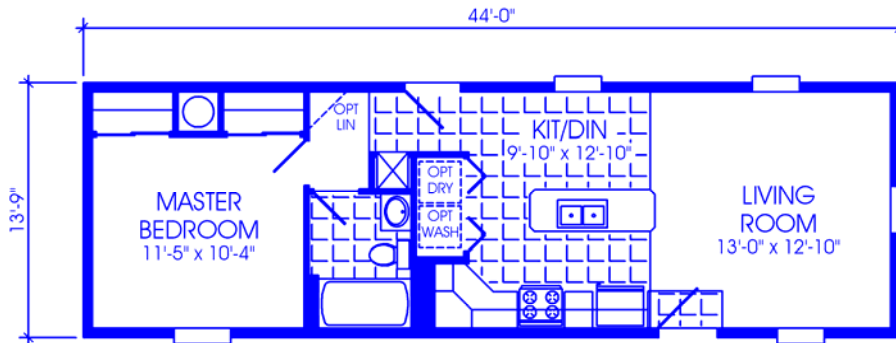
## SERIES



396 SQ. FT. 1BR, 1BA, FRONT LIVING 123741

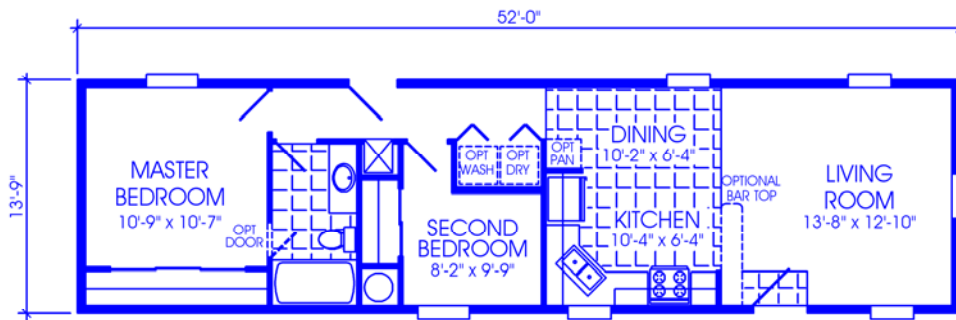


550 SQ. FT. 1BR, 1BA, FRONT LIVING 144403

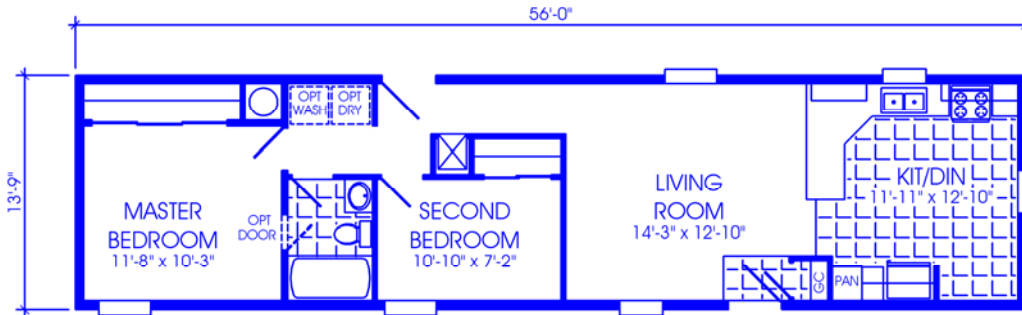


605 SQ. FT. 1BR, 1BA, ISLAND KITCHEN 144821

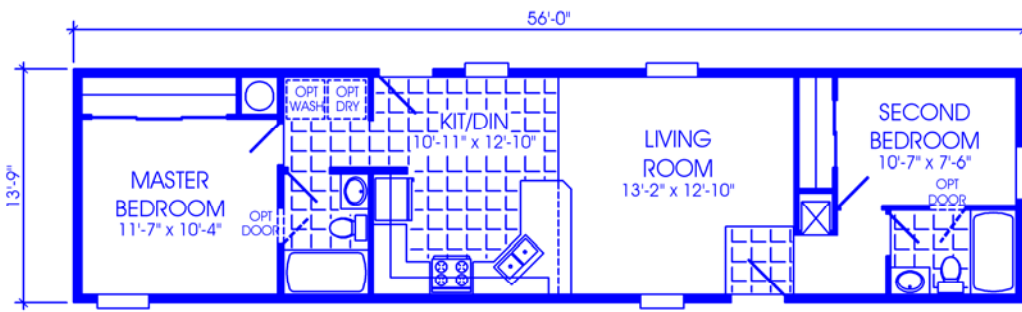




715 SQ. FT. 2BR, 1BA, FRONT LIVING ROOM 145621



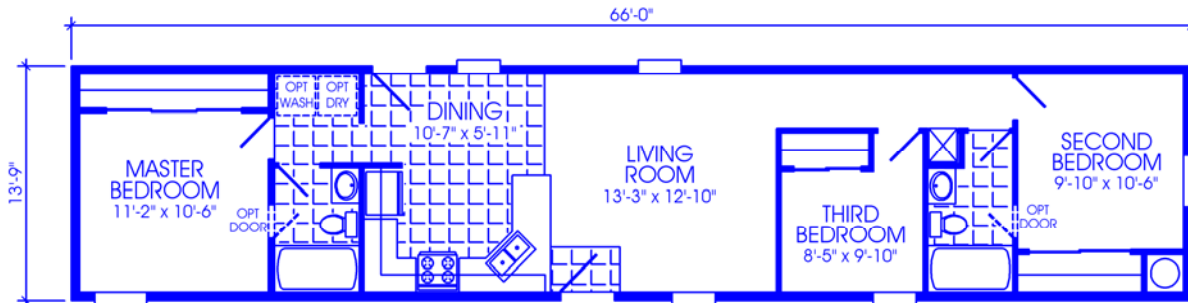
770 SQ. FT. 2BR, 1BA, FRONT KITCHEN 146020



770 SQ. FT. 2BR, 2BA, FRONT CORNER BATH 146065

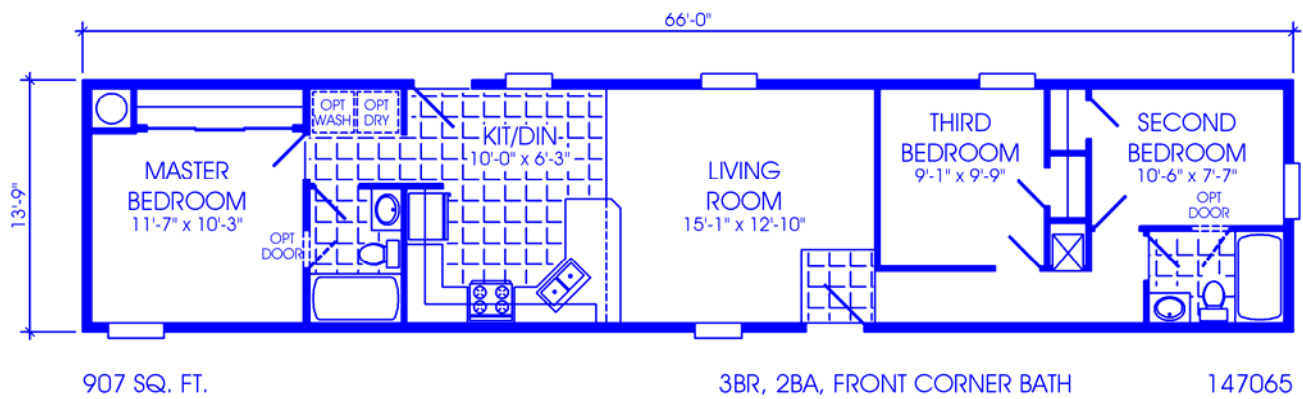
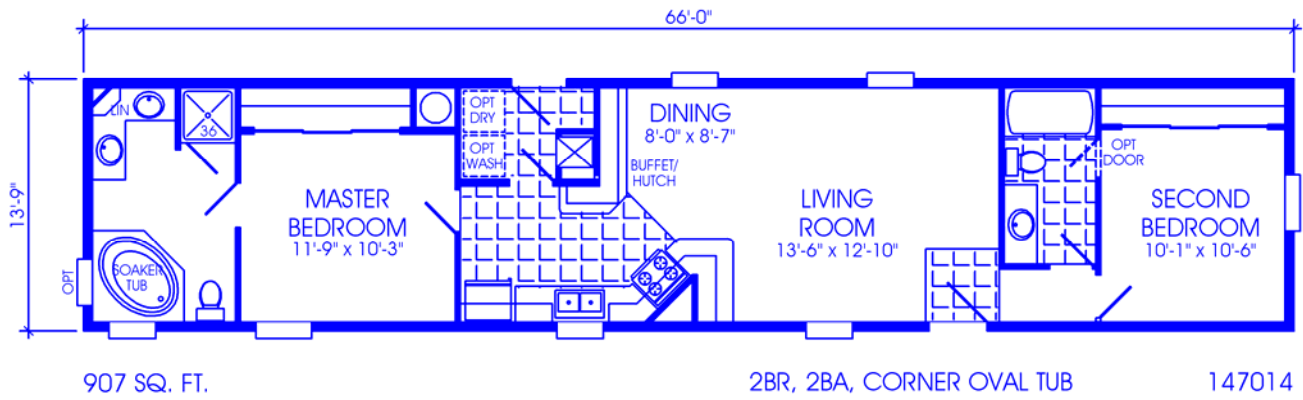


OPTIONAL BATH FOR 146065

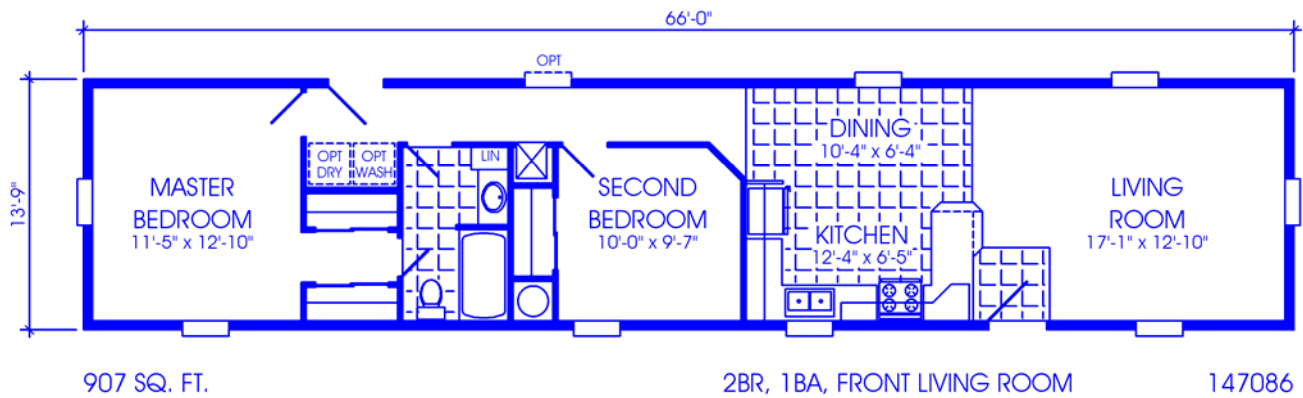


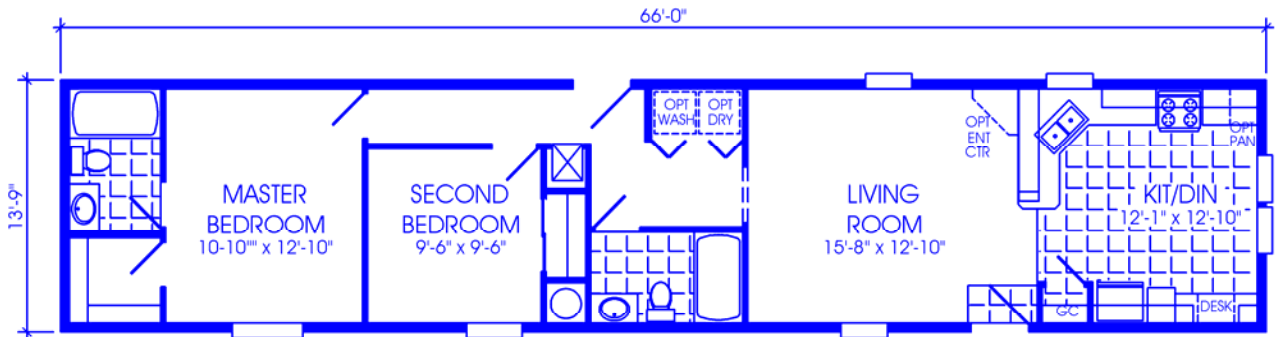
907 SQ. FT. 3BR, 2BA, TWO FRONT BEDROOMS 147011





OPTIONAL BATH  
FOR 147065

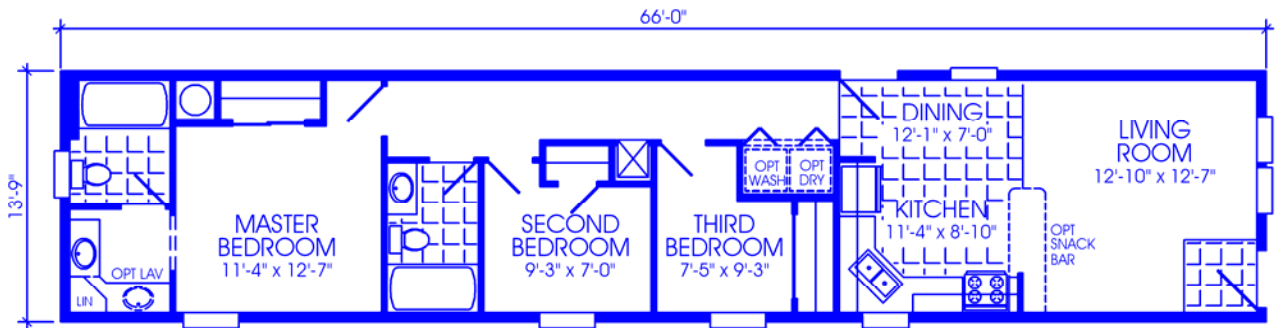




907 SQ. FT.

2BR, 2BA, FRONT KITCHEN

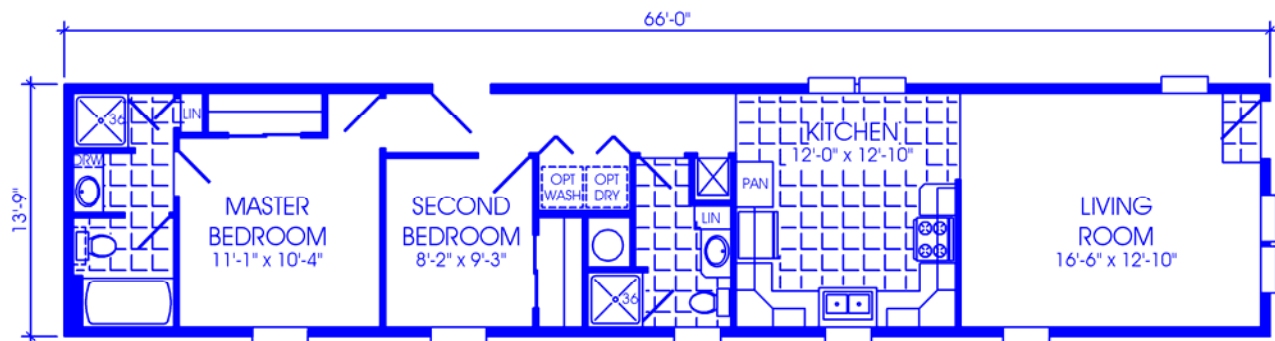
147090



907 SQ. FT.

3BR, 2BA, FRONT LIVING ROOM

147094



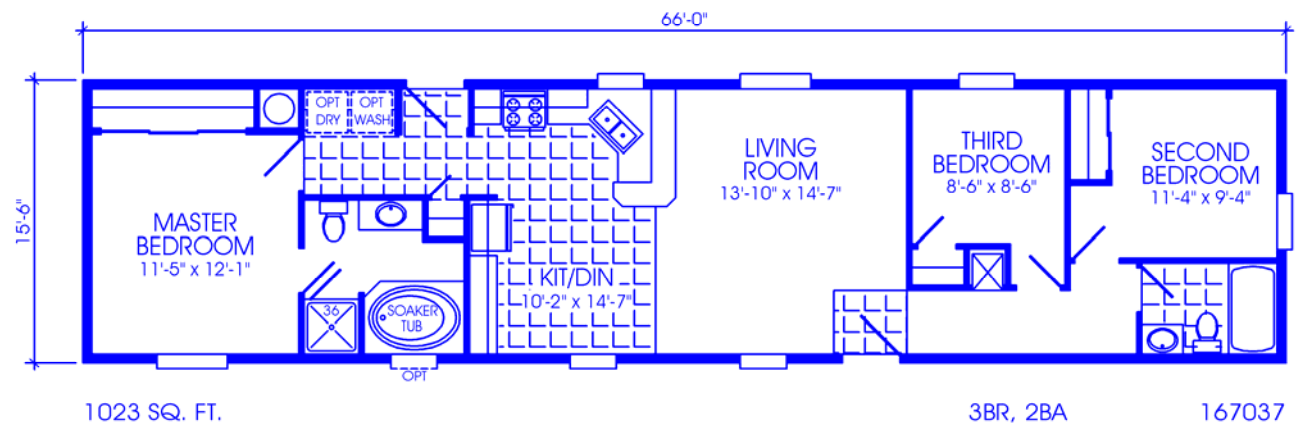
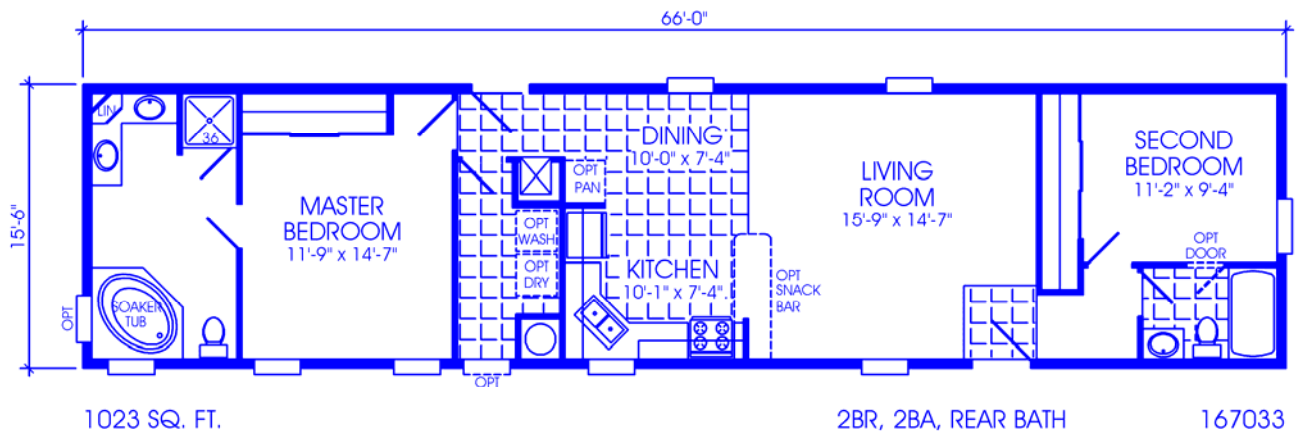
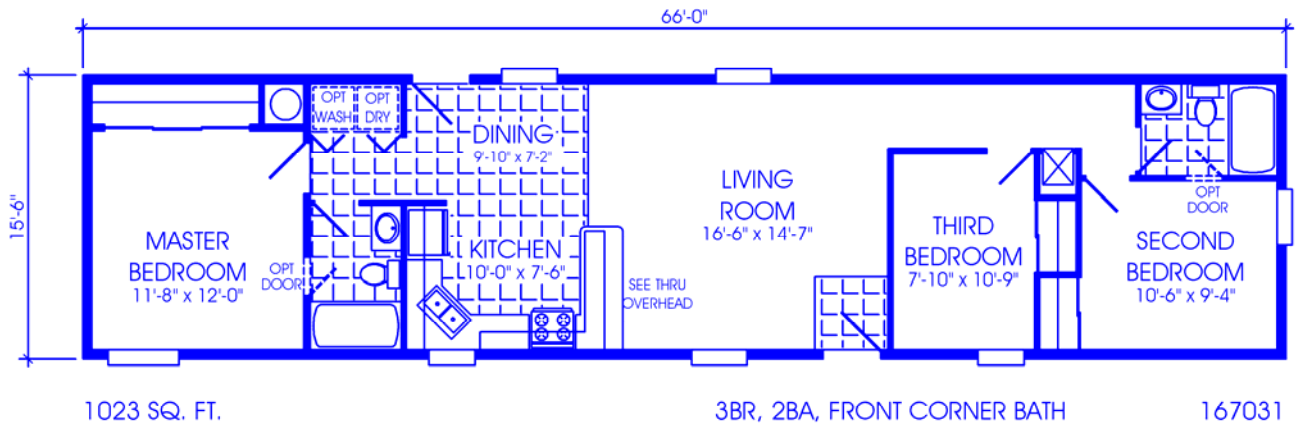
907 SQ. FT.

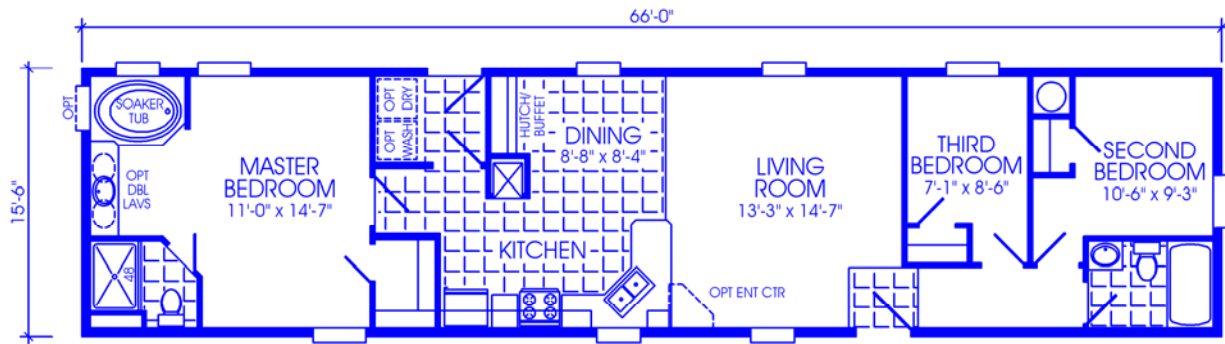
2BR, 2BA, FRONT LIVING ROOM

147096





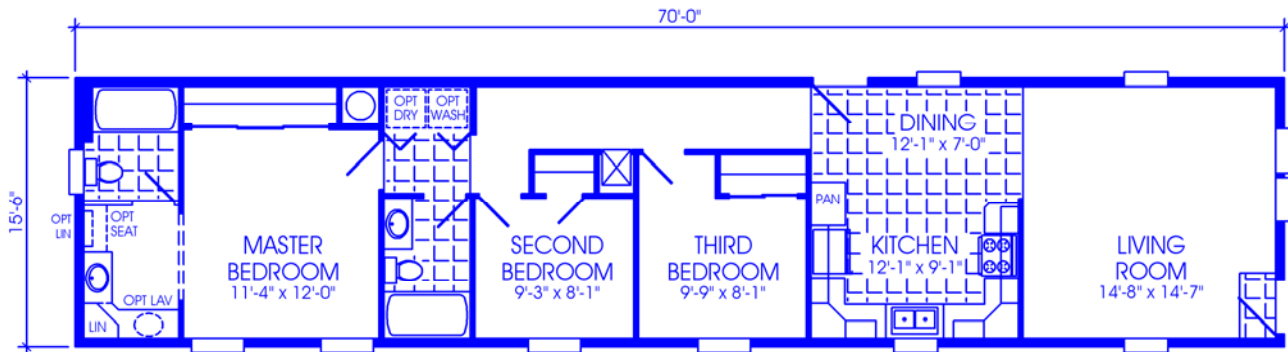




1023 SQ. FT.

3BR, 2BA, LUXURY BATH

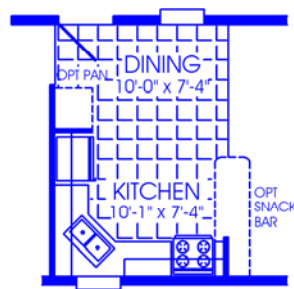
167041



1085 SQ. FT.

3BR, 2BA, FRONT LIVING ROOM

167401



OPTIONAL KITCHEN  
FOR 167401



## STANDARD FEATURES

### for ANNIVERSARY (RR SERIES) / ANNIVERSARY II (RS SERIES)

- Shingle Roof
- 30 lb. Roof
- **(Residential Dormer Standard in RS Series)**
- R22 Ceiling Insulation
- Vinyl Siding with Fome-Cor Backer
- 2 X 6 Sidewalls With R19 Insulation
- 2 X 6 Floor Joists
- R18 Floor Insulation
- 90" Sidewalls
- Stainless Steel Sink
- Thermodynamically Engineered Electric Furnace
- Whole House Ventilation System
- 30" Electric Range with Power Hood
- 30 Gallon Electric Water Heater
- 18 CF 2 Door Frost Free Refrigerator with Glass Shelves
- Decorative Self-Edged Countertops
- Mini Blinds with Valances Throughout
- Acclaim Carpet with Pad in Living Room, Hall & Bedrooms
- Vinyl Entry Foyer
- Vinyl Floor Covering in Kitchen & Baths
- Egress Windows in Bedrooms
- Low E Energy Efficient Vinyl Windows
- Smoke Detectors
- Exterior Receptacle with GFI
- Copper Wiring
- All Electric 200 Amp
- Tape & Textured Cathedral Ceiling Throughout
- Tape & Textured Walls in All Dry Areas
- Tape & Textured Wall/Ceiling Joints in All Dry Areas
- Ruff Stuff Vinyl Covered Gypsum Wall Panels in Wet Areas
- Bath Vent Fans
- 6-Panel Steel House-Type Exterior Doors
- Light at Each Exterior Door
- Bath Linen Cabinet as Shown
- Residential Cabinet Construction with Plaque Doors
- Cabinet Over Refrigerator
- Strip Lights Over Beveled Mirrors in Baths
- Towel Bar & Paper Holder in Baths
- White Interiors in Cabinets, Pantry & Linen
- Center Shelves in Kitchen Base Cabinets
- Backsplash in Kitchen & Baths
- Snack Bar as Shown
- Lever Metal Passage Door Knobs
- China Lav Sink
- Water Saver Toilets
- Brass Plumbing Fittings
- Water Shut-Off Valves Throughout
- Plumb for Washer
- Wire for Dryer
- Power Attic Vents

09 - std features Anniversary SW (RR & RS) series.doc

Effective Date: 03/23/09  
Rev 03/20/09

Model number includes the overall length of the home, including approximately 48" for the hitch. Some tires, wheels, axles, and other components may be reused after inspection. Floor width of model 12s is 141", 14s is 165", 16s is 186", 24s is 270", 28s is 318", 32s is 360", and 42s is 477" to allow for necessary road clearance. Interior dimensions are to the wall surface and based on 2x6 exterior walls. Square footage is based on overall outside floor dimension. All prices and specifications are subject to change without notice.

OR-RRRS-09 Issued: 3/15/09 Revised 8/7/09

