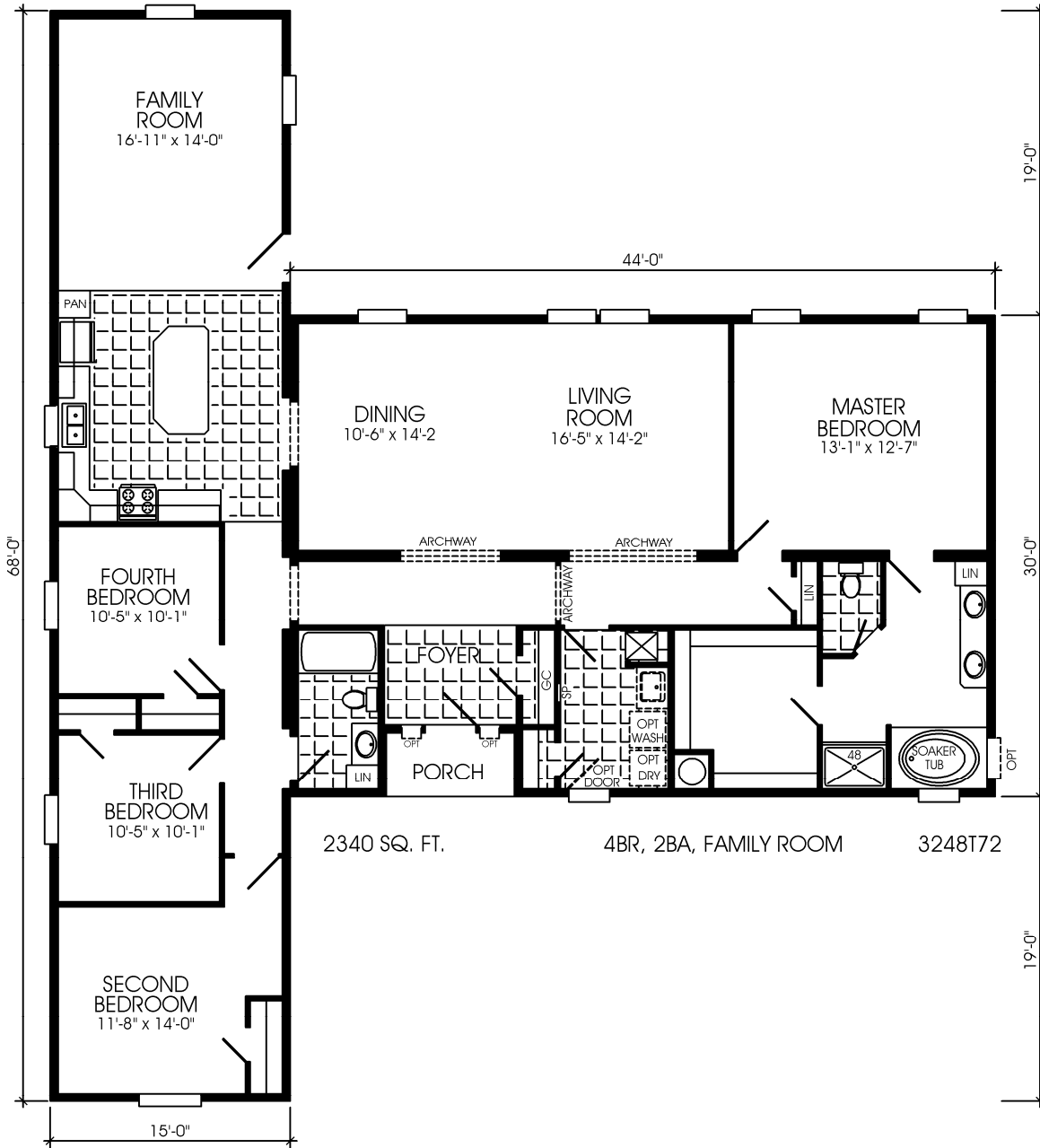


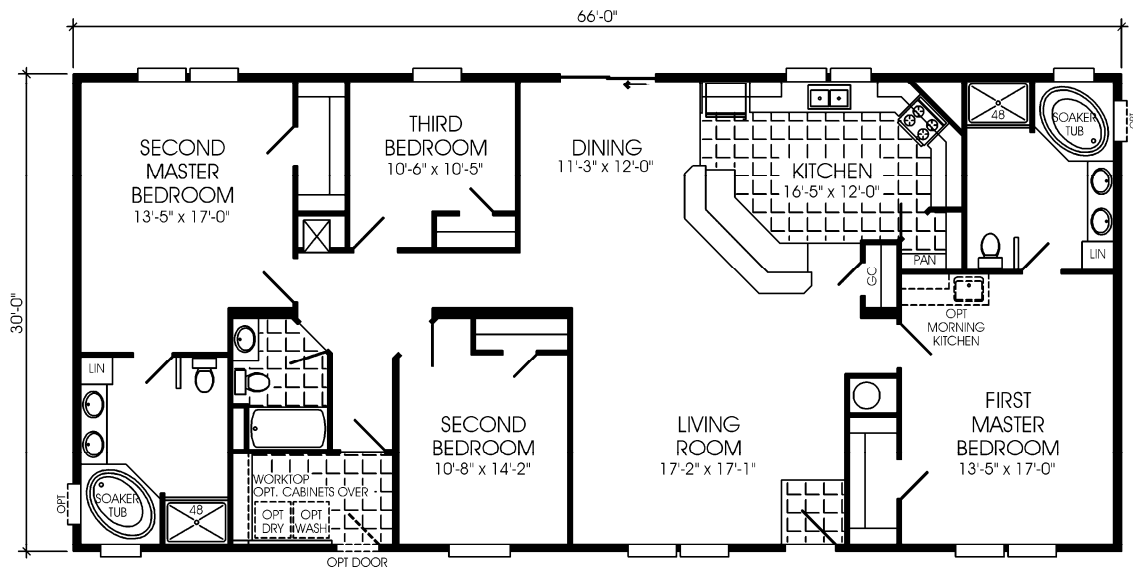
ANNIVERSARY

SERIES

32 AND 42 MULTI-SECTION MODELS



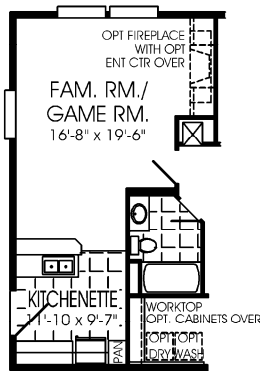




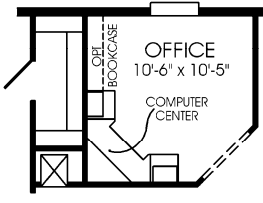
1980 SQ. FT.

4BR, 3BA, DOUBLE MASTER SUITE

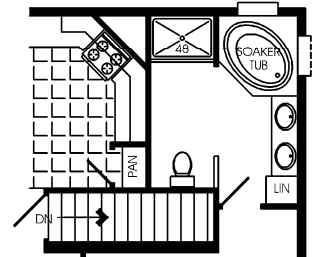
327006



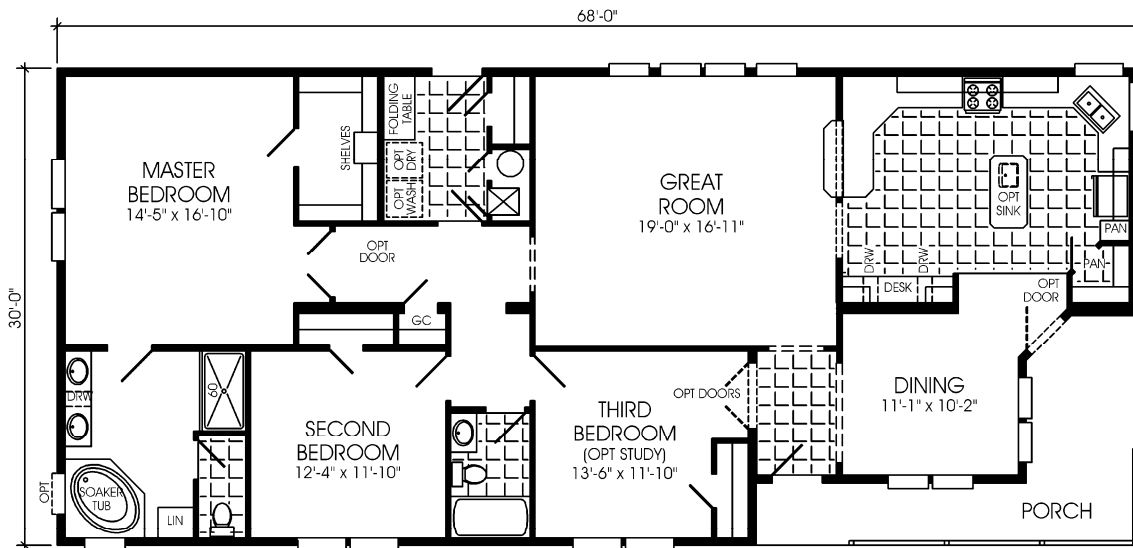
OPTIONAL GAME ROOM
FOR 327006



OPTIONAL HOME OFFICE
FOR 327006



OPTIONAL BASEMENT ENTRY
FOR 327006

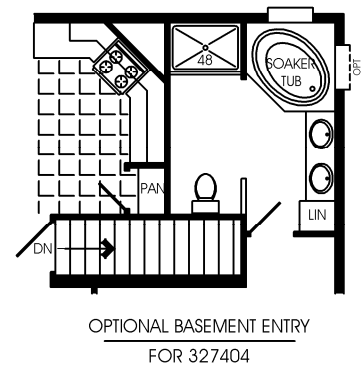
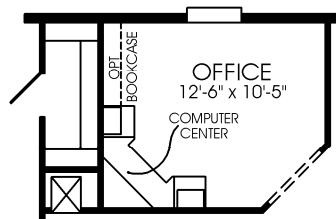
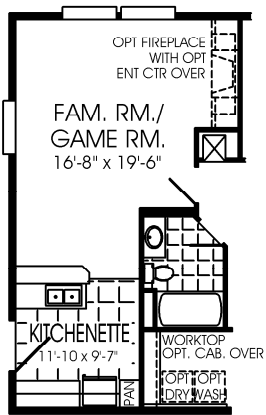
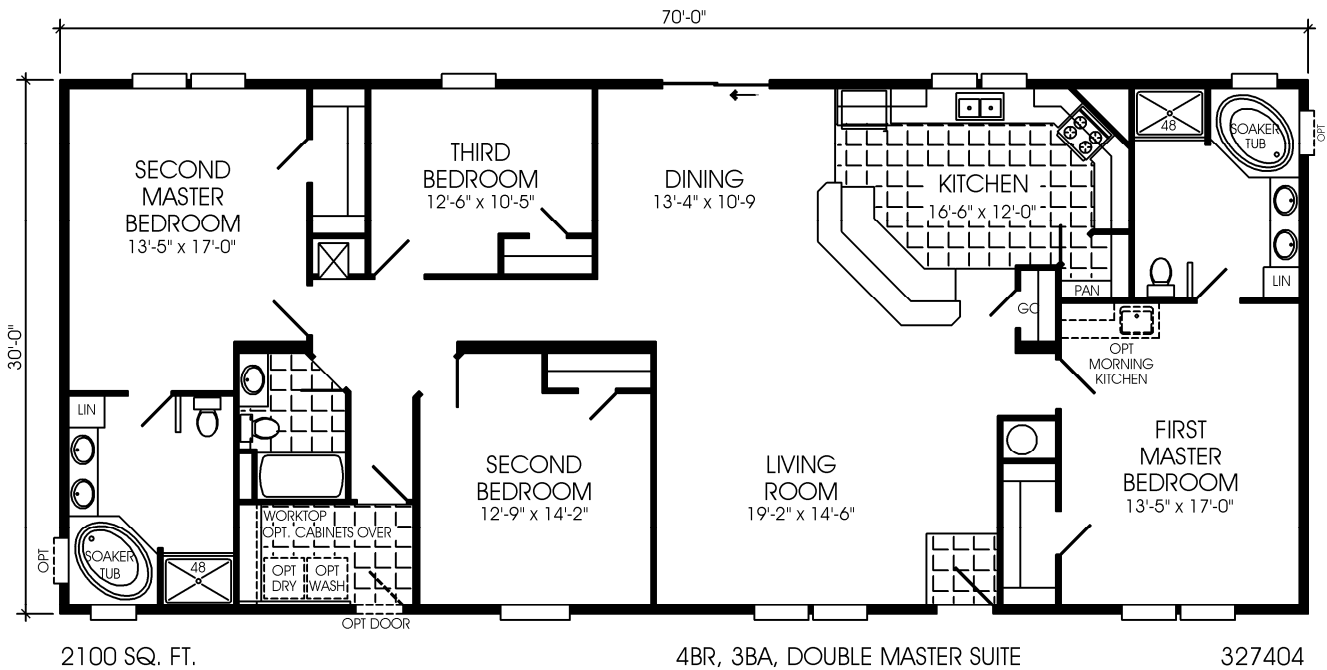


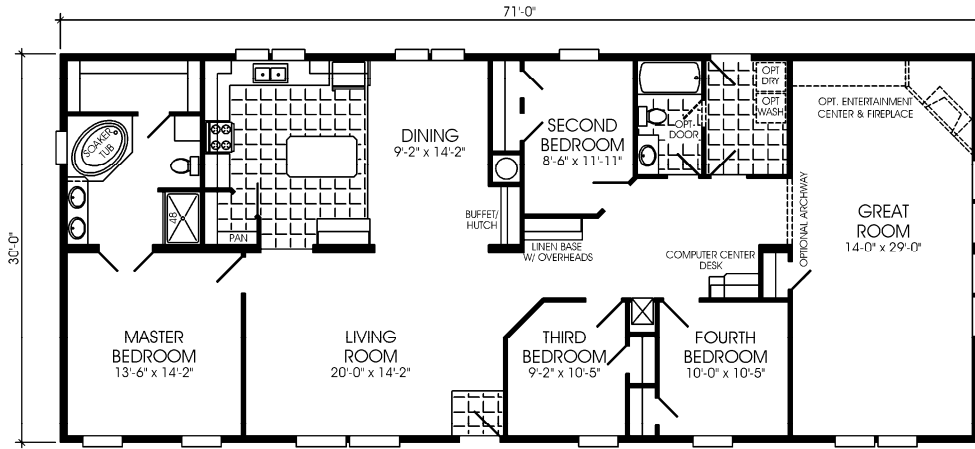
1874 SQ. FT.

3BR, 2BA, GREAT ROOM, PORCH

327214





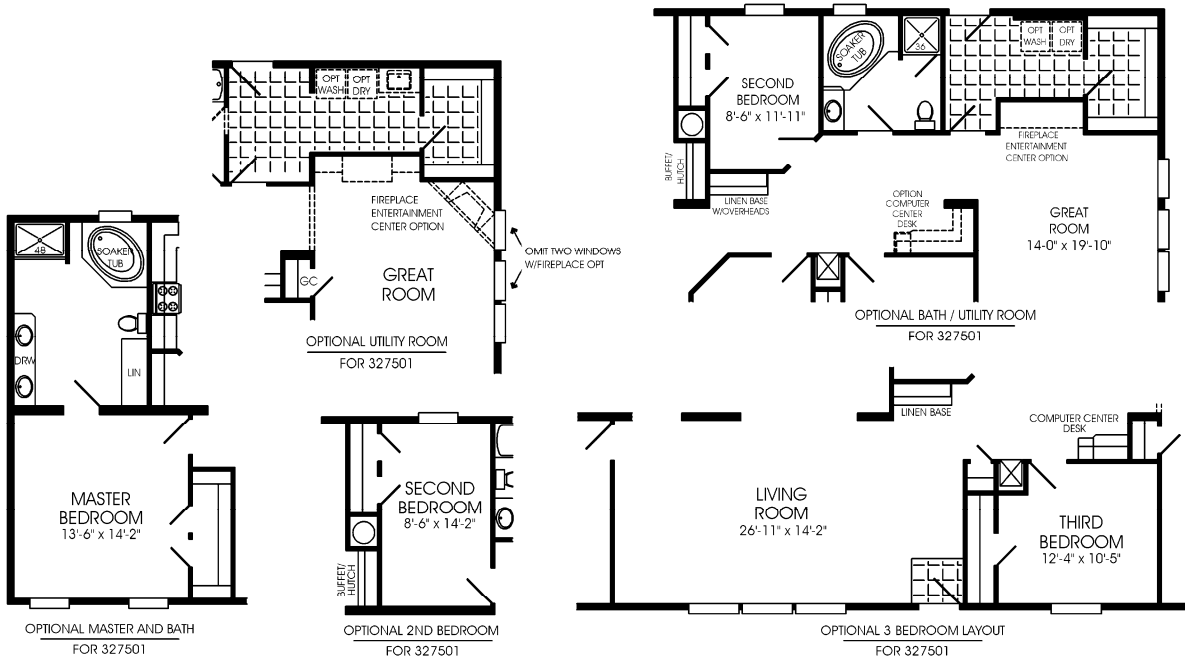


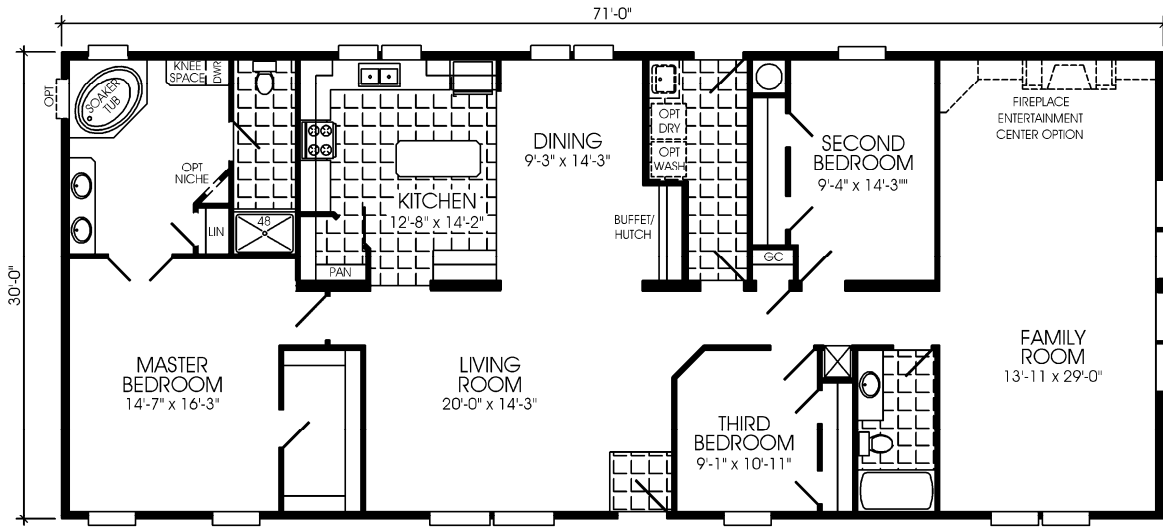
2130 SQ. FT.

OPTIONAL BASEMENT STAIRS
NOT AVAILABLE FOR 327501

4BR, 2BA

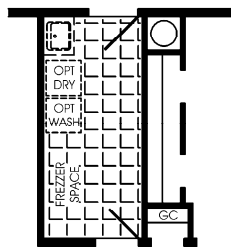
327501





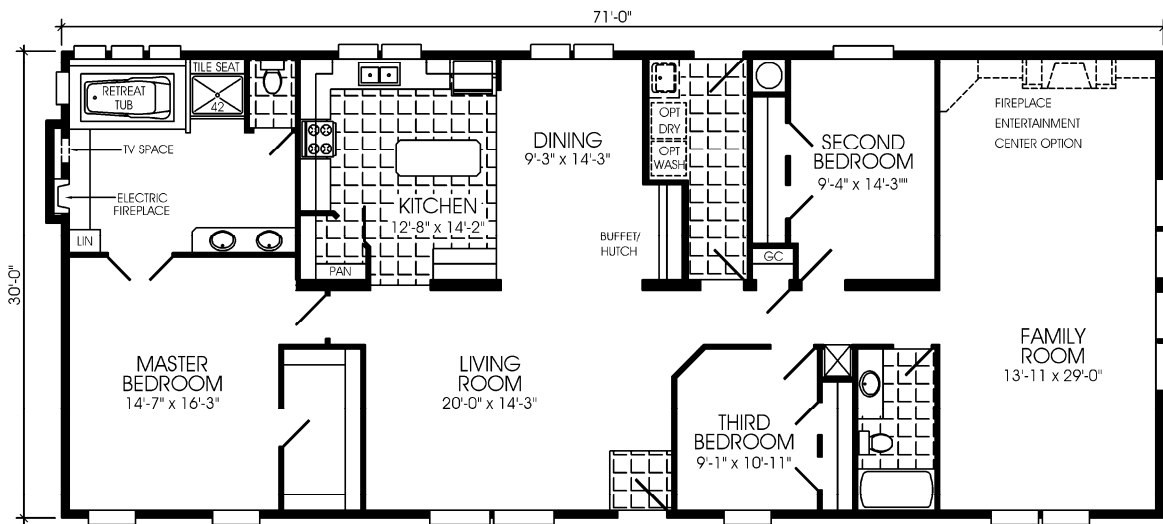
2130 SQ. FT.

3BR, FAMILY ROOM, LUXURY BATH 327502



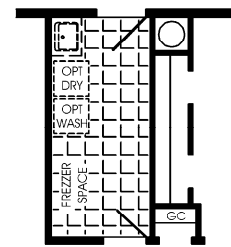
OPTIONAL BASEMENT ENTRY
NOT AVAILABLE FOR 327502

OPTIONAL UTILITY
FOR 327503



2130 SQ. FT.

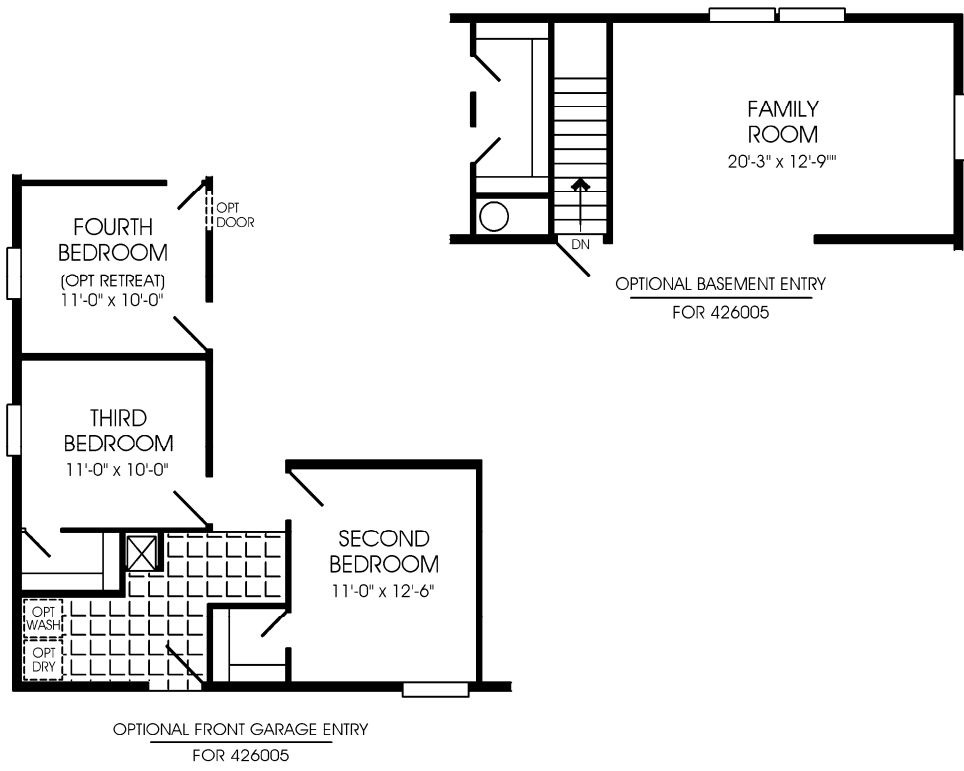
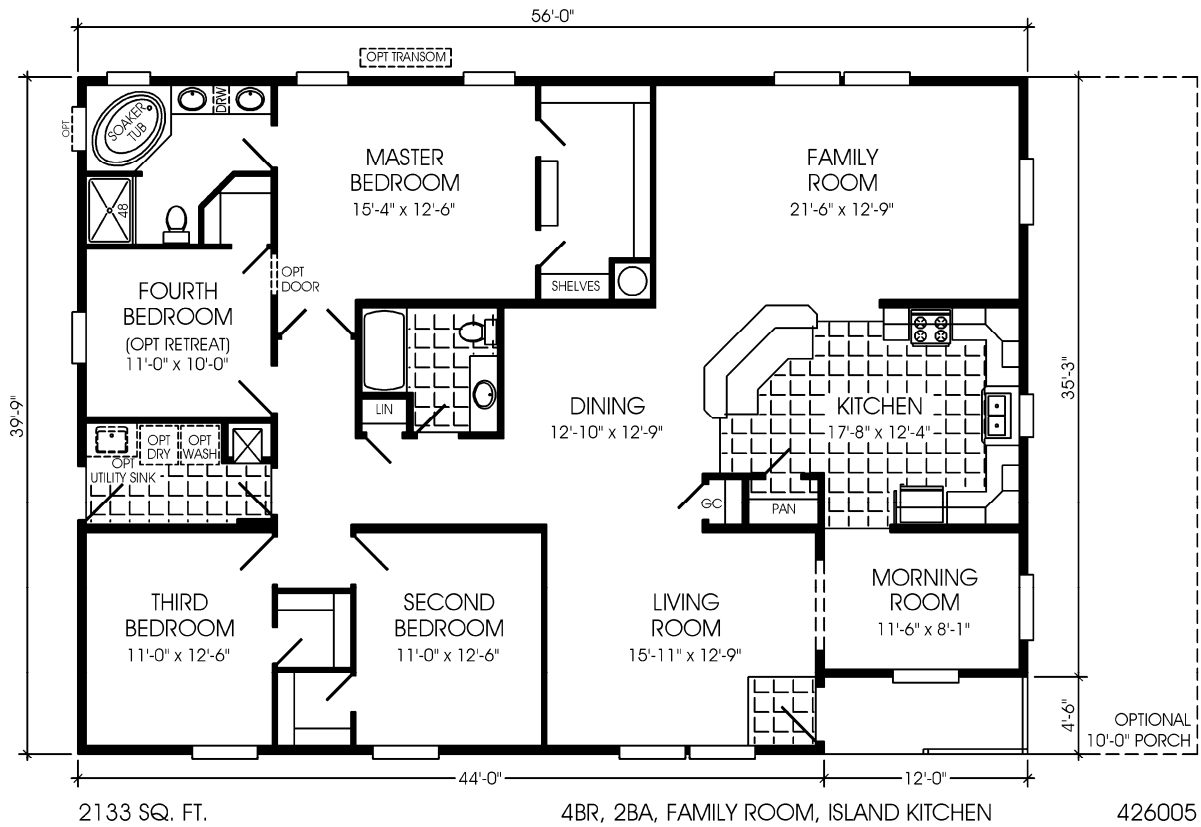
3BR, FAMILY ROOM, RETREAT BATH 327503

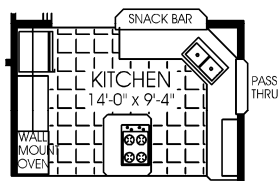
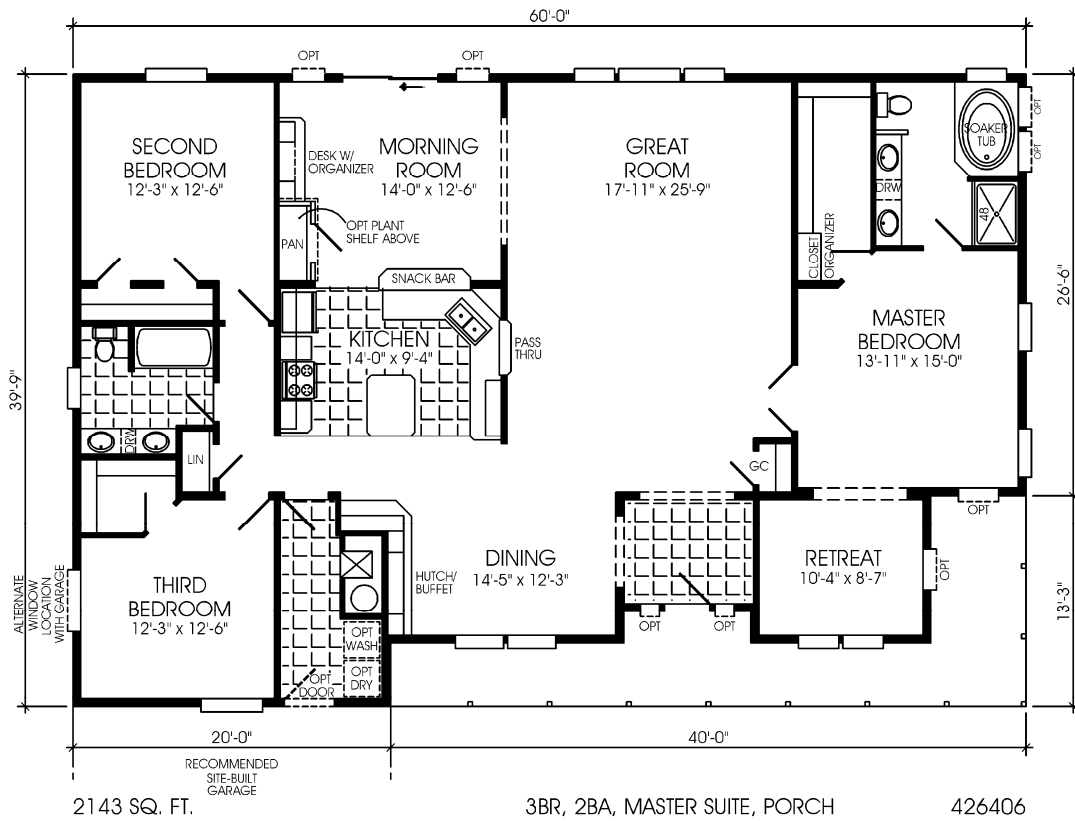


OPTIONAL BASEMENT ENTRY
NOT AVAILABLE FOR 327503

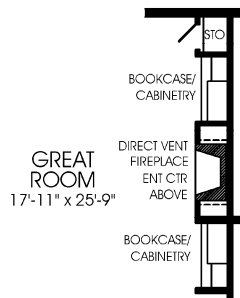
OPTIONAL UTILITY
FOR 327503



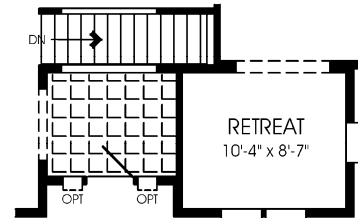




OPTIONAL KITCHEN
FOR 426406

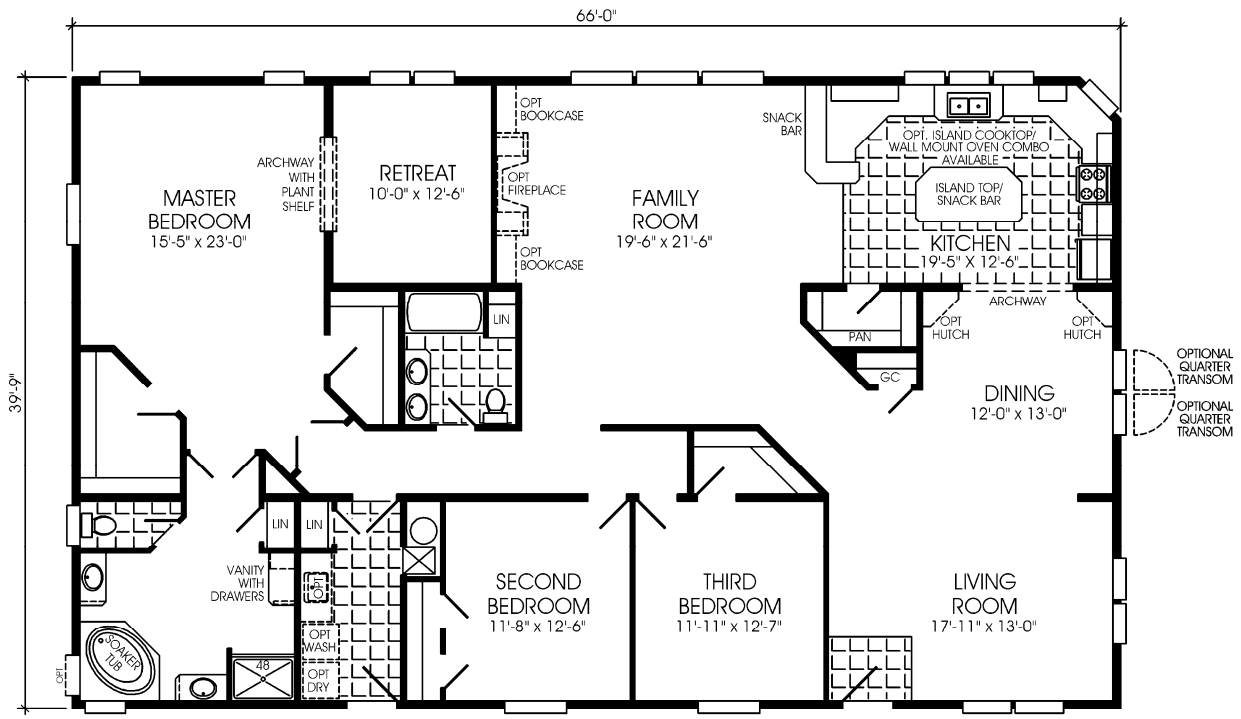


OPTIONAL CABINETRY/FIREPLACE
FOR 426406



OPTIONAL BASEMENT ENTRY
FOR 426406

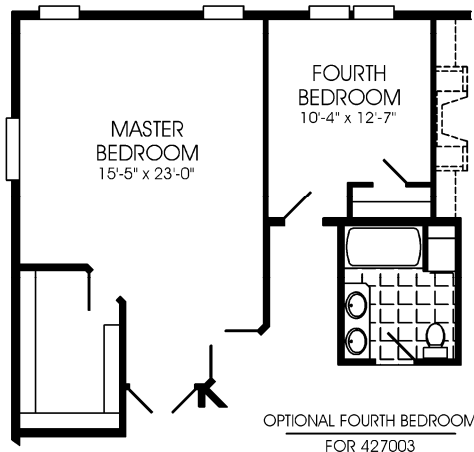




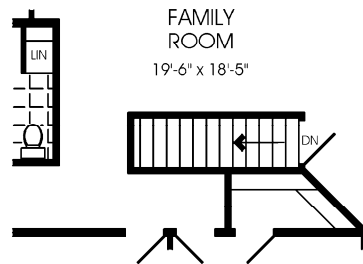
2620 SQ. FT.

3BR, 2BA, FAMILY ROOM, MASTER SUITE

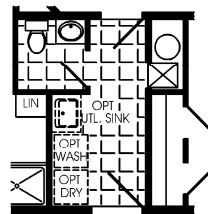
427003



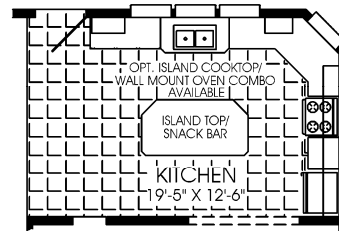
OPTIONAL FOURTH BEDROOM
FOR 427003



OPTIONAL BASEMENT ENTRY
FOR 427003

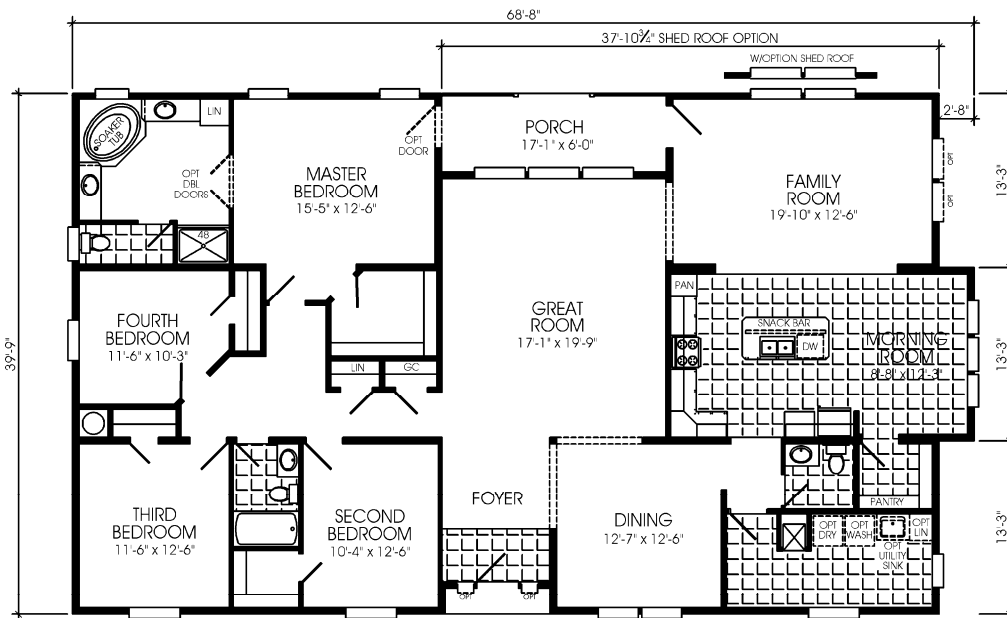


OPTIONAL HALF BATH
FOR 427003



OPTIONAL REAR ENTRY
FOR 427003

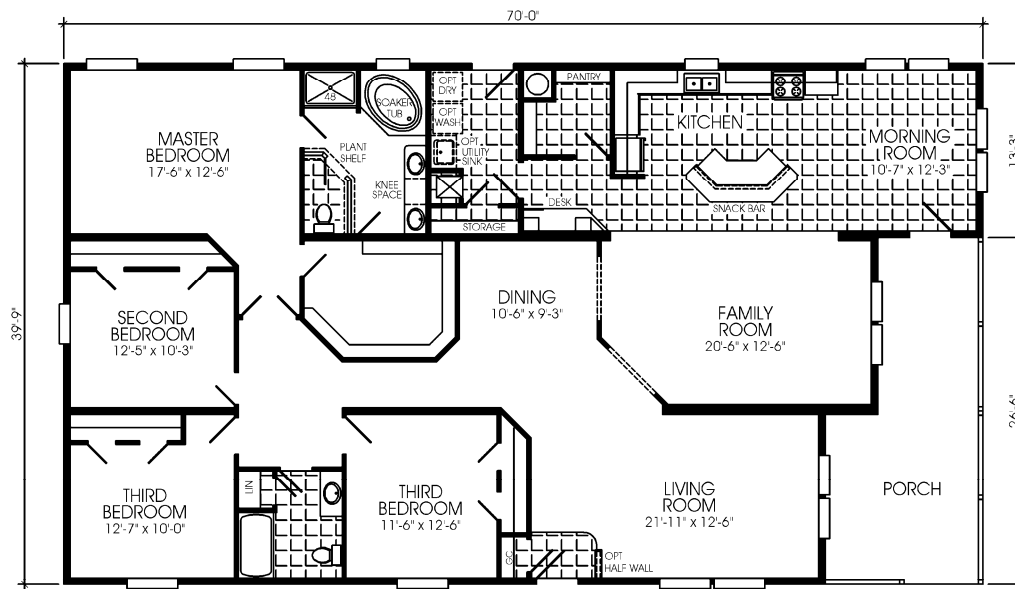




2540 SQ. FT.

4BR, 2 1/2BA, GREAT ROOM, FAMILY ROOM

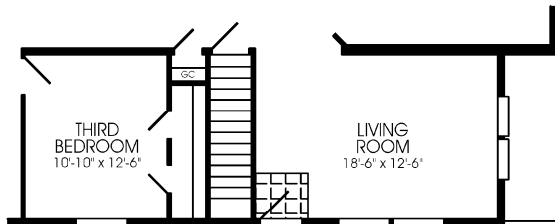
427202



2385 SQ. FT.

4BR, 2BA, FAMILY ROOM, ISLAND KITCHEN, PORCH

427401



OPTIONAL BASEMENT ENTRY
FOR 427401



STANDARD FEATURES for
ANNIVERSARY (QG SERIES) / ANNIVERSARY II (QH SERIES)

- Shingle Roof with Eaves
- 30 lb. Roof
- R22 Ceiling Insulation
- **(Residential Dormer Standard in QH Series)**
- Vinyl Siding with Fome-Cor Backer
- 2 X 6 Sidewalls With R19 Insulation
- 2 X 6 Floor Joists
- R18 Floor Insulation
- 90" Sidewalls
- Stainless Steel Sink
- Thermodynamically Engineered Electric Furnace
- Whole House Ventilation System
- 30" Electric Range with Power Hood
- 30 Gallon Electric Water Heater
- 18 CF 2 Door Frost Free Refrigerator with Glass Shelves
- Decorative Self-Edged Countertops
- Mini Blinds with Valances Throughout
- Acclaim Carpet with Pad in Living Room, Hall, Bedrooms & Dining Room (as Shown)
- Vinyl Entry Foyer
- Vinyl Floor Covering in Kitchen, Utility Room & Hall Bath
- Egress Windows in Bedrooms
- Low E Energy Efficient Vinyl Windows
- Smoke Detectors
- Exterior Receptacle with GFI
- Copper Wiring
- All Electric 200 Amp
- Tape & Textured Cathedral Ceiling Throughout (Except 42' Wide Center Section)
- Tape & Textured Walls in All Dry Areas
- Tape & Textured Wall/Ceiling Joints in All Dry Areas
- Ruff Stuff Vinyl Covered Gypsum Wall Panels in Wet Areas
- Bath Vent Fans
- Concealed LVL Beam
- 6-Panel Steel House-Type Exterior Doors
- Light at Each Exterior Door
- Bath Linen Cabinet as Shown
- Residential Cabinet Construction with Plaque Doors
- Cabinet Over Refrigerator
- Guest Closet and Pantry as Shown
- Strip Lights Over Beveled Mirrors in Baths
- Wrapped Cabinet Stiles
- White Interiors in Cabinets, Pantry & Linen
- Center Shelves in Kitchen Base Cabinets
- Backsplash in Kitchen & Baths
- Snack Bar as Shown
- Lever Metal Passage Door Knobs
- China Lav Sink
- Towel Bar & Paper Holder in Baths
- Elongated Water Saver Toilets
- Brass Plumbing Fittings
- Water Shut-Off Valves Throughout
- Plumb for Washer
- Wire for Dryer
- Recept in Freezer Space on Some Floorplans
- Ventilated Roof

09 - std features Anniversary DW series.doc

Effective Date: 07/20/09
Rev 07/10/09

Model number includes the overall length of the home, including approximately 48" for the hitch. Some tires, wheels, axles, and other components may be reused after inspection. Floor width of model 12s is 141", 14s is 165", 16s is 186", 24s is 270", 28s is 318", 32s is 360", and 42s is 477" to allow for necessary road clearance. Interior dimensions are to the wall surface and based on 2x6 exterior walls. Square footage is based on overall outside floor dimension. All prices and specifications are subject to change without notice.

OR-QGQH-09 Issued: 3/15/09 Revised: 8/7/09

