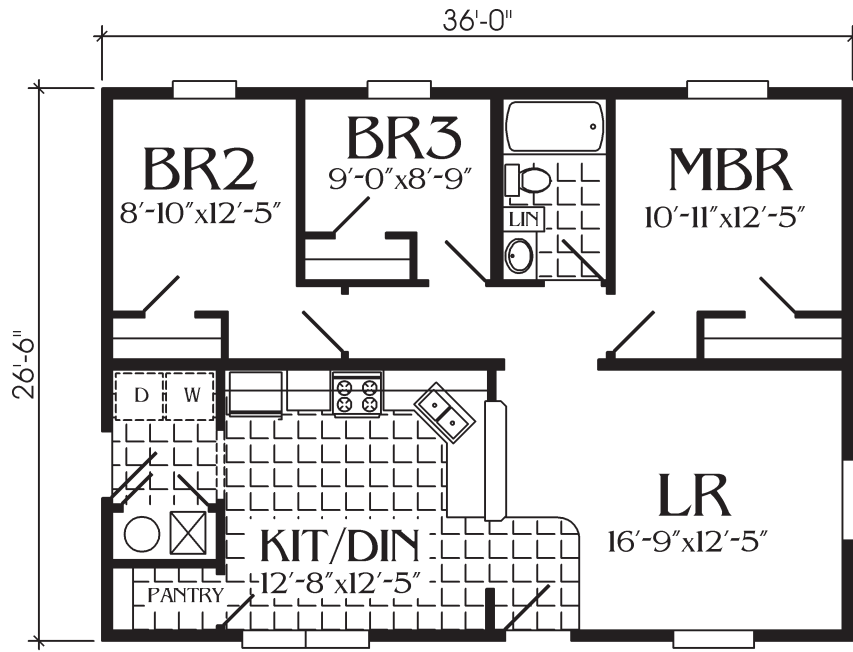




Elevation may reflect optional and/or site installed features

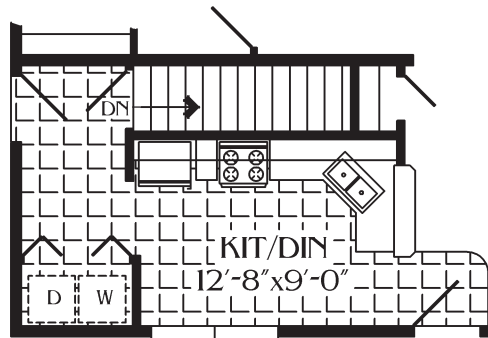


954 SQ. FT.

3BR, 2BA

M3R36-K03

The Spring Valley

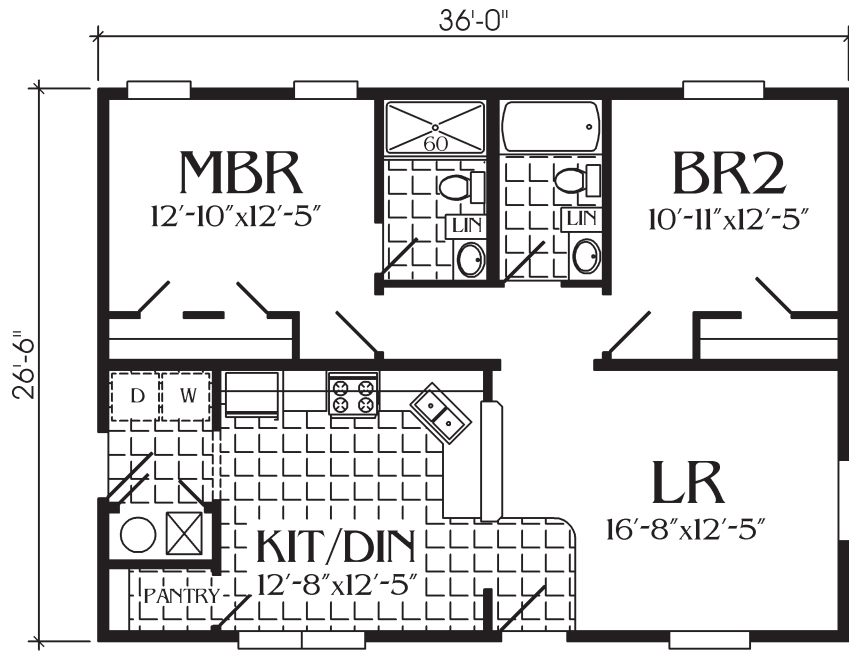


OPTIONAL BASEMENT ENTRY
REQUIRES FURNACE & WATER HEATER IN BASEMENT.





Elevation may reflect optional and/or site installed features

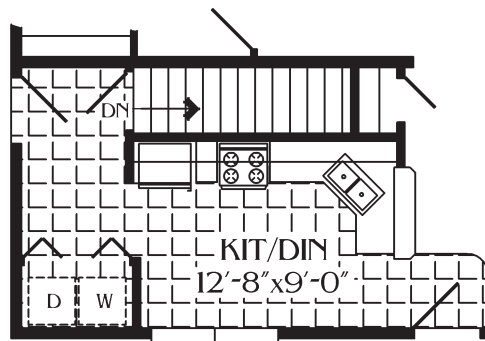


954 SQ. FT.

2BR, 2BA

M3R36-K04

The Spring Creek

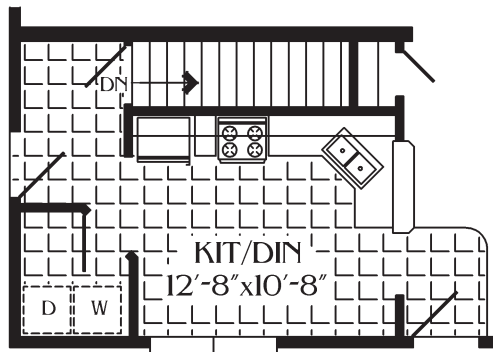
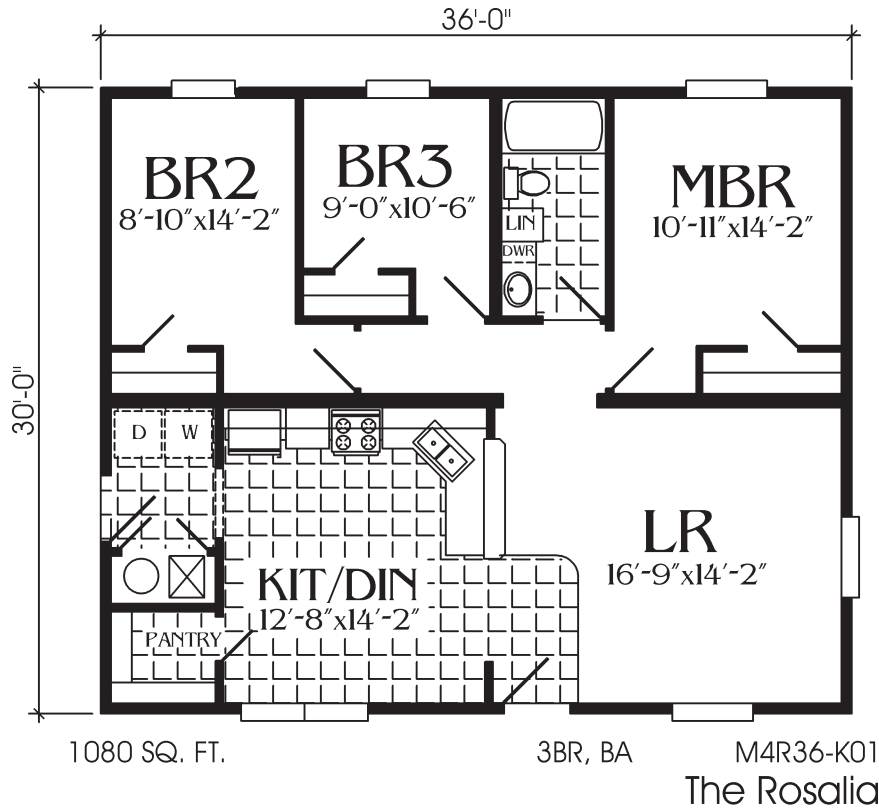


OPTIONAL BASEMENT ENTRY
REQUIRES FURNACE & WATER HEATER IN BASEMENT.





Elevation may reflect optional and/or site installed features

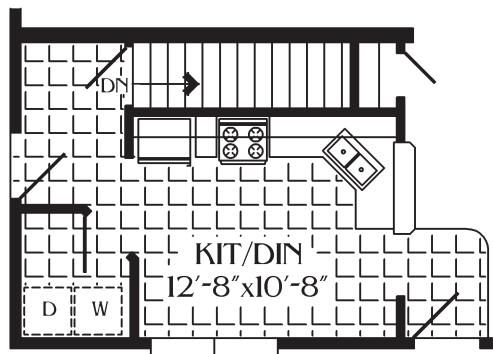
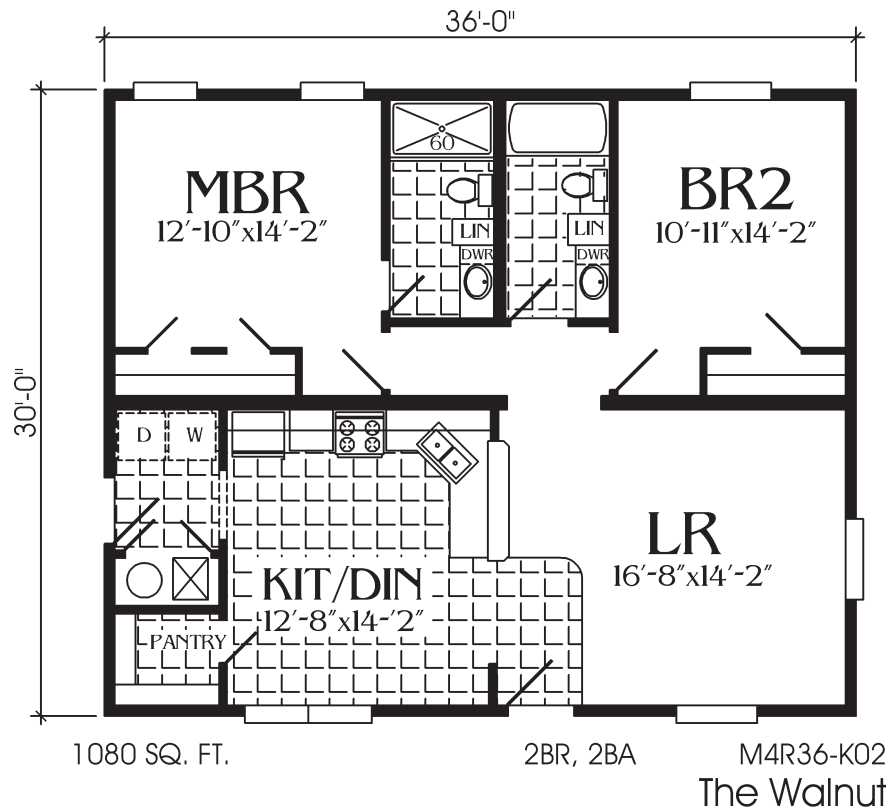


OPTIONAL BASEMENT ENTRY
REQUIRES FURNACE & WATER HEATER IN BASEMENT.





Elevation may reflect optional and/or site installed features

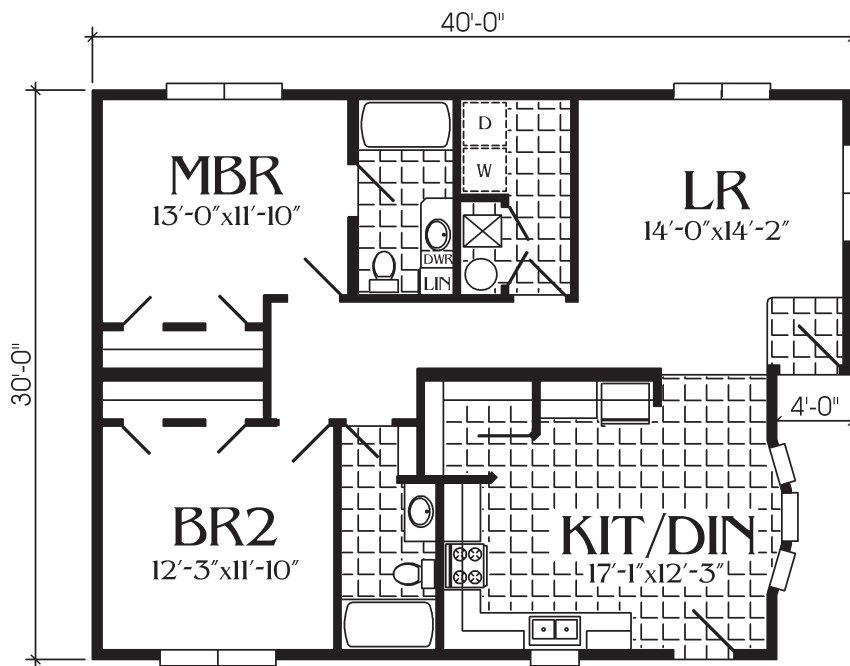


OPTIONAL BASEMENT ENTRY
REQUIRES FURNACE & WATER HEATER IN BASEMENT.



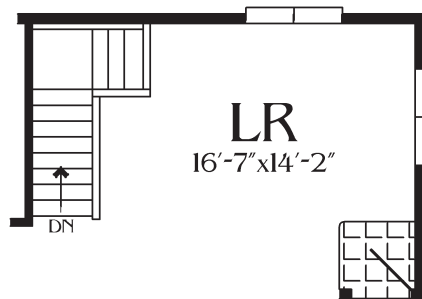


Elevation may reflect optional and/or site installed features



1144 SQ. FT.

2B, 2BA M4R40-K10
The Russell



OPTIONAL BASEMENT ENTRY
REQUIRES WASHER, DRYER, FURNACE & WATER HEATER IN BASEMENT.



**YODER, KANSAS STANDARD FEATURES for
YODER BUILT (J8) SERIES / YODER BUILT ELITE (J9) SERIES**

FLOOR

- ♦ Truss Floor Joists 19.2 OC
- ♦ Double 2X10 Rim Joists
- ♦ 3/4" Decking
- ♦ Fiberglass Heat Duct with Perimeter Registers & In-Floor Crossover

FLOOR COVERING

- ♦ New Day Carpet with 6.0# Rebond Pad in Living Areas with Tack Strip
- ♦ Hand Laid 16" X 16" Tile in Kitchen, Utility & Guest Baths
- ♦ 16" X 16" Tile Entry

PLUMBING

- ♦ Water Shut-Offs Standard
- ♦ 60" One-Piece Tub/Shower
- ♦ 1-Piece Fiberglass Separate Shower with Door as Shown
- ♦ China Sinks with Overflow & Pop-Up Drains in Baths
- ♦ Deep Stainless Steel Kitchen Sink
- ♦ Fresh Water Lines – Connected
- ♦ Water Hammers per Code
- ♦ Elongated Commodes
- ♦ Below Floor Drains by Others

FAUCETS

- ♦ Single-Lever with Sprayer in Kitchen
- ♦ Single-Lever Anti-Scald Shower & Tub/Shower Faucet
- ♦ Frost Free Anti-Siphon 8" Exterior Faucet (2)

EXTERIOR WALLS

- ♦ 2X6 16" OC with Double 2X6 Top Plate
- ♦ R19 Kraft Insulation
- ♦ 8' Sidewall Height

INTERIOR WALLS

- ♦ 2X4 16" OC Interior Walls
- ♦ 2X4 16" OC Marriage Walls
- ♦ Tape & Paint Finish Throughout

ROOF CONSTRUCTION

- ♦ Fiberglass Shingles
- ♦ Roof Attic Vents – Ridge Vents
- ♦ 4/12 Residential Roof
- ♦ OSB Roof Decking
- ♦ 12" Overhang on Sides & Ends (10" on 30' Widens)
- ♦ R38 Insulation
- ♦ Vapor Barrier
- ♦ Stomp Ceilings
- ♦ Residential Dormer

ELECTRICAL

- ♦ 2008 National Electric Code
- ♦ 12-2 Wire – Switch & Receptacle Circuits
- ♦ 200 Amp Main 20/40 Box
- ♦ Rocker Switches
- ♦ Smoke Detector with Battery Back-Up in Each Bedroom & Adjacent Area
- ♦ Steel Sleeves & Protectors in Exterior Walls
- ♦ Exterior GFI Receptacles (2)
- ♦ GFI Receptacles in Kitchen & Baths
- ♦ Bedroom Overhead Lights
- ♦ Wire & Prep for Ceiling Fan in Living Room

EXTERIOR

- ♦ Double 4 Dutch Lap Siding with OSB Backer & Windwrap
- ♦ Shutters on Front Doorside

DOORS

- ♦ 3'0" Steel Clad Front Door with Decorative Glass
- ♦ 3'0" Steel Clad 6-Panel Rear Door
- ♦ Dead Bolt Locks

WINDOWS

- ♦ Vinyl Thermopane Low E with T-Bar at Double & Triple Windows

APPLIANCES

- ♦ 18 CF FF Refrigerator
- ♦ 40 Gallon Electric Water Heater
- ♦ Dishwasher Installed

- ♦ 30" Gas Range with Electric Ignition & Lighted Hood
- ♦ Lighted Bath Vent Fan in All Baths
- ♦ High Efficiency Gas Furnace

DRAPES

- ♦ Valances & Mini Blinds

CABINETS

- ♦ Drawer Over Door Base Cabinet Construction with Silent Glide Drawer Guides
- ♦ Adjustable Overhead Shelves
- ♦ Cathedral Real Wood Doors
- ♦ Real Wood Face Frame
- ♦ Satin Knobs
- ♦ Hidden Hinges
- ♦ Decorative Self-Edged Countertops
- ♦ Drawer Bank or Commode Cabinet in Master Bath
- ♦ Vented Metal Shelving in Wardrobes
- ♦ **Cabinet Above Commode in Master Bath (J9)**

PASSAGE DOORS

- ♦ Woodgrain Coordinated Passage Doors
- ♦ 3 Hinges per Door
- ♦ Metal Door Knobs
- ♦ Floor Mounted Door Stops Throughout

MIRRORS

- ♦ Decorative Light with Beveled Mirror Over Lavs
- ♦ Towel & Paper Holders in Each Bath

LIGHT FIXTURES

- ♦ Can Light Over Kitchen Sink
- ♦ 8" Drum Kitchen Ceiling
- ♦ Glass Chandelier in Dining Room
- ♦ Tulip Lights in Baths above Mirrors
- ♦ Foyer Light
- ♦ Front & Rear Entry Light

2010 Std features - Yoder Built (J8) & Yoder Built Elite (J9).doc

Effective Date: 09/23/10
Rev 12/13/10

KS-J8J9 CABIN SERIES ISSUED: 12/17/10

