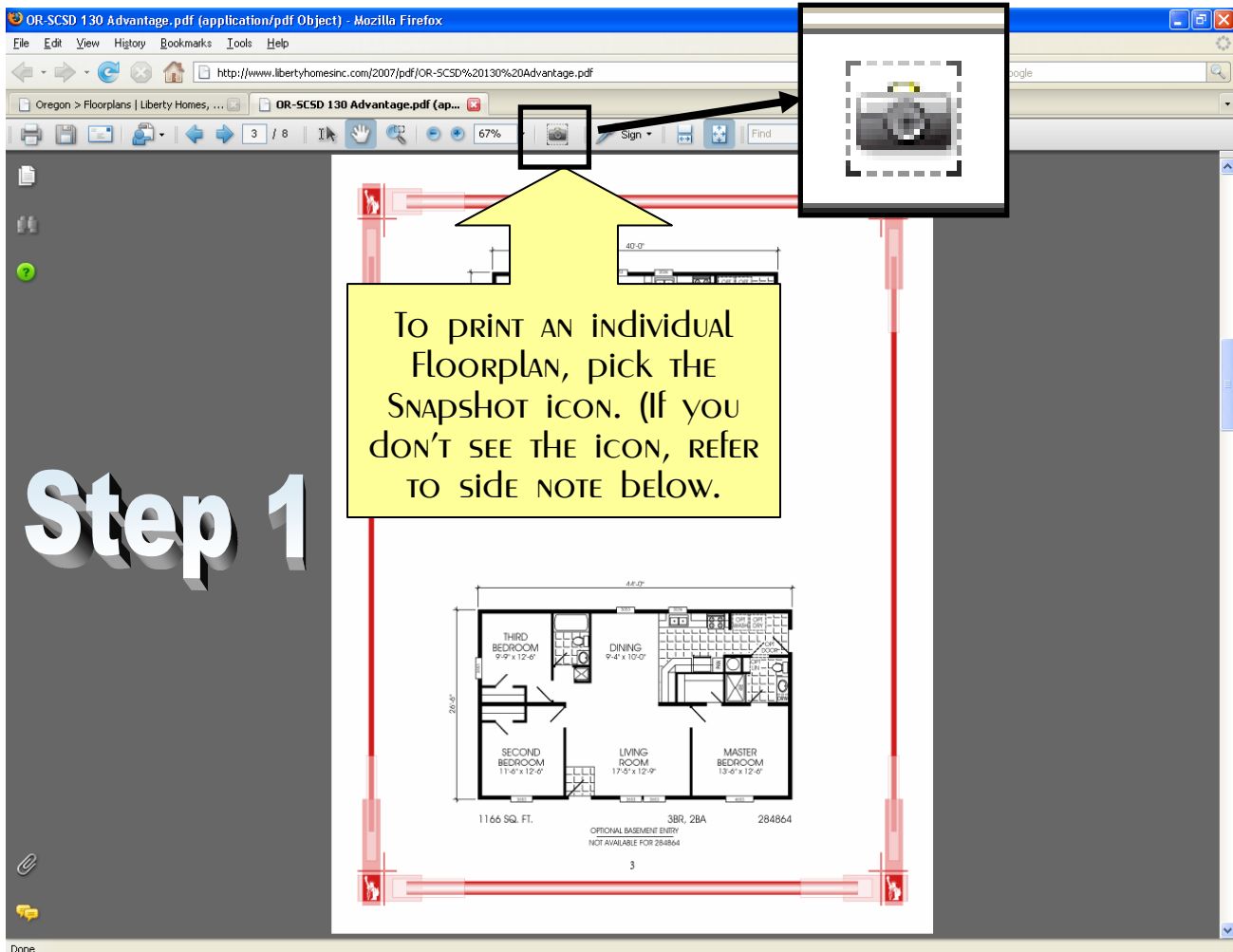
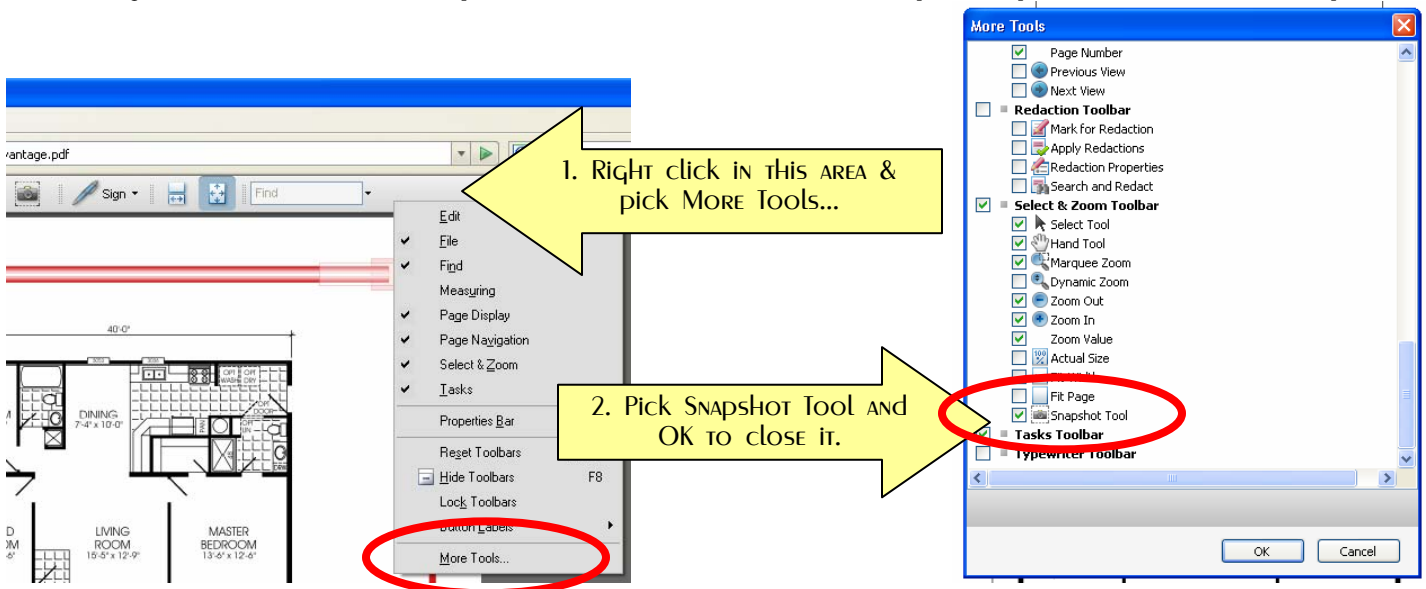


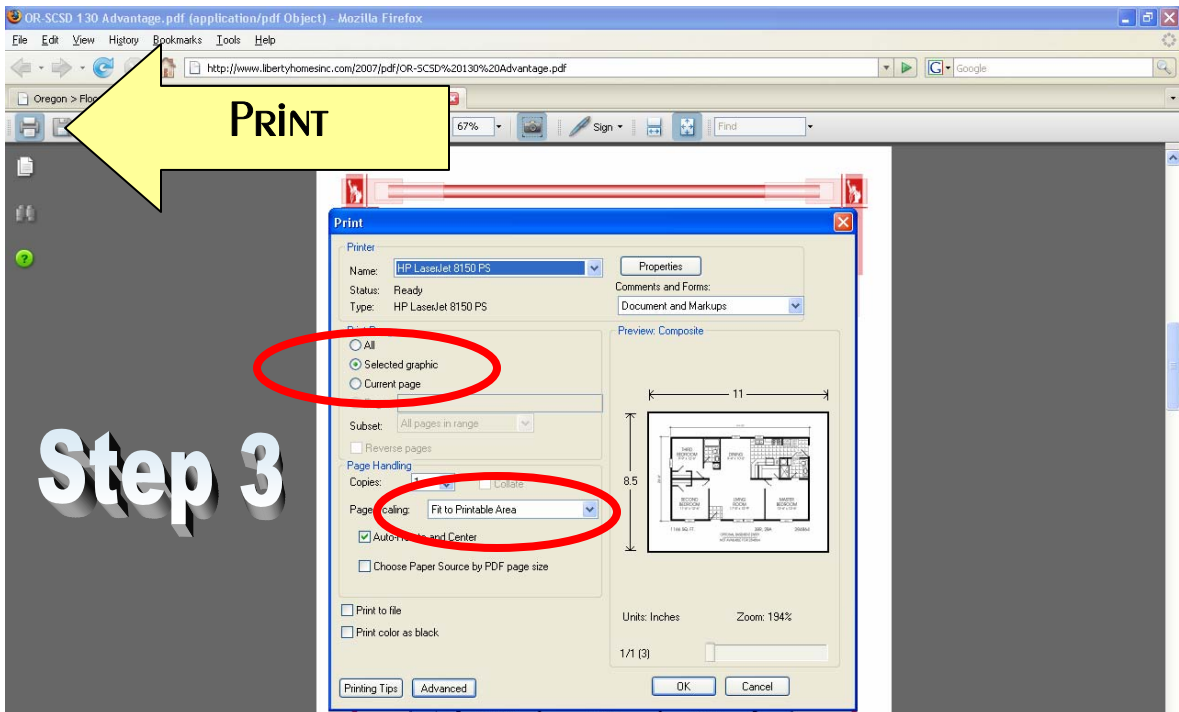
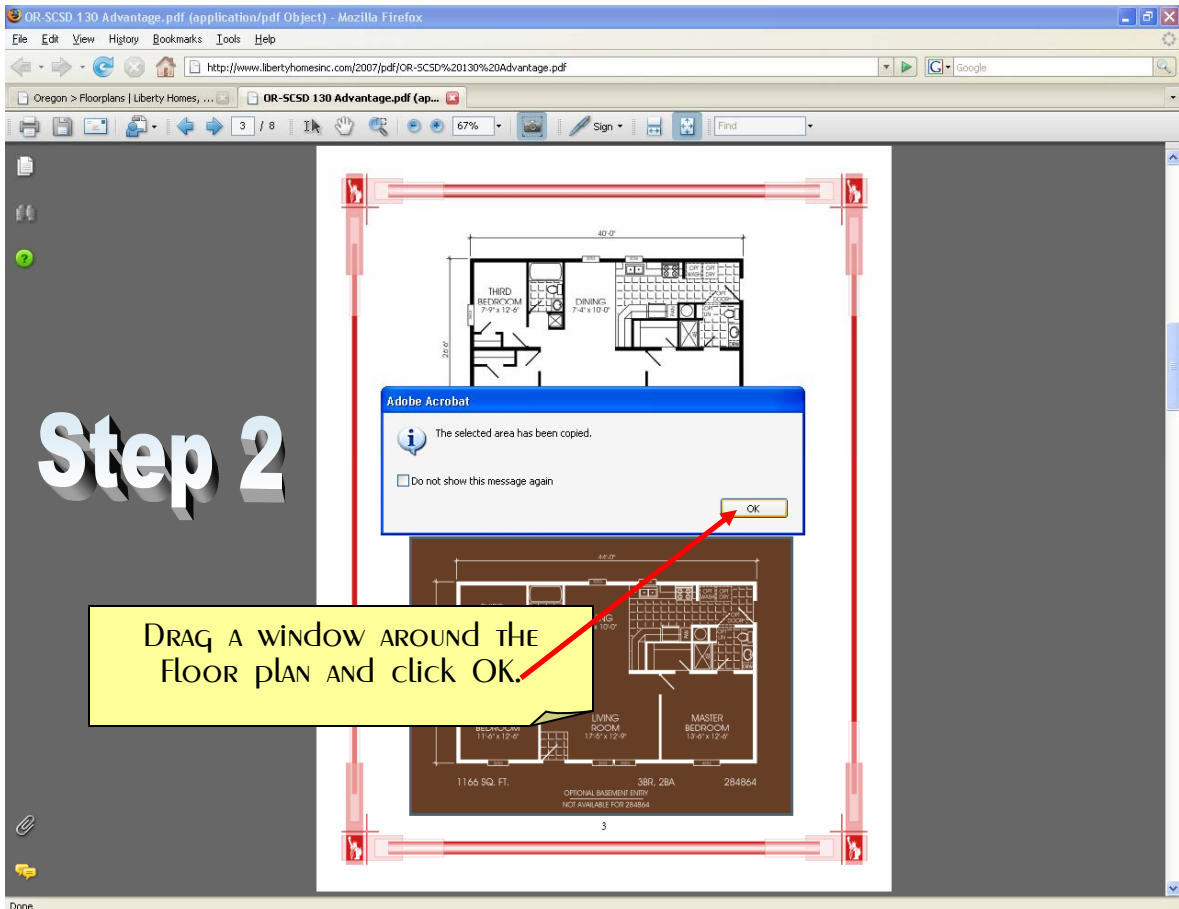
PRINTING INDIVIDUAL FLOORPLANS FROM OUR WEBSITE.



Side Note:

If you don't see the Snapshot icon, follow these 2 simple steps then return to Step 1.





Print Troubleshooting

If you're having problems printing, It could be that the file size is too large for your printer. Here's a simple way to decrease the size of your print job. After you take a Snapshot of the Floorplan, open up a program like Word, Wordpad, Paint or any other image capable software. Right click in it and pick Paste. Other than adjusting how it fits on the page, simply print it from the program you pasted it in.