



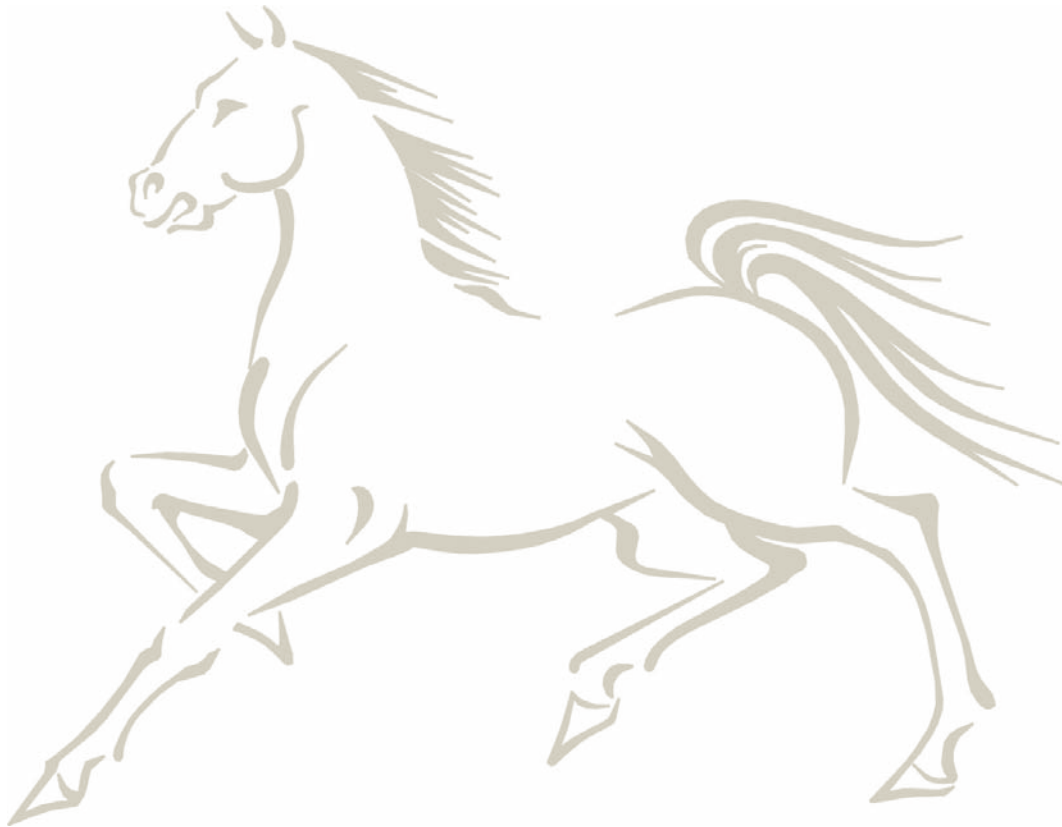
1



www.waverleehomesinc.com

Luxury Living





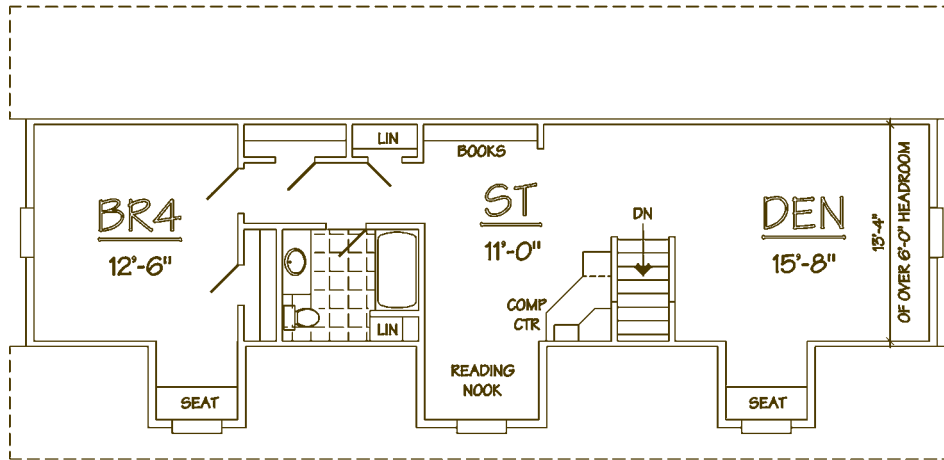
THE OXFORD

SPECS

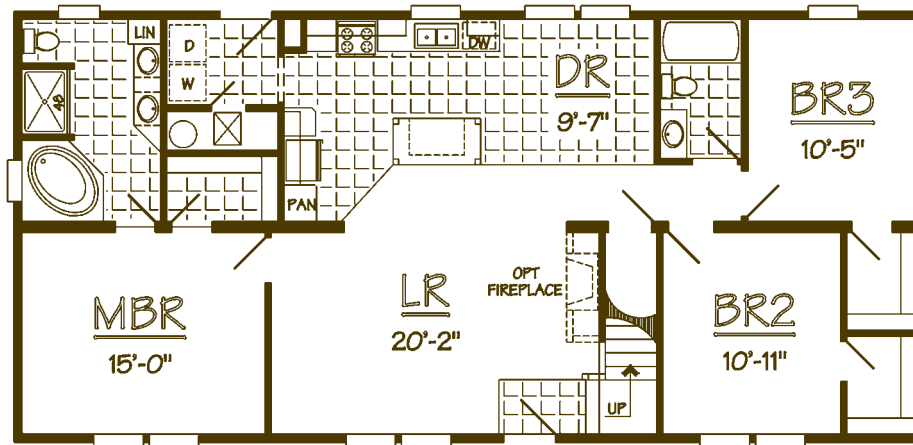
Model Number: M3C56-A01
 Square footage: 1484 sq. ft.
 Bedrooms: 3 Baths: 3
 Dimensions: 26'-6" x 56'-0"

HIGHLIGHTS

Spacious Island Kitchen
 Luxurious Master Bath with soaker tub
 Generous walk-in closets in all Bedrooms
 Roomy open-concept living area
 Future Expansion Second Floor



PROPOSED
 SECOND
 FLOOR
 SITE BUILT
 BY OTHERS



FIRST
 FLOOR



Elevation may reflect optional and/or site-installed features



THE SANDYRIDGE

SPECS

Model Number: M3R46-A01

Square Footage: 1060 sq. ft.

Bedrooms: 3 Baths: 2

Dimensions: 26'-6" x 46'-0"

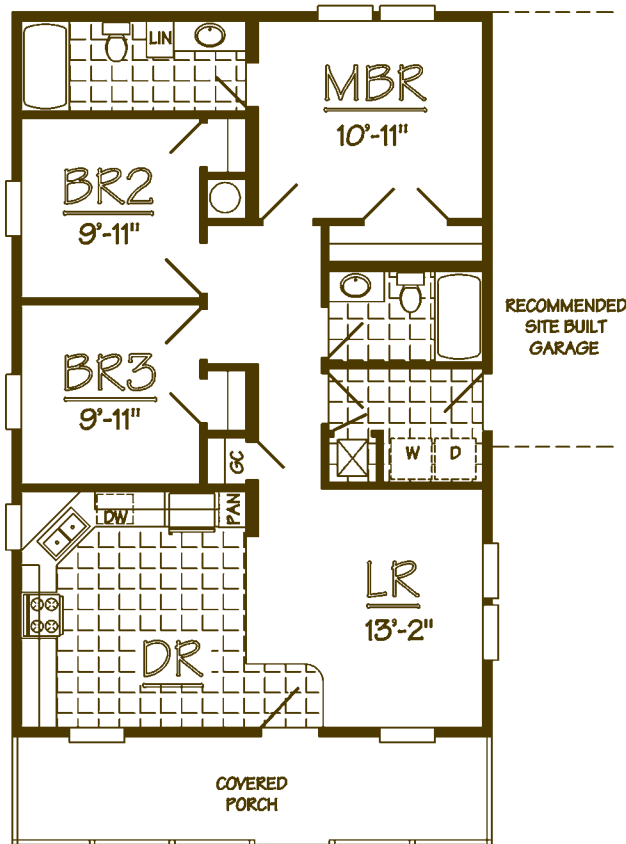
HIGHLIGHTS

Generous front porch for socializing

Compact Design for small lots

Eat-In Kitchen with plenty of cabinets

Side Garage may be easily attached



Elevation may reflect optional and/or site-installed features



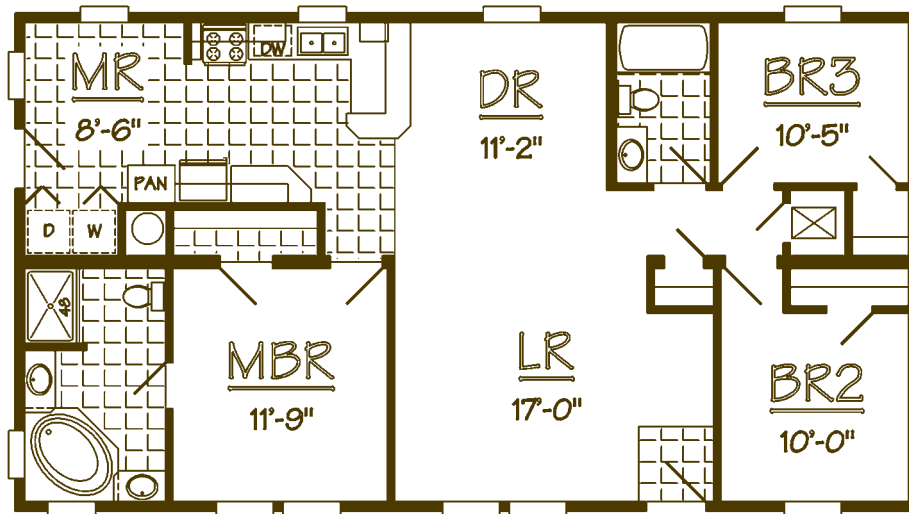
THE ANNISTON

SPECS

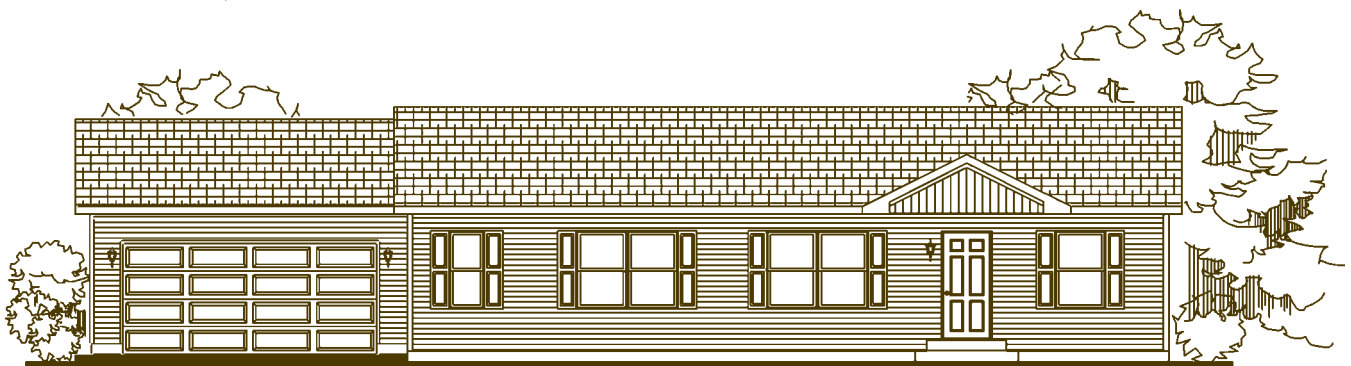
Model Number: M3R48-A03
Square Footage: 1272 sq. ft.
Bedrooms: 3 Baths: 2
Dimensions: 26'-6" x 48'-0"

HIGHLIGHTS

Convenient Kitchen with generous storage space
Cozy and bright Morning Room
Spacious Living Room for comfort
Master Bath with Soaker Tub and his 'n' her sink



THIS PLAN
AVAILABLE
WITH OPTIONAL
12/12
ATTIC OR CAPE ROOF



Elevation may reflect optional and/or site-installed features



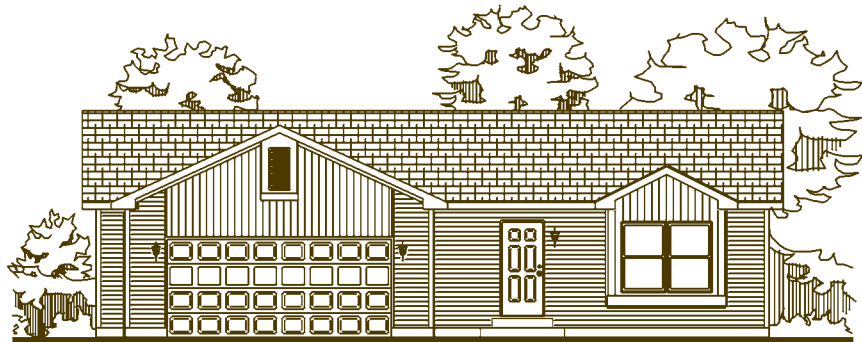
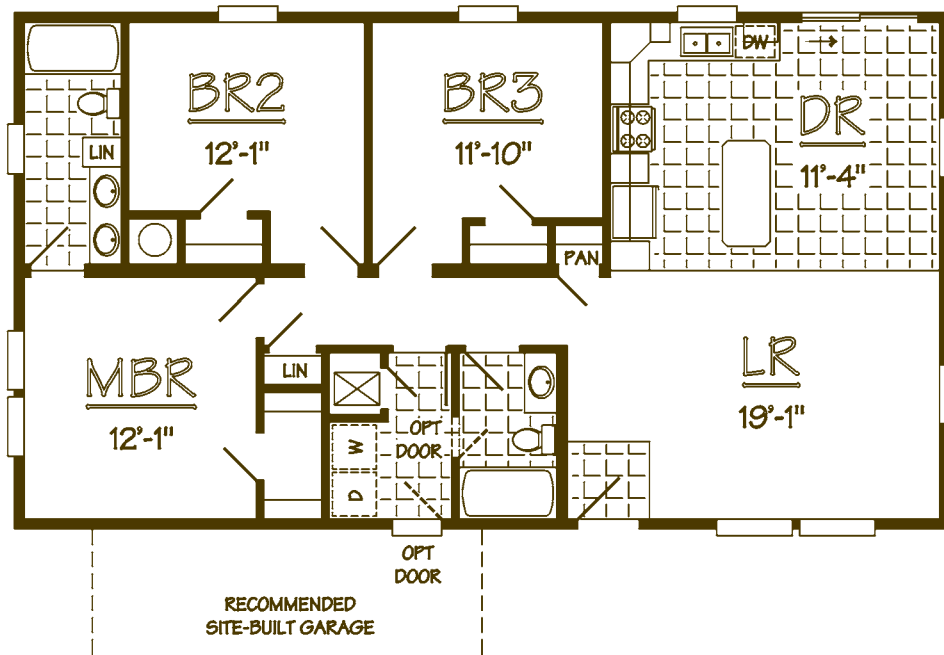
THE FLORENCE

SPECS

Model Number: M3R48-A05
Square footage: 1272 sq. ft.
Bedrooms: 3 Baths: 2
Dimensions: 26'-6" x 48'-0"

HIGHLIGHTS

Wide-open concept living area
Centrally-located large island in Kitchen
Master Suite features private Bath & walk-in closet
Exceptional storage spaces provided throughout



Elevation may reflect optional and/or site-installed features



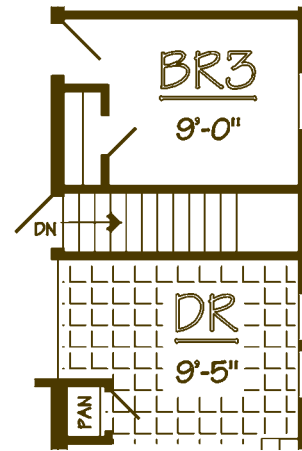
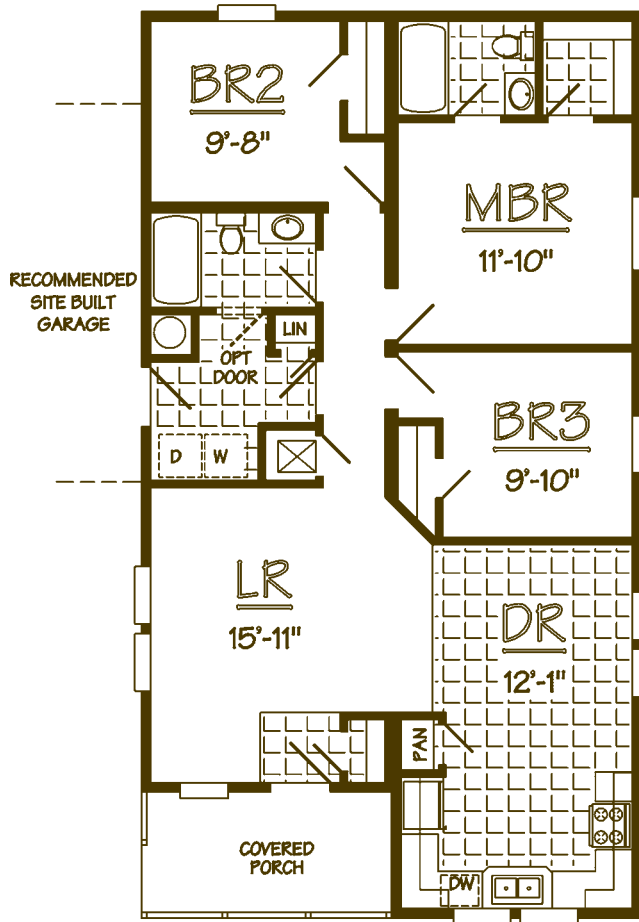
THE PRICHARD

SPECS

Model Number: M3R48-A08
 Total Living Space: 1184 sq. ft.
 Bedrooms: 3 Baths: 2
 Dimensions: 26'-6" x 48'-0"

HIGHLIGHTS

Narrow-lot plan ideal for tight spots
 Kitchen features spacious cabinets and pantry
 Generous storage space throughout
 Garage may be easily attached



OPTIONAL BASEMENT ENTRY



Elevation may reflect optional and/or site-installed features



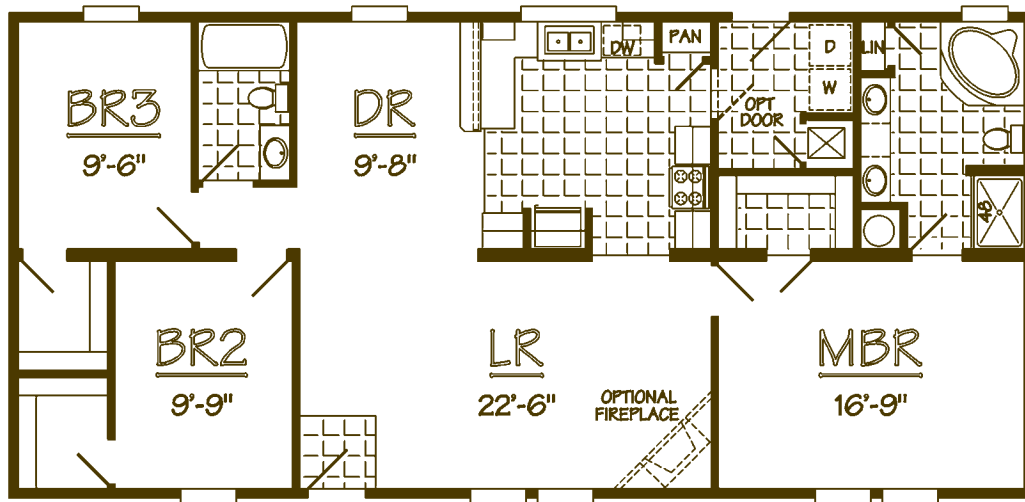
THE SCOTTSBORO

SPECS

Model Number: M3R56-A24
 Square footage: 1484 sq. ft.
 Bedrooms: 3 Baths: 2
 Dimensions: 26'-6" x 56'-0"

HIGHLIGHTS

Spacious Living Room for comfort
 Convenient Kitchen with raised snack/server bar
 Master Suite features private Bath with Corner Tub
 All Bedrooms with generous walk-in closets



THIS PLAN
 AVAILABLE
 WITH OPTIONAL
12/12
 ATTIC OR CAPE ROOF



Elevation may reflect optional and/or site-installed features



THE MADISON

SPECS

Model Number: M3R56-A25

Square Footage: 1378 sq. ft.

Bedrooms: 3 Baths: 2

Dimensions: 26'-6" x 56'-0"

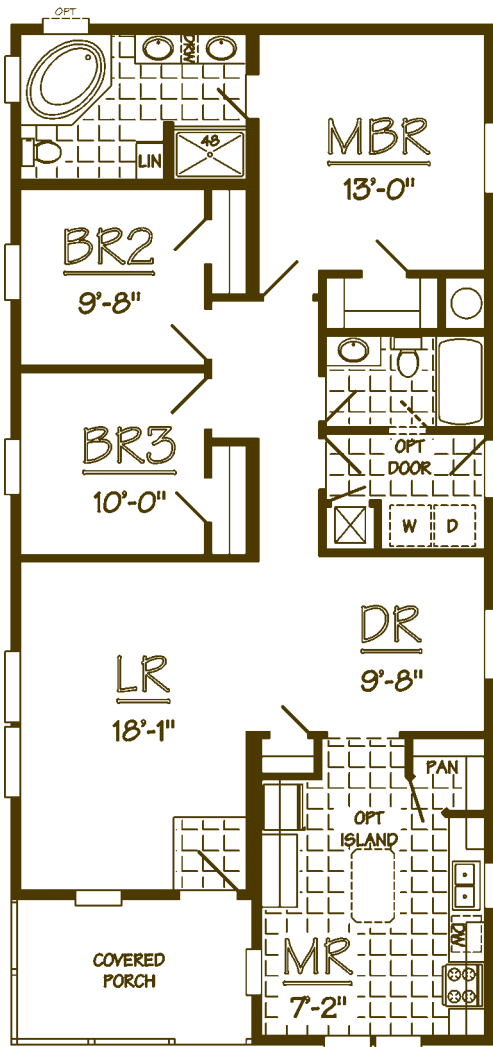
HIGHLIGHTS

Generous front porch for socializing

Spacious closets adorn all three Bedrooms

Eat-In Kitchen with large walk-in Pantry

Large Master Suite with generous walk-in closet



Elevation may reflect optional and/or site-installed features



THE BAY ST. LOUIS

SPECS

Model Number: M3R64-A02

Square Footage: 1590 sq. ft.

Bedrooms: 3 Baths: 2

Dimensions: 26'-6" x 64'-0"

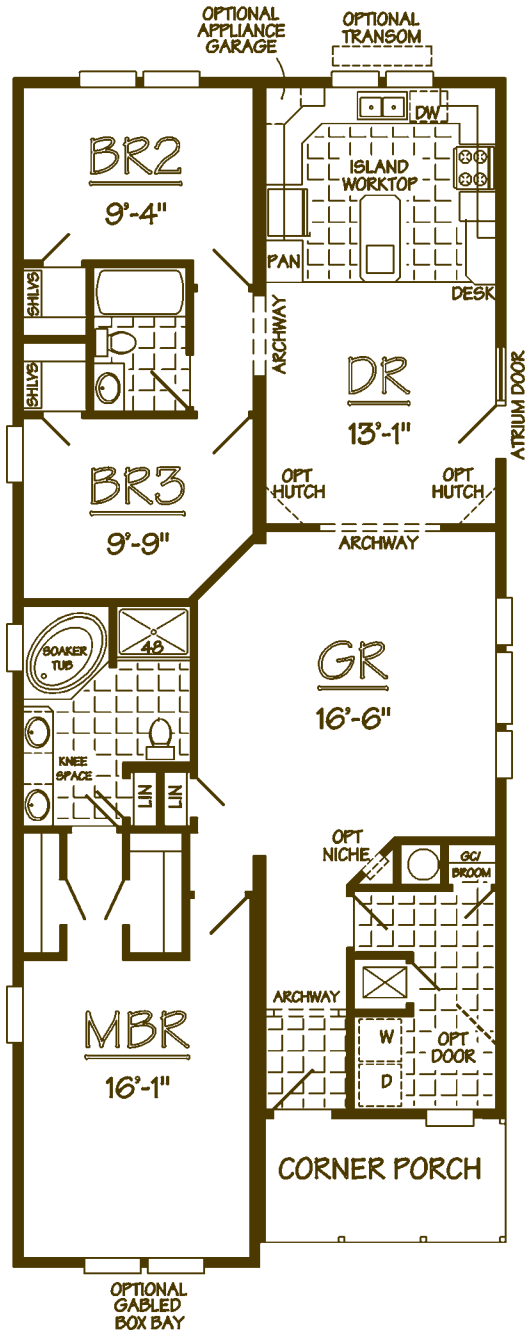
HIGHLIGHTS

Designed especially for narrow-lot placement

Oversized Kitchen complete with island

Walk-in closets, all Bedrooms

Luxurious Master Bath with soaker tub



Elevation may reflect optional and/or site-installed features



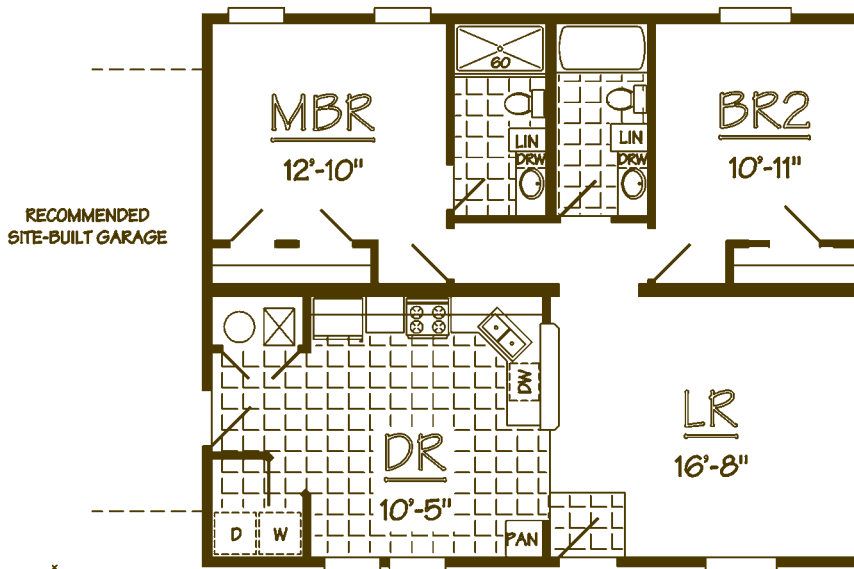
THE ROANOKE

SPECS

Model Number: M4R36-A02
 Square footage: 1080 sq. ft.
 Bedrooms: 2 Baths: 2
 Dimensions: 30'-0" x 36'-0"

HIGHLIGHTS

Wraparound Kitchen complete with pantry
 Handy snack bar separates Living Room and Kitchen
 Back-to-back Baths complete with linen cabinets
 Large Master Bedroom with storage to spare



THIS PLAN
 AVAILABLE
 WITH OPTIONAL
 12/12
 ATTIC OR CAPE ROOF



Elevation may reflect optional and/or site-installed features



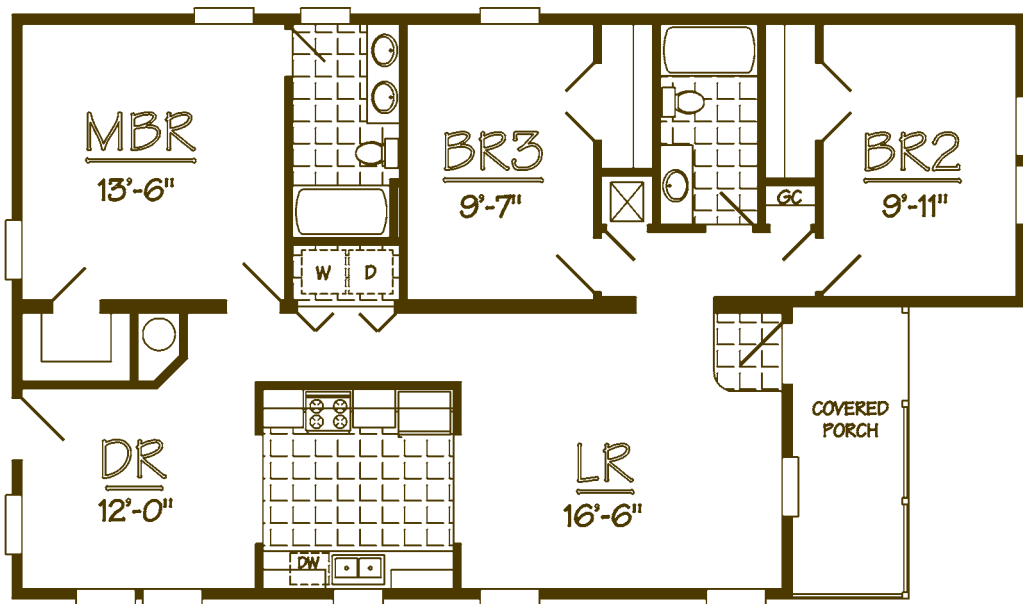
THE OHATCHEE

SPECS

Model Number: M4R52-A06
Square Footage: 1380 sq. ft.
Bedrooms: 3 Baths: 2
Dimensions: 30'-0" x 52'-0"

HIGHLIGHTS

Designed especially for narrow-lot placement
Generous size Bedrooms throughout
Abundant Bedroom Storage throughout
Master Bedroom with private bath



Elevation may reflect optional and/or site-installed features



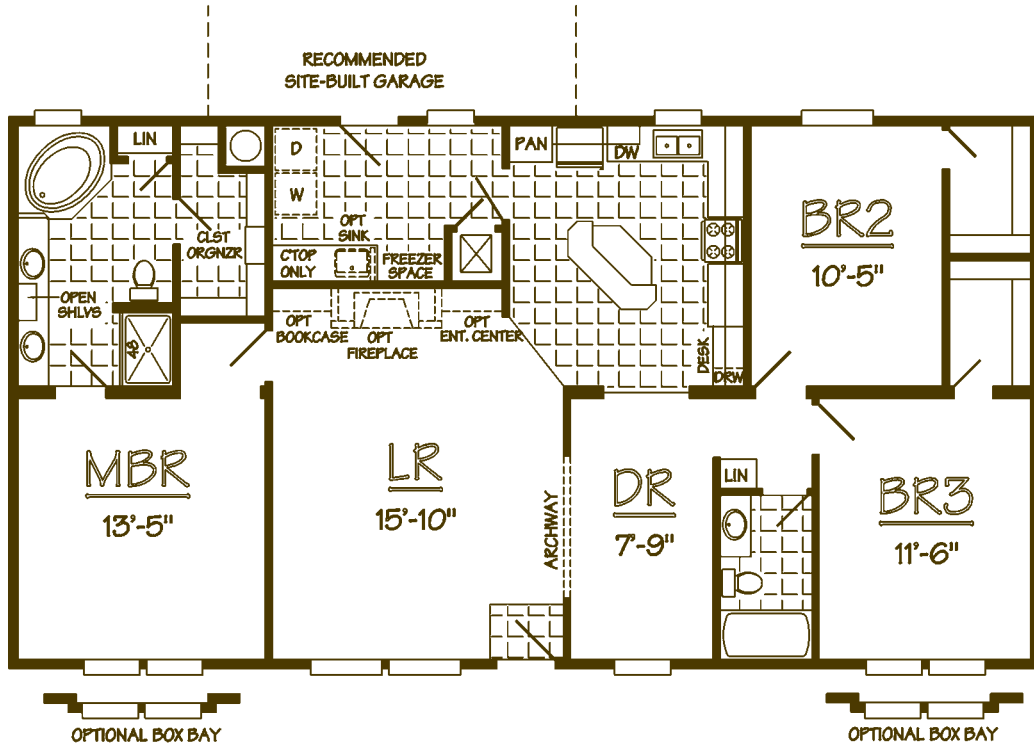
THE FAIRFIELD

SPECS

Model Number: M4R56-A07
 Square footage: 1680 sq. ft.
 Bedrooms: 3 Baths: 2
 Dimensions: 30'-0" x 56'-0"

HIGHLIGHTS

Generous Kitchen cabinetry and snack bar
 Luxurious Master Bath with soaker tub
 Giant walk-in closets throughout
 Convenient Utility Room with space to spare



Elevation may reflect optional and/or site-installed features



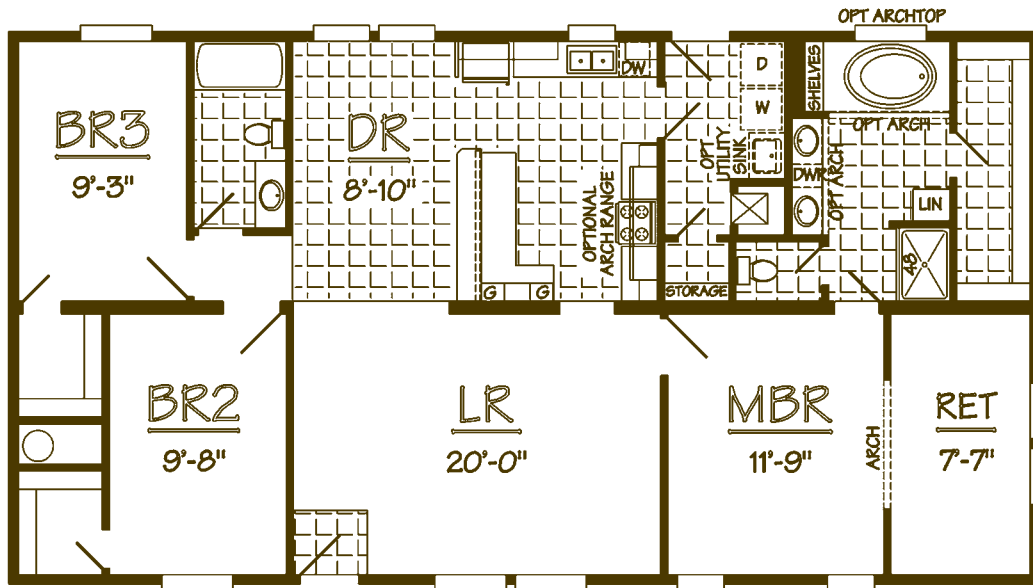
THE DAVISTON

SPECS

Model Number: M4R56-A09
 Square Footage: 1680 sq. ft.
 Bedrooms: 3 Baths: 2
 Dimensions: 30'-0" x 56'-0"

HIGHLIGHTS

Master Bedroom Retreat for getting away
 Kitchen features large snack bar
 Excellent walk-in closets in BR2 & BR3
 Spacious Master Bath with huge walk-in closet



Elevation may reflect optional and/or site-installed features



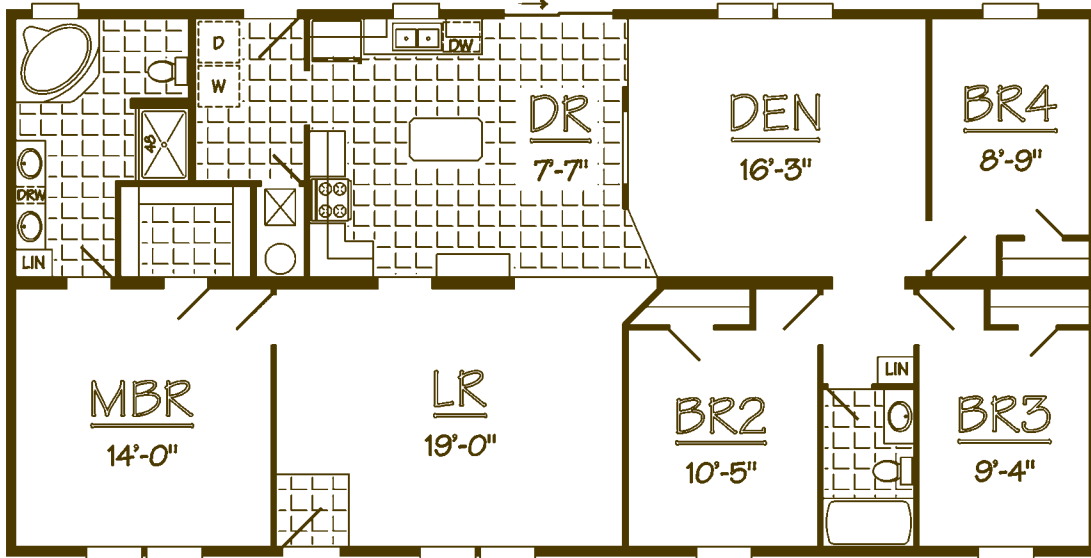
THE TUSKEGEE

SPECS

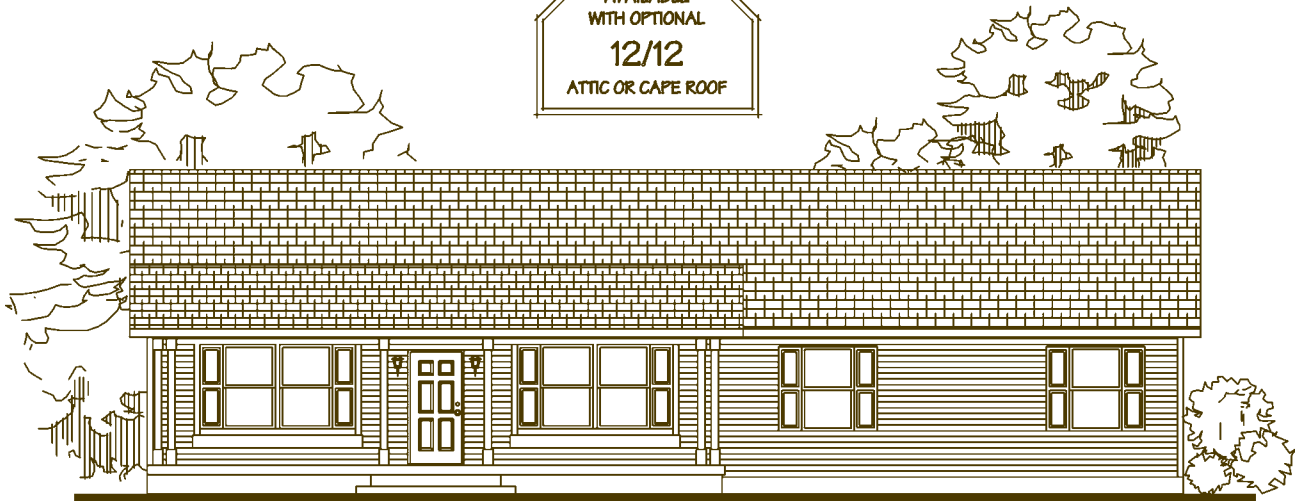
Model Number: M4R60-A06
 Square Footage: 1800 sq. ft.
 Bedrooms: 4 Baths: 2
 Dimensions: 30'-0" x 60'-0"

HIGHLIGHTS

Roomy Living Room and Cozy Den
 Spacious Utility Room directly off Kitchen
 Opulent Master Bath has his 'n' hers sinks
 Kitchen is complete with handy worktop island



THIS PLAN
 AVAILABLE
 WITH OPTIONAL
12/12
 ATTIC OR CAPE ROOF



Elevation may reflect optional and/or site-installed features



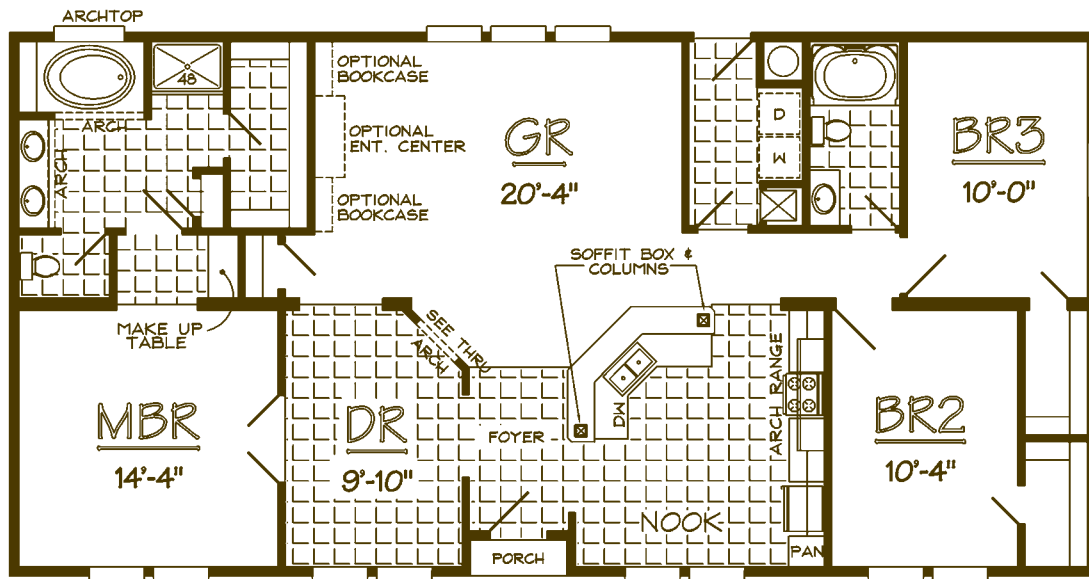
THE HELENA

SPECS

Model Number: M4R60-A14
 Square Footage: 1789 sq. ft.
 Bedrooms: 3 Baths: 2
 Dimensions: 30'-0" x 60'-0"

HIGHLIGHTS

Open Kitchen with eat-in Nook
 Walk-in closets throughout
 Great Room excellent for entertaining
 Fantastic Master Bath with Soaker Tub



Elevation may reflect optional and/or site-installed features



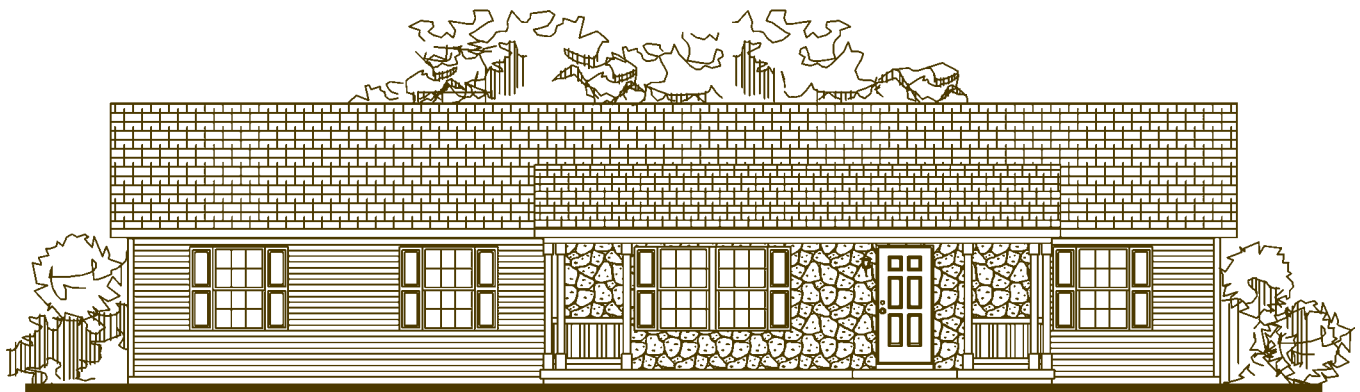
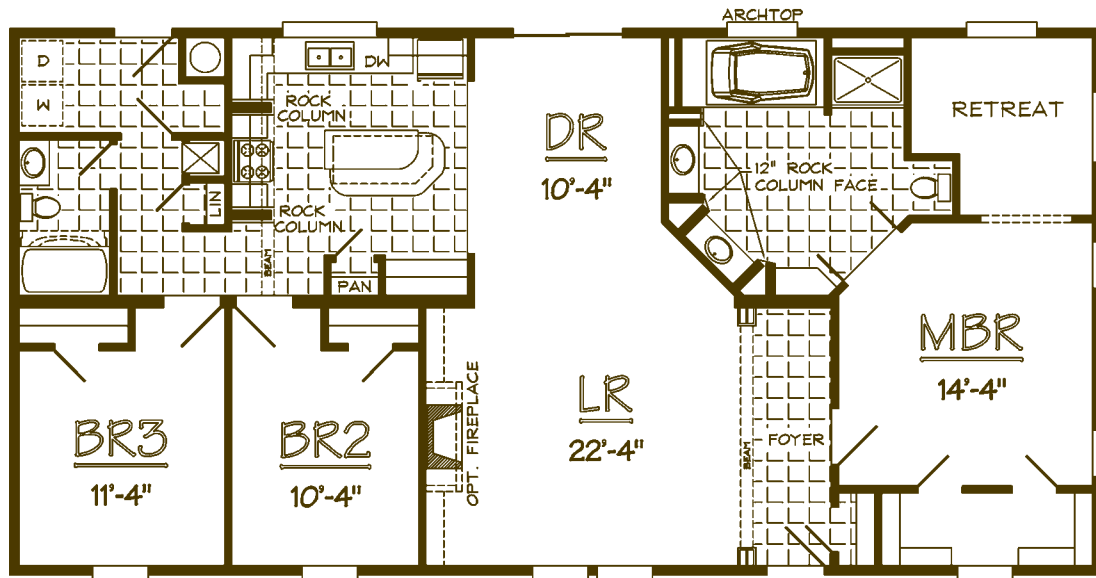
THE VESTAVIA

SPECS

Model Number: M4R60-A15
 Square Footage: 1800 sq. ft.
 Bedrooms: 3 Baths: 2
 Dimensions: 30'-0" x 60'-0"

HIGHLIGHTS

Smart Kitchen island with snack bar
 Master Bedroom offers private Retreat
 Spacious Living Room for comfort
 Elegant Foyer for a proper greeting



Elevation may reflect optional and/or site-installed features



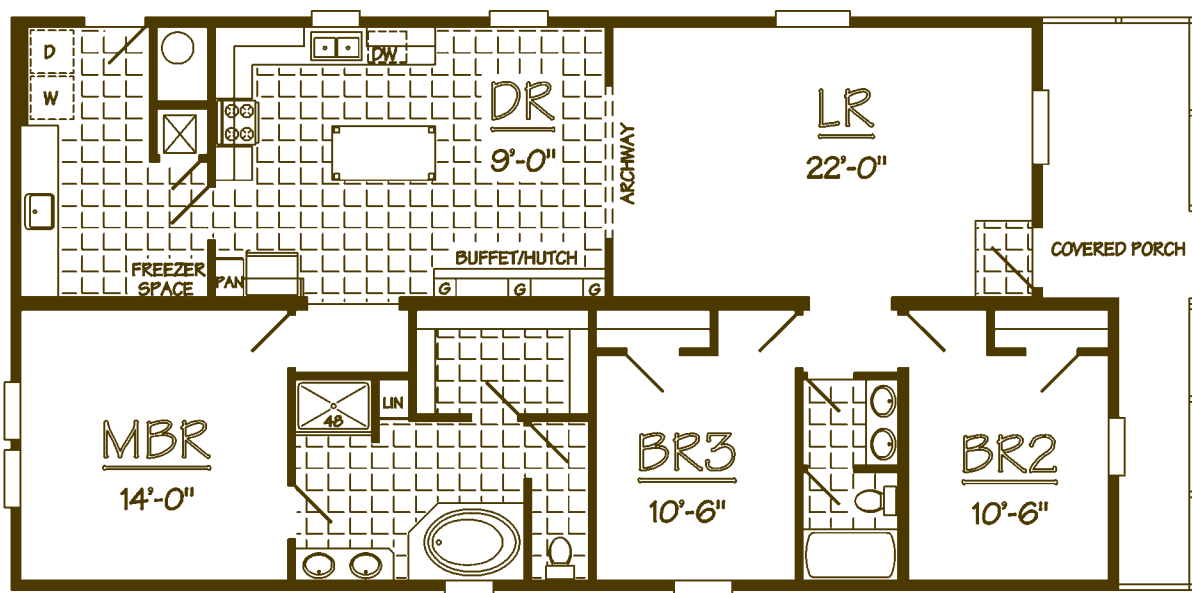
THE MAGNOLIA

SPECS

Model Number: M4R62-A03
 Square Footage: 1680 sq. ft.
 Bedrooms: 3 Baths: 2
 Dimensions: 30'-0" x 62'-0"

HIGHLIGHTS

Master Bed/Bath Suite with two sinks and soaker tub
 Spacious Living Room opens into Dining Room
 Kitchen is complete with handy worktop island
 Spacious Utility Room directly off Kitchen



Elevation may reflect optional and/or site-installed features



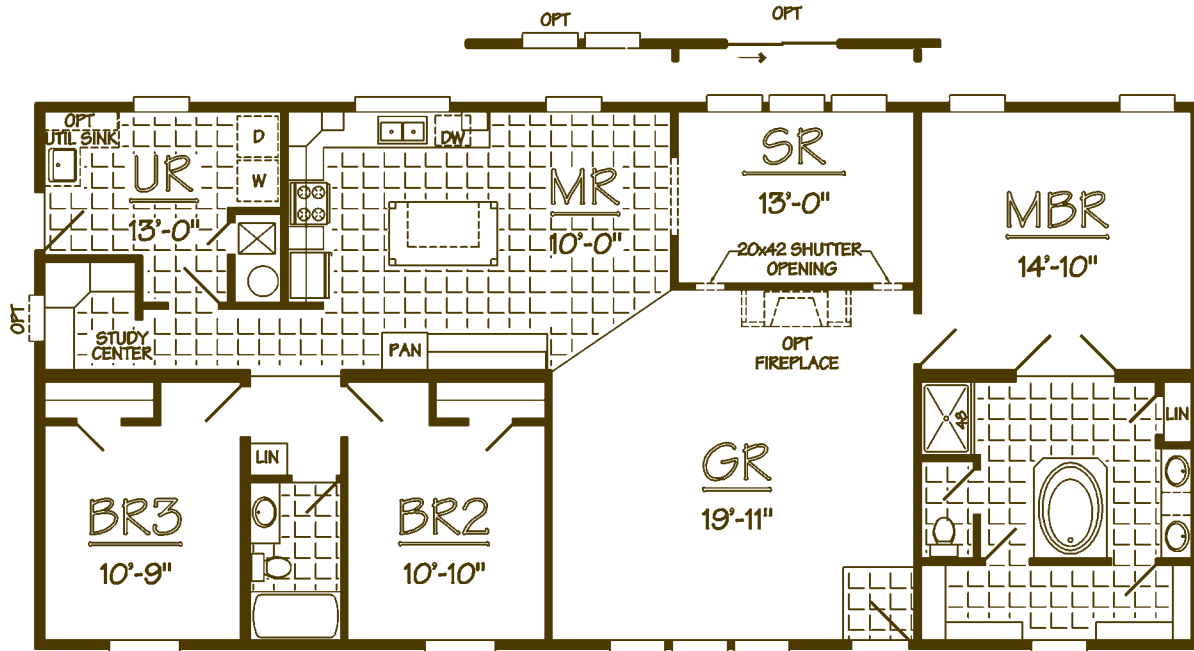
THE ASHRIDGE

SPECS

Model Number: M4R64-A07
 Square Footage: 1920 sq. ft.
 Bedrooms: 3 Baths: 2
 Dimensions: 30'-0" x 64'-0"

HIGHLIGHTS

Spacious Kitchen highlighted by large work island
 Cozy Morning Room adjacent Sun Room
 Luxury Master Bath with extra roomy walk-in closet
 Wide Open Great Room



THIS PLAN
 AVAILABLE
 WITH OPTIONAL
12/12
 ATTIC OR CAPE ROOF



Elevation may reflect optional and/or site-installed features



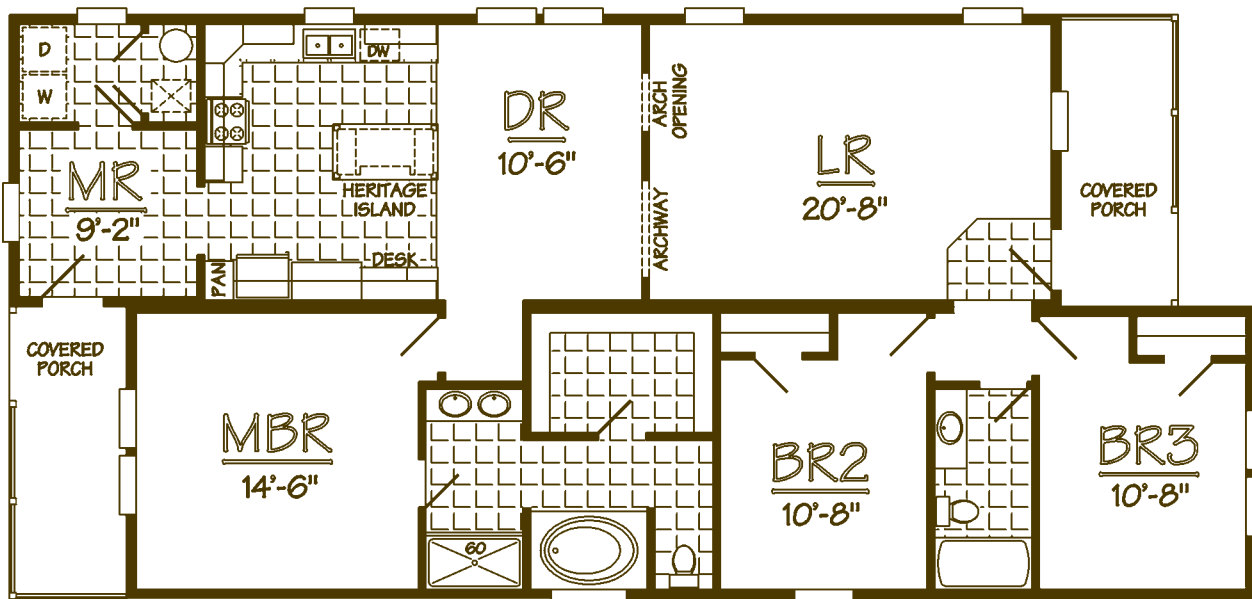
THE LEXINGTON

SPECS

Model Number: M4R64-A09
 Square Footage: 1680 sq. ft.
 Bedrooms: 3 Baths: 2
 Dimensions: 30'-0" x 64'-0"

HIGHLIGHTS

Front and Rear Porch for socializing
 Generous Kitchen complete with island and desk
 Master Bed/Bath Suite with soaker tub and large shower
 Cozy Morning Room off Kitchen and rear porch



Elevation may reflect optional and/or site-installed features



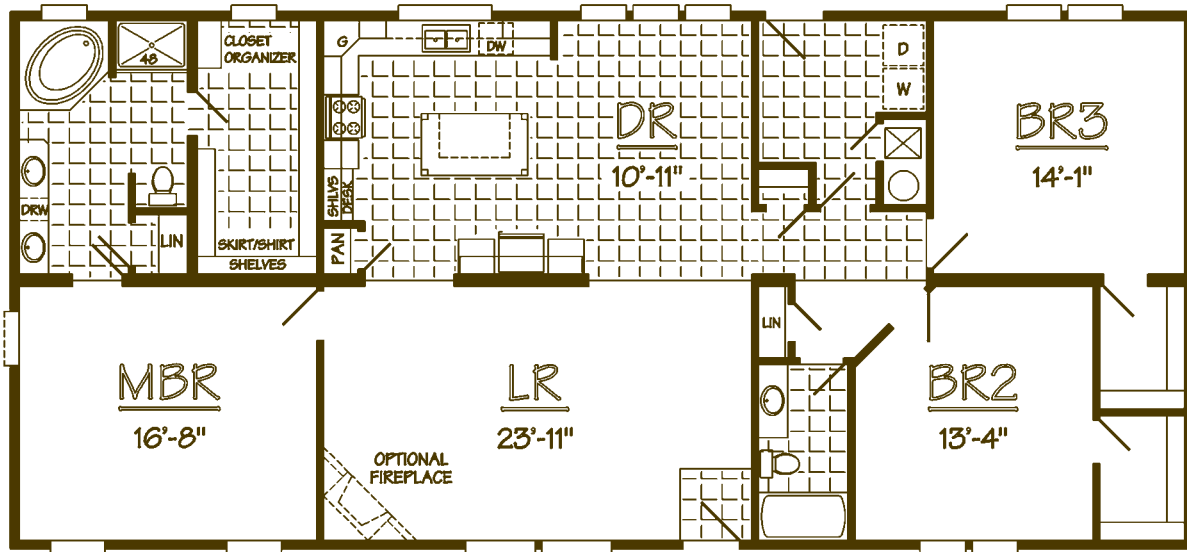
THE TROY

SPECS

Model Number: M4R66-A06
Square Footage: 1980 sq. ft.
Bedrooms: 3 Baths: 2
Dimensions: 30'-0" x 66'-0"

HIGHLIGHTS

Wide-open and Spacious Living Room
Kitchen features island, desk and pantry
Abundant Storage throughout
Spacious Master Bath with huge walk-in closet



THIS PLAN
AVAILABLE
WITH OPTIONAL
12/12
ATTIC OR CAPE ROOF



Elevation may reflect optional and/or site-installed features



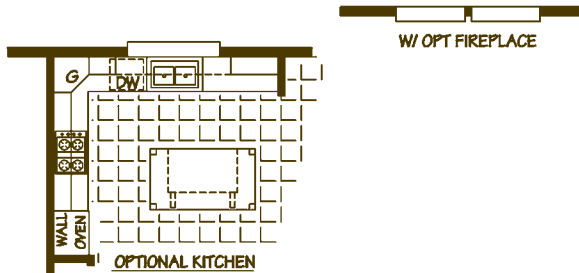
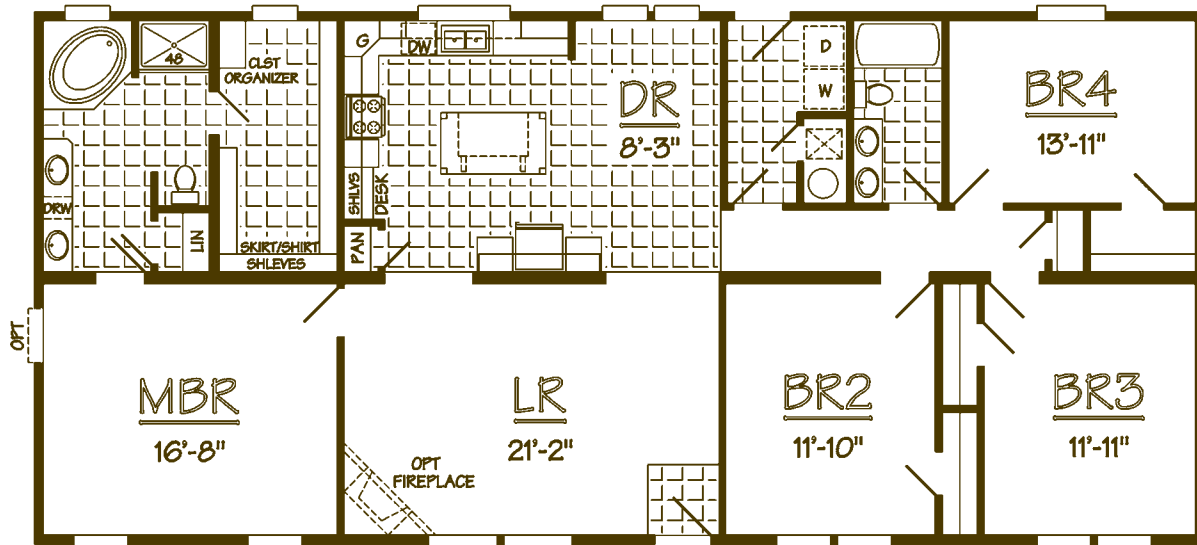
THE DOTHAN

SPECS

Model Number: M4R66-A08
 Square Footage: 1980 sq. ft.
 Bedrooms: 4 Baths: 2
 Dimensions: 30'-0" x 66'-0"

HIGHLIGHTS

Spacious Island Kitchen
 Luxurious Master Bath with soaker tub
 Generous size Bedrooms throughout
 Abundant Bedroom Storage throughout



Elevation may reflect optional and/or site-installed features



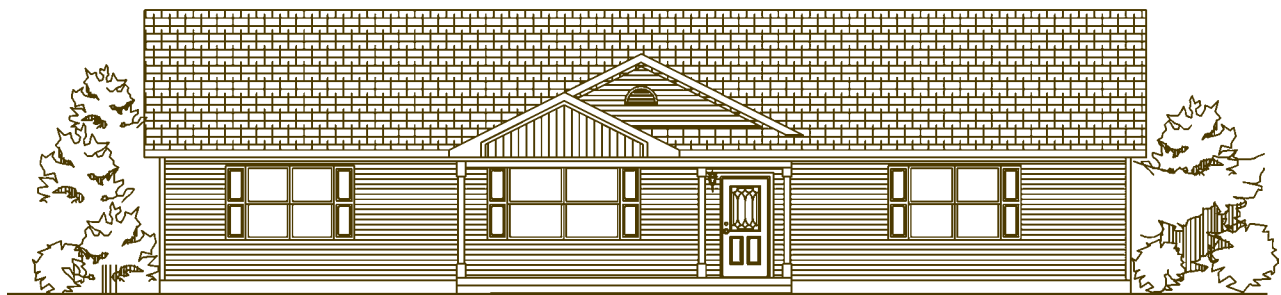
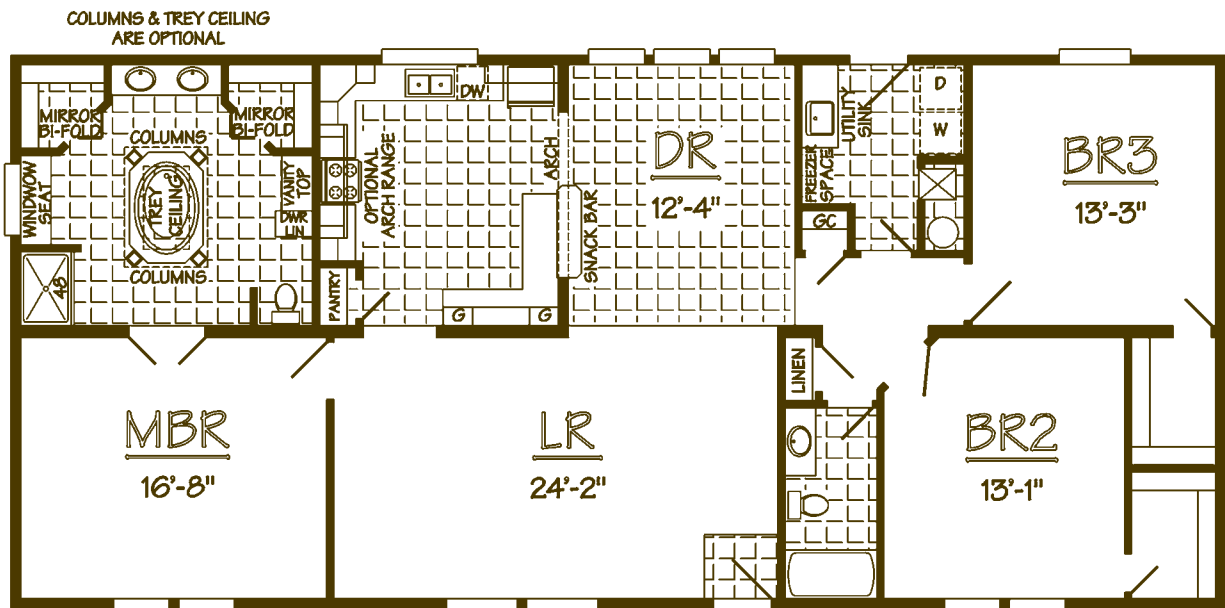
THE BRANTLEY

SPECS

Model Number: M4R66-A10
 Square Footage: 1980 sq. ft.
 Bedrooms: 3 Baths: 2
 Dimensions: 30'-0" x 66'-0"

HIGHLIGHTS

Abundant Kitchen space complete with snack bar
 Pantry, linen & guest closet provides extra storage room
 Luxury Master Bath with his 'n' hers closets
 Bedrooms are sized generously throughout



Elevation may reflect optional and/or site-installed features



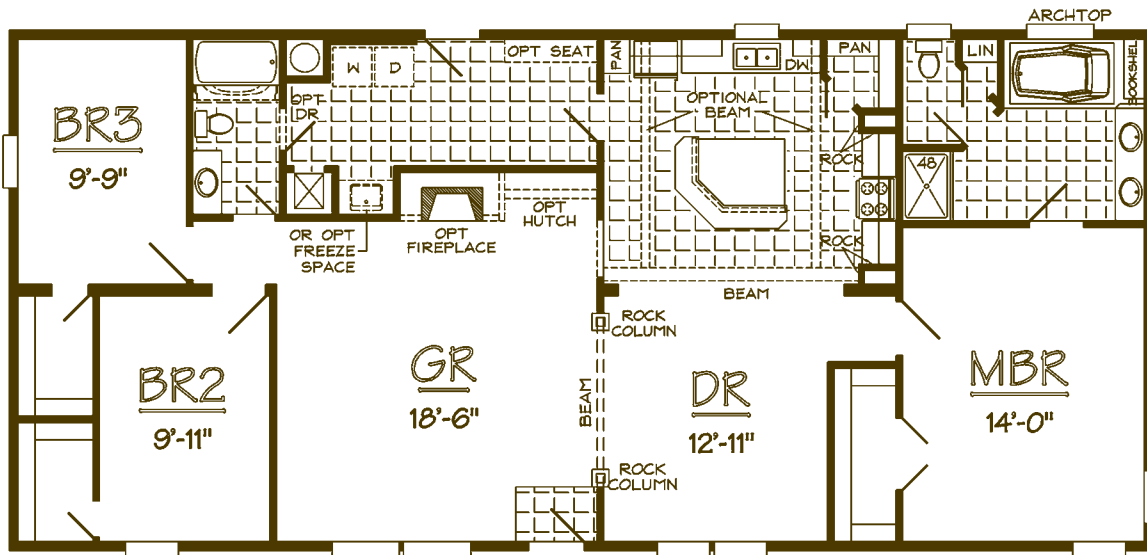
THE BRUNDIGE

SPECS

Model Number: M4R66-A11
 Square Footage: 1980 sq. ft.
 Bedrooms: 3 Baths: 2
 Dimensions: 30'-0" x 66'-0"

HIGHLIGHTS

Large Kitchen Island with wrap around snack bar
 Spacious Formal Dining
 Great Room offers unlimited possibilities
 Walk-in Pantry in Kitchen provides plentiful storage



Elevation may reflect optional and/or site-installed features



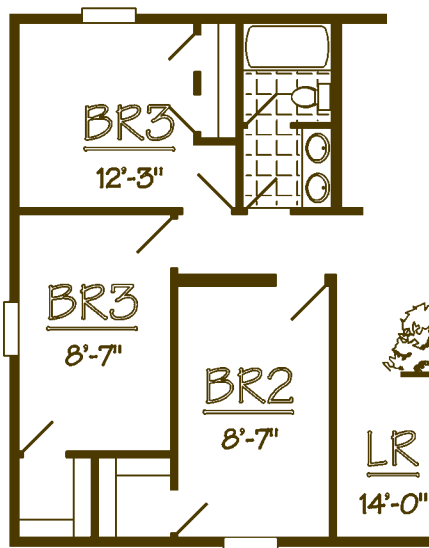
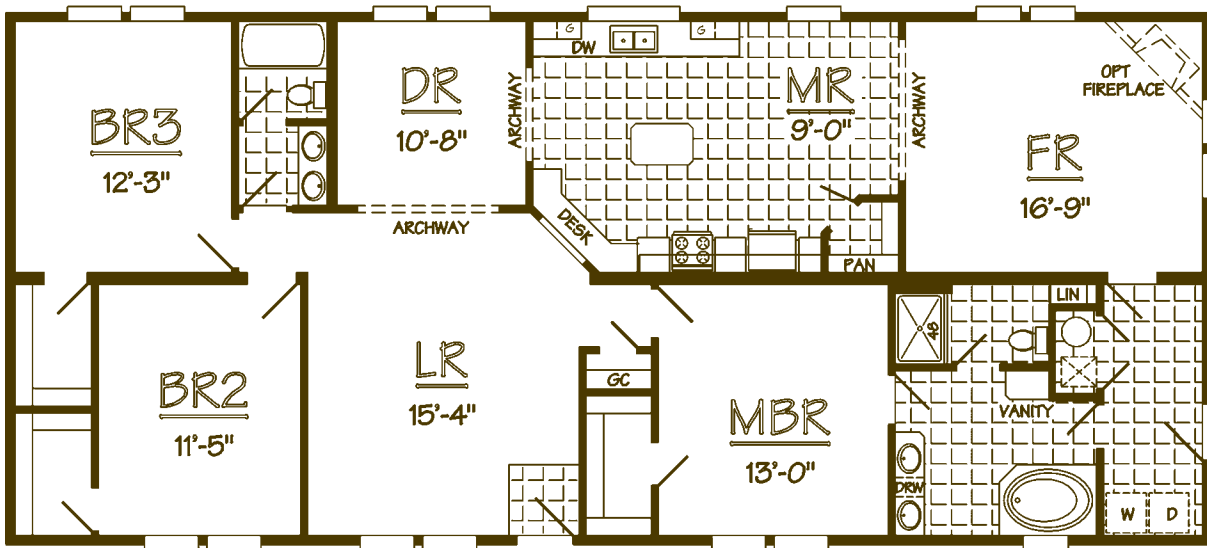
THE BREWTON

SPECS

Model Number: M4R68-A08
 Square Footage: 2040 sq. ft.
 Bedrooms: 3 Baths: 2
 Dimensions: 30'-0" x 68'-0"

HIGHLIGHTS

Combined Kitchen and Morning Room
 Giant walk-in closets throughout
 Master Bath access directly off Utility Room
 Spacious Family Room for entertaining



OPTIONAL FOUR BEDROOM LAYOUT



Elevation may reflect optional and/or site-installed features



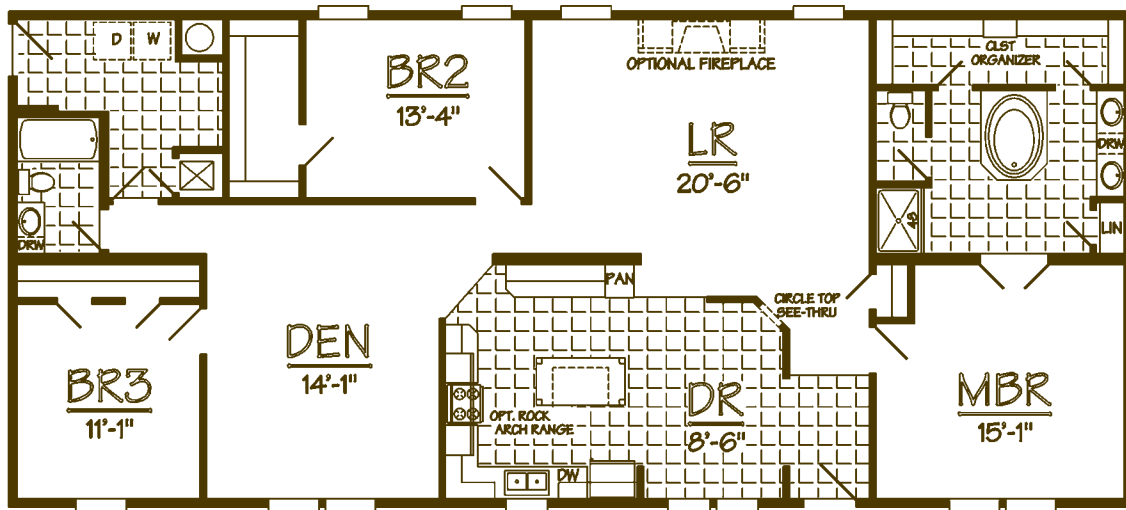
THE CARROLLTON

SPECS

Model Number: M4R68-A09
Square Footage: 2040 sq. ft.
Bedrooms: 3 Baths: 2
Dimensions: 30'-0" x 68'-0"

HIGHLIGHTS

Luxurious Master Bath with soaker tub
Large Living Room for Entertaining
Generous Kitchen with large Island
Giant walk-in closets



Elevation may reflect optional and/or site-installed features



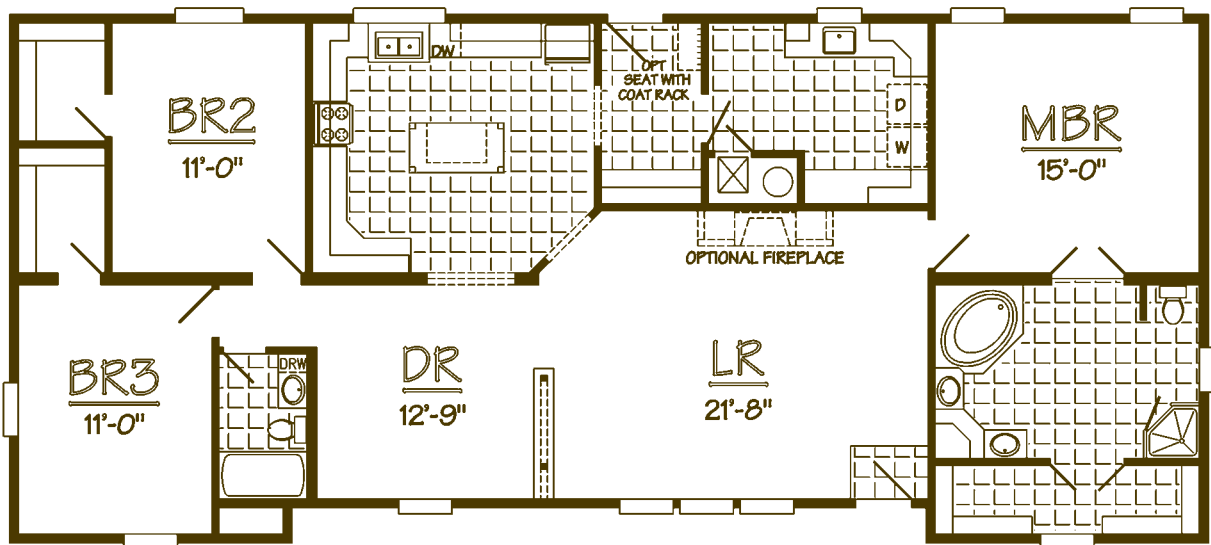
THE WINFIELD

SPECS

Model Number: M4R68-A10
Square Footage: 1968 sq. ft.
Bedrooms: 3 Baths: 2
Dimensions: 30'-0" x 68'-0"

HIGHLIGHTS

Stunning plan is the envy of the neighborhood
Open concept living at its finest
Oversized walk-in closets in all Bedrooms
Exceptional Utility with plenty of cabinetry



Elevation may reflect optional and/or site-installed features



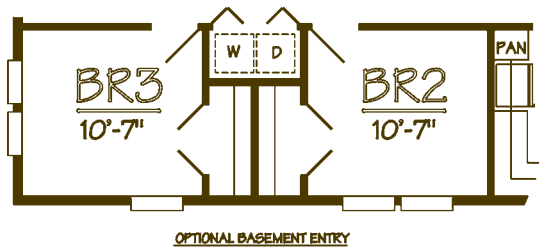
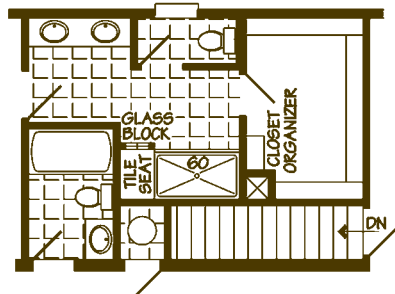
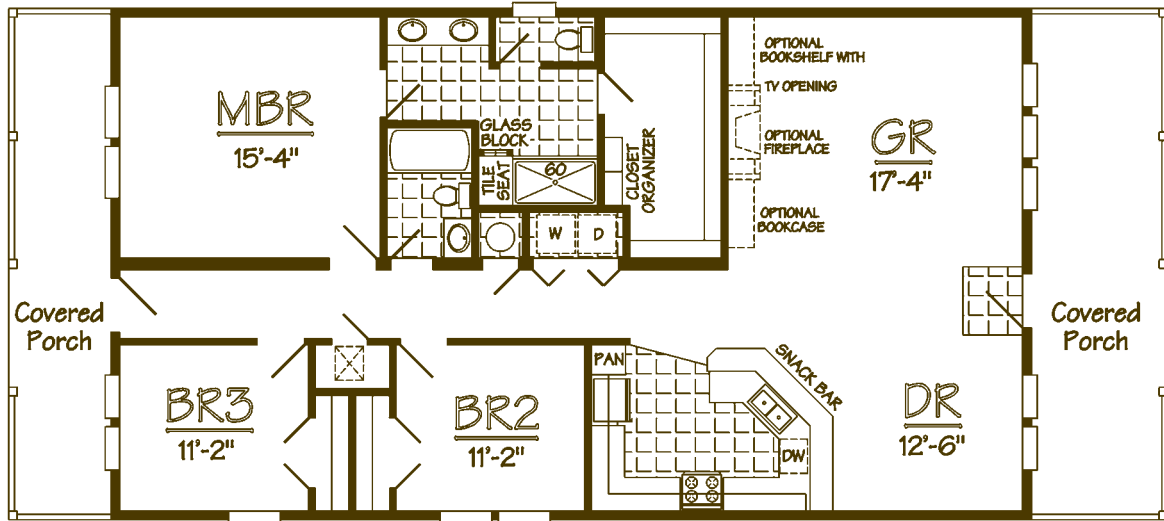
THE NEWVILLE

SPECS

Model Number: M4R68-A11
 Square Footage: 1620 sq. ft.
 Bedrooms: 3 Baths: 2
 Dimensions: 30'-0" x 68'-0"

HIGHLIGHTS

Generous Front and Rear Porch for Socializing
 Oversized Master Bath Shower with seat
 Kitchen features spacious cabinets and Snack Bar
 Spacious size Bedrooms throughout



Elevation may reflect optional and/or site-installed features



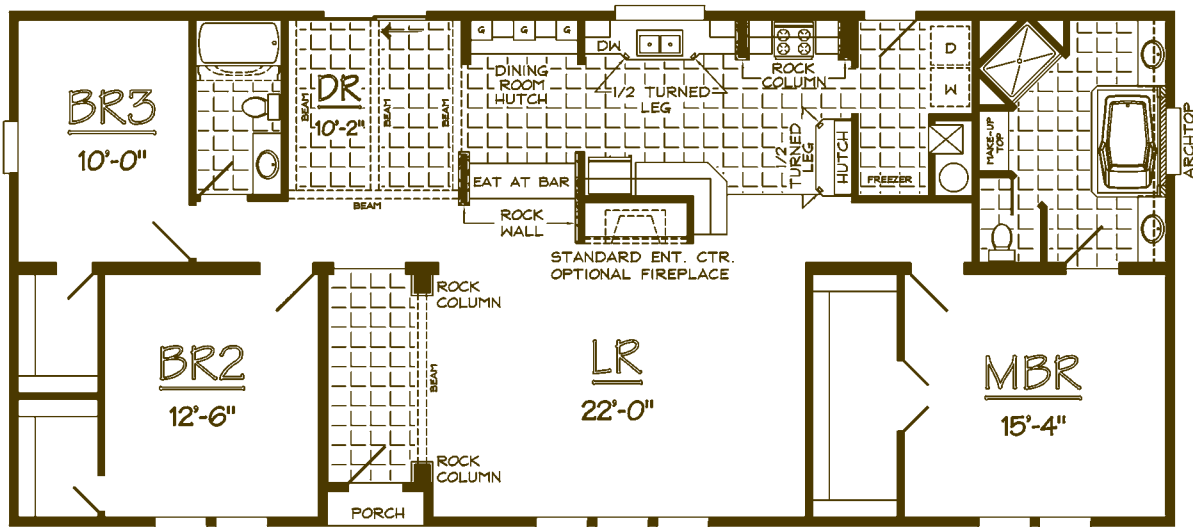
THE HARTSELLE

SPECS

Model Number: M4R68-A15
 Square Footage: 2028 sq. ft.
 Bedrooms: 3 Baths: 2
 Dimensions: 30'-0" x 68'-0"

HIGHLIGHTS

Convenient Kitchen with appealing hutch displays
 Large walk-in closets in all bedrooms
 Spacious Living Room for comfort
 Master Bath with his and her needs in mind



Elevation may reflect optional and/or site-installed features



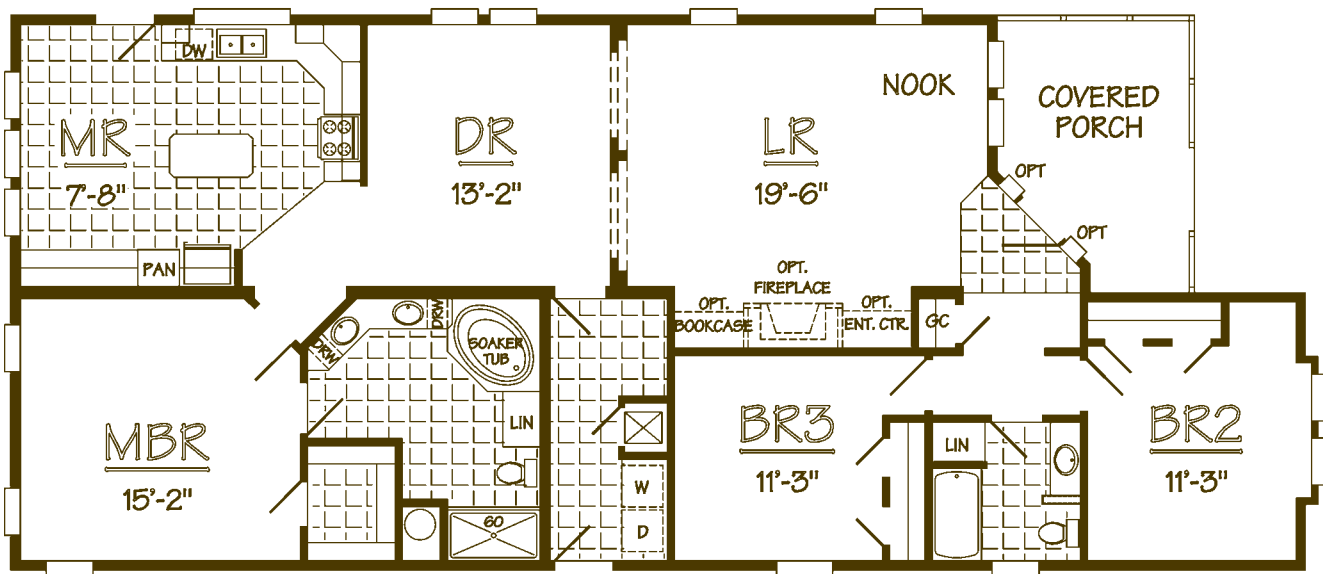
THE ENTERPRISE

SPECS

Model Number: M4R70-A03
 Square Footage: 1870 sq. ft.
 Bedrooms: 3 Baths: 2
 Dimensions: 30'-0" x 70'-0"

HIGHLIGHTS

Spacious Foyer opens into Nook and Great Room
 Generous Kitchen with island and cozy Morning Room
 Striking columns accent Dining/Great Room Open concept
 Master Suite is complete with luxury Bath



Elevation may reflect optional and/or site-installed features



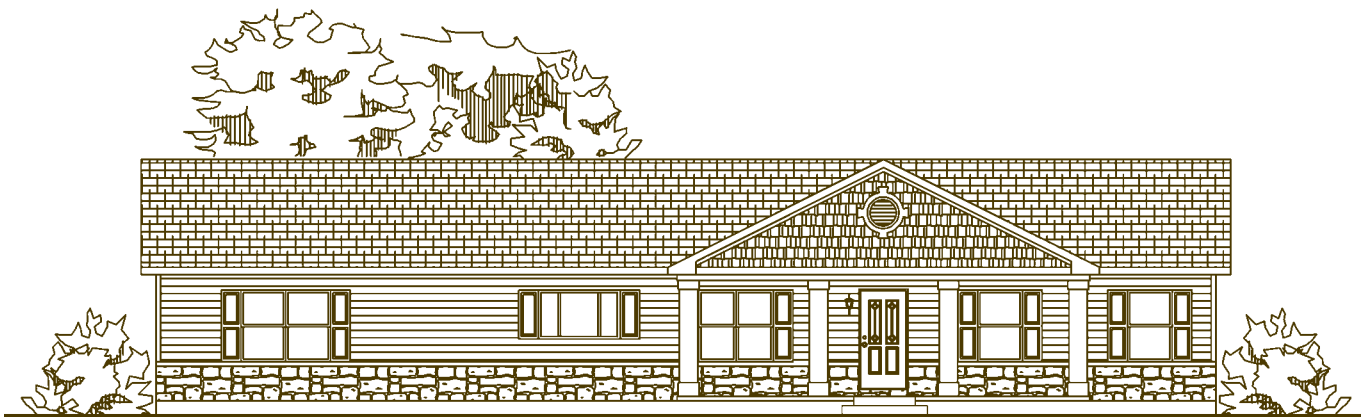
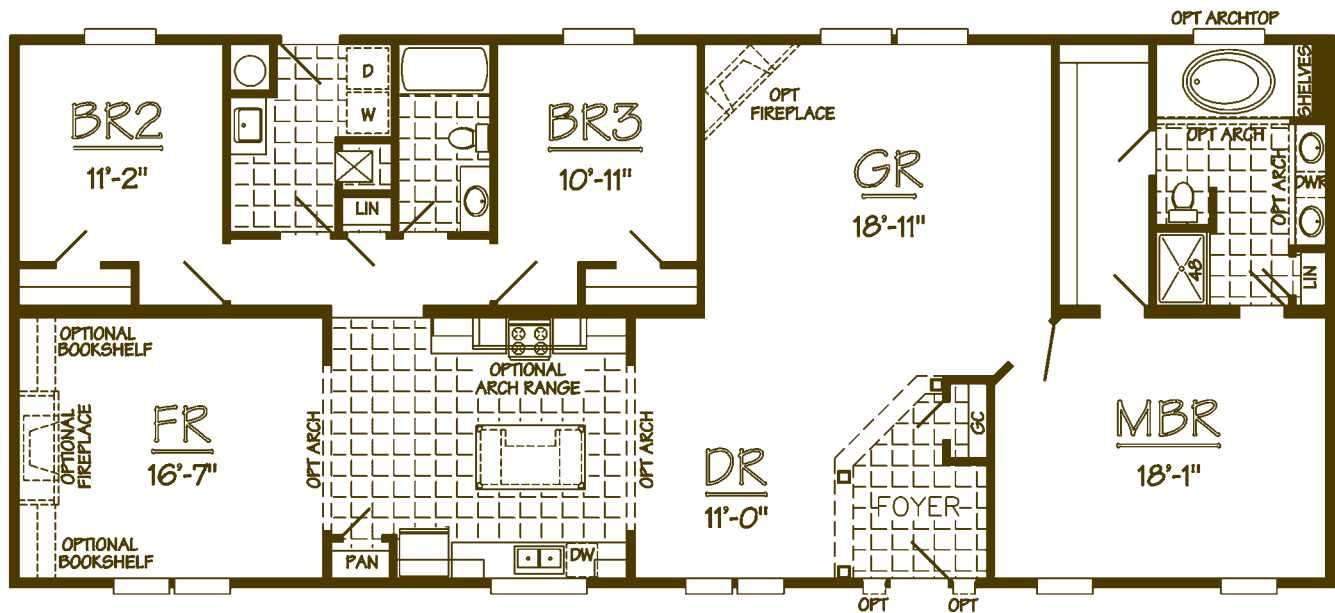
THE ODENVILLE

SPECS

Model Number: M4R72-A05
 Square Footage: 2160 sq. ft.
 Bedrooms: 3 Baths: 2
 Dimensions: 30'-0" x 72'-0"

HIGHLIGHTS

Spacious Family Room for entertaining
 Awesome Master Bath design
 Generous size Bedrooms throughout
 Large Master Bedroom with oversized walk-in closet



Elevation may reflect optional and/or site-installed features



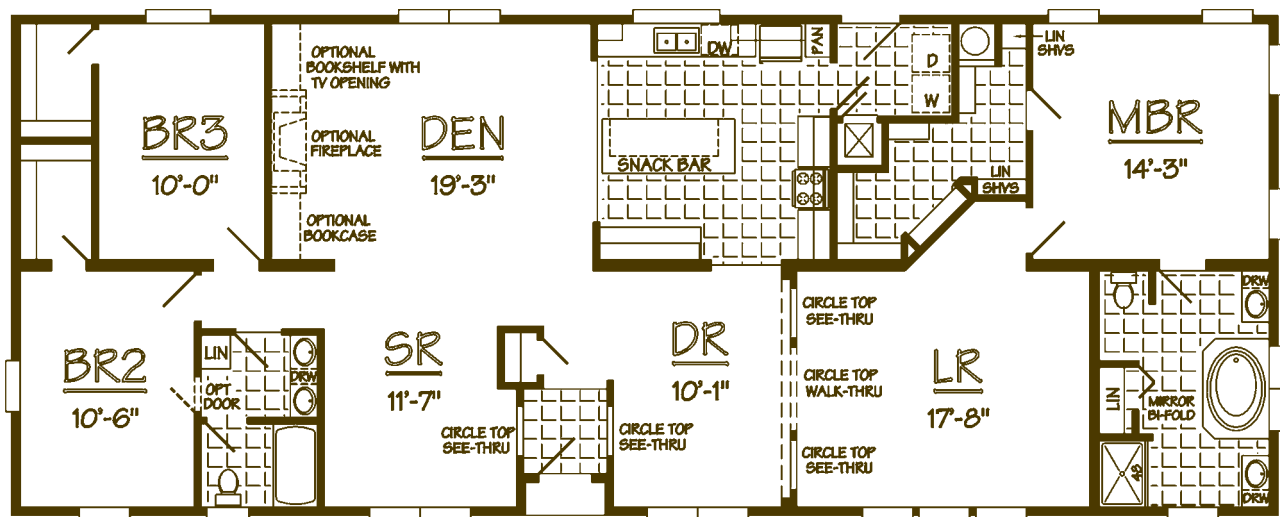
THE BESSEMER

SPECS

Model Number: M4R76-A10
 Square Footage: 2270 sq. ft.
 Bedrooms: 3 Baths: 2
 Dimensions: 30'-0" x 76'-0"

HIGHLIGHTS

Spacious Den becomes an optional Home Theater
 Generous Kitchen highlighted by enormous island
 Multi-use Sitting Room off Den
 Master Suite is complete with meandering walk-in



THIS PLAN
 AVAILABLE
 WITH OPTIONAL
12/12
 ATTIC OR CAPE ROOF



Elevation may reflect optional and/or site-installed features



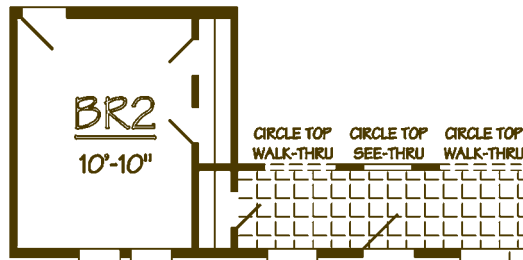
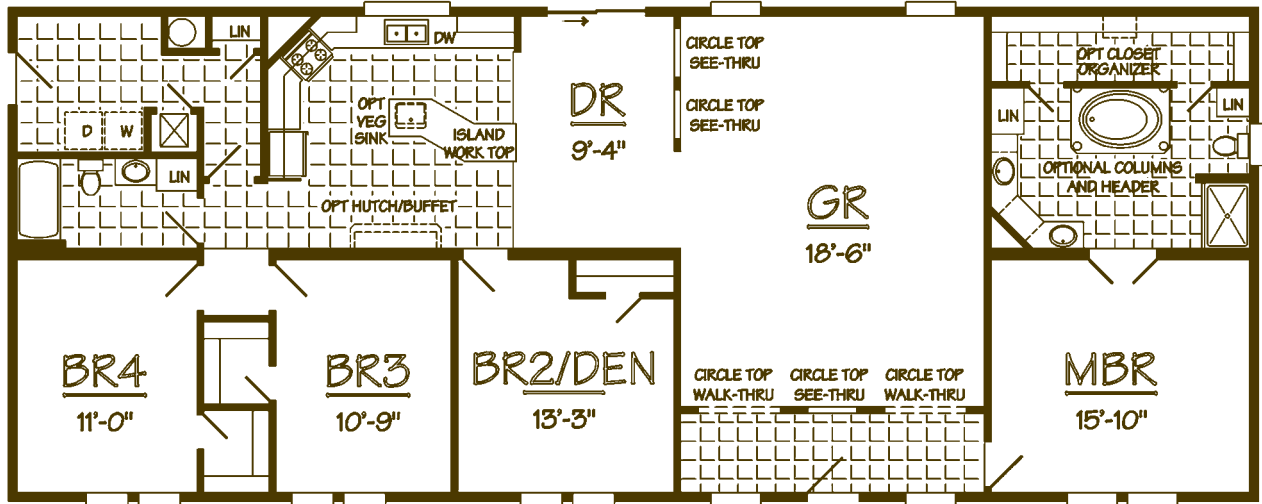
THE GREENVILLE

SPECS

Model Number: M4R76-A17
 Square Footage: 2280 sq. ft.
 Bedrooms: 4 Baths: 2
 Dimensions: 30'-0" x 76'-0"

HIGHLIGHTS

Elegant Entry leads into spacious Great Room
 Generous Closet and Storage throughout
 Opulent Master Bath has his 'n' hers sinks and Vanity
 Roomy Kitchen is complete with center work island



Elevation may reflect optional and/or site-installed features



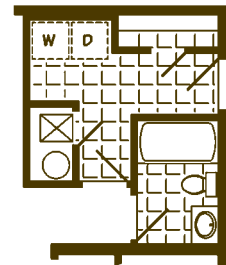
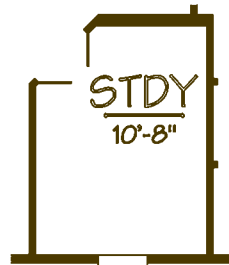
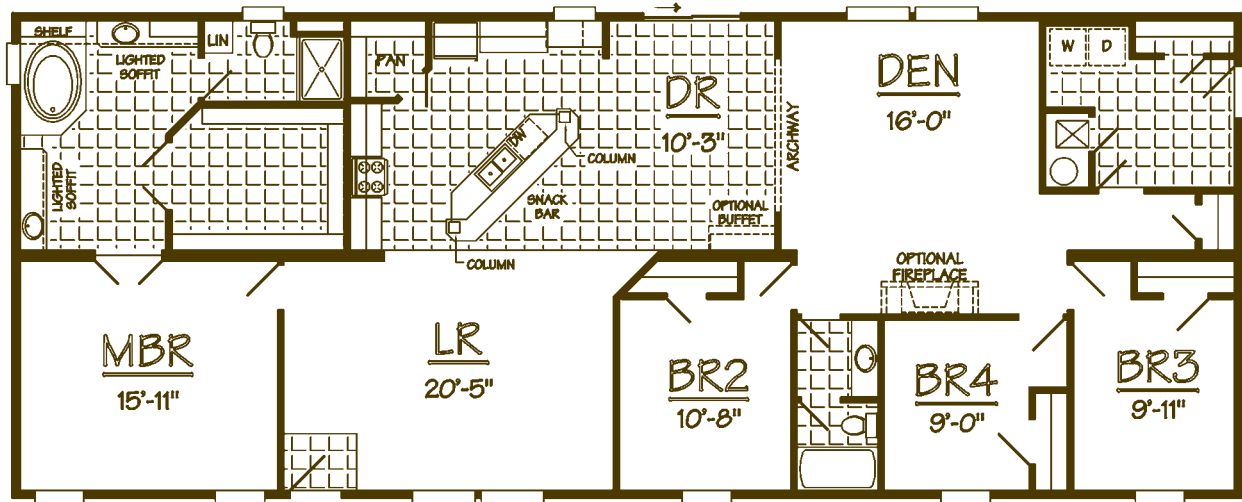
THE MONTGOMERY

SPECS

Model Number: M4R76-A18
 Square Footage: 2280 sq. ft.
 Bedrooms: 4 Baths: 2
 Dimensions: 30'-0" x 76'-0"

HIGHLIGHTS

Elegant Entry leads into spacious Great Room
 Generous Closet and Storage throughout
 Opulent Master Bath has his 'n' hers sinks
 Elegant Kitchen is complete with snack bar



Elevation may reflect optional and/or site-installed features



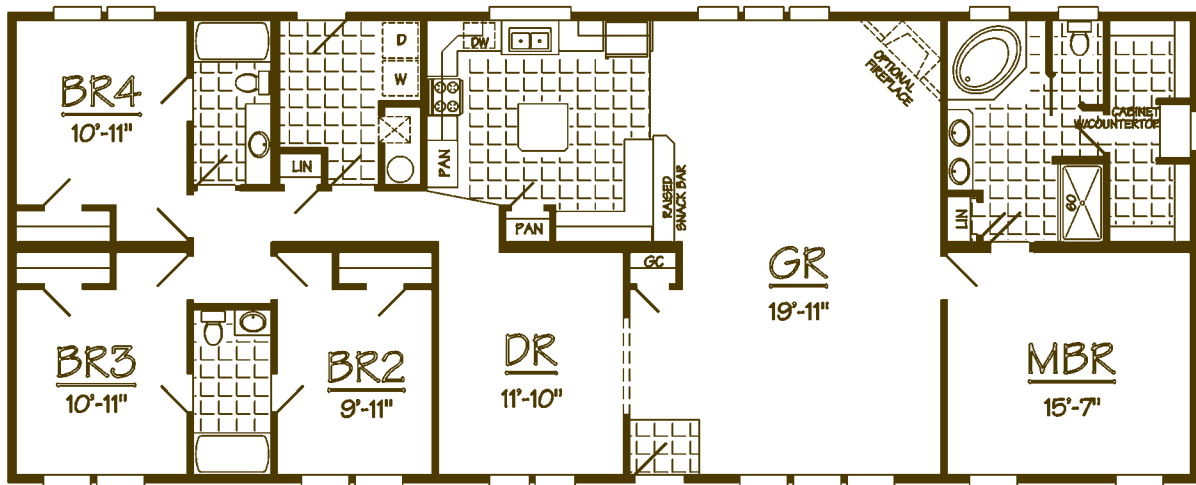
THE LINEVILLE

SPECS

Model Number: M4R76-A20
 Square Footage: 2280 sq. ft.
 Bedrooms: 4 Baths: 3
 Dimensions: 30'-0" x 76'-0"

HIGHLIGHTS

Spacious Great Room for entertaining
 Generous Closet and Storage throughout
 Private and semi-private Bathrooms through
 Elegant Kitchen is complete with snack bar



Elevation may reflect optional and/or site-installed features



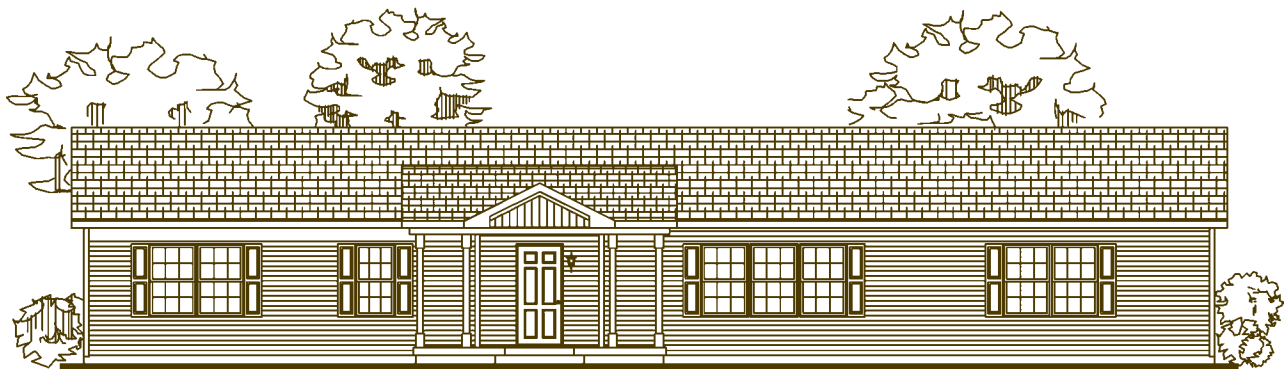
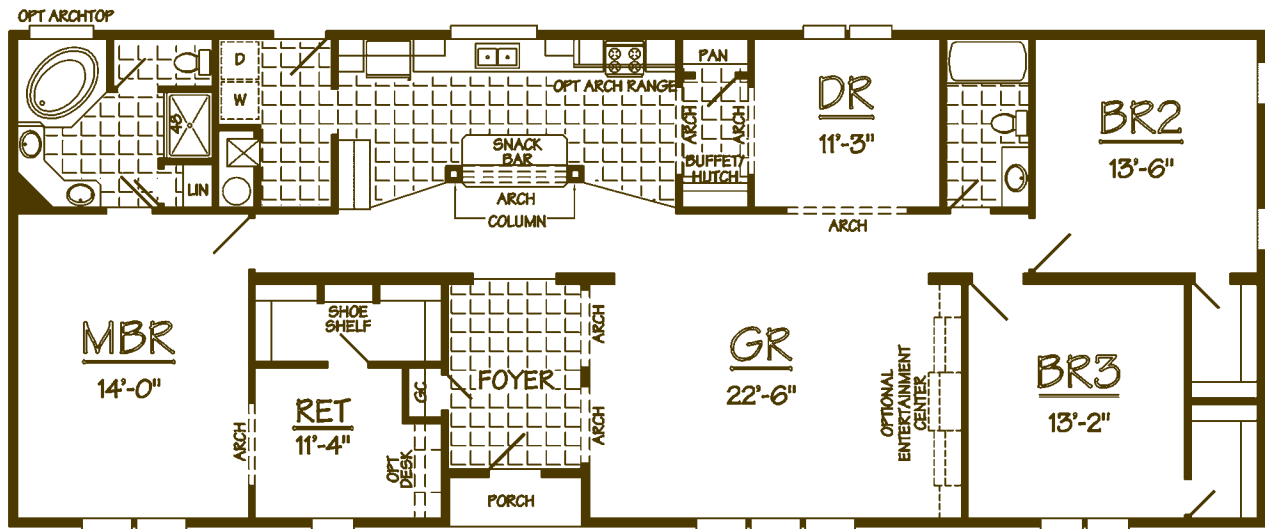
THE VERBENA

SPECS

Model Number: M4R76-A24
 Square Footage: 2256 sq. ft.
 Bedrooms: 3 Baths: 2
 Dimensions: 30'-0" x 76'-0"

HIGHLIGHTS

Spacious Walk-in Closets and Storage throughout
 Generous Master Bath has his 'n' hers sinks
 Oversized Kitchen complete with snack bar
 Elegant Foyer leads into spacious Great Room



Elevation may reflect optional and/or site-installed features



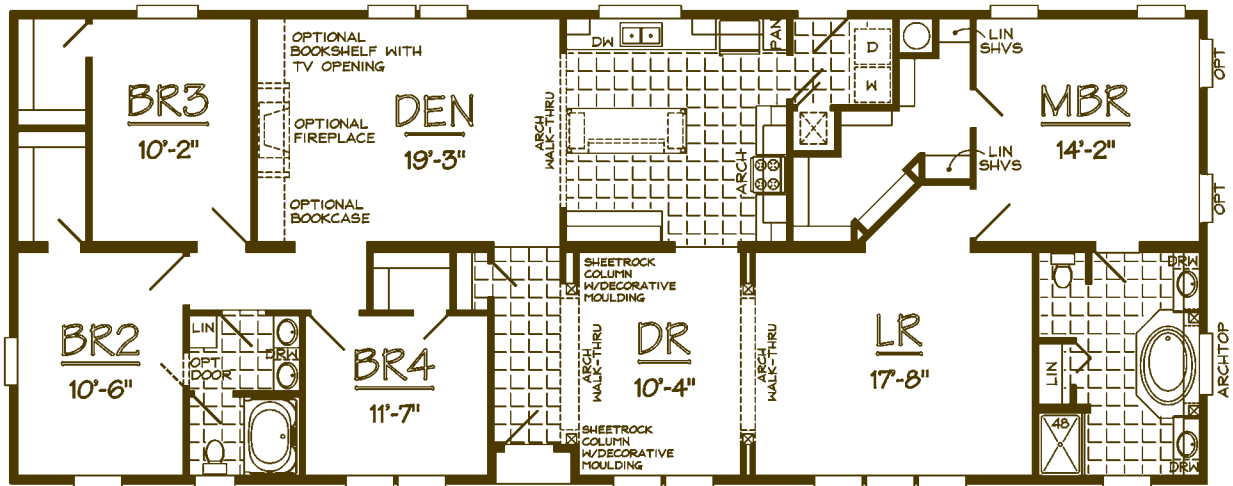
THE FLORALA

SPECS

Model Number: M4R76-A27
 Square Footage: 2280 sq. ft.
 Bedrooms: 4 Baths: 2
 Dimensions: 30'-0" x 76'-0"

HIGHLIGHTS

Large Kitchen with generous countertop space
 Den provides for great entertainment
 4th Bedroom for the family
 Formal Dining opens to a spacious Living Room



Elevation may reflect optional and/or site-installed features



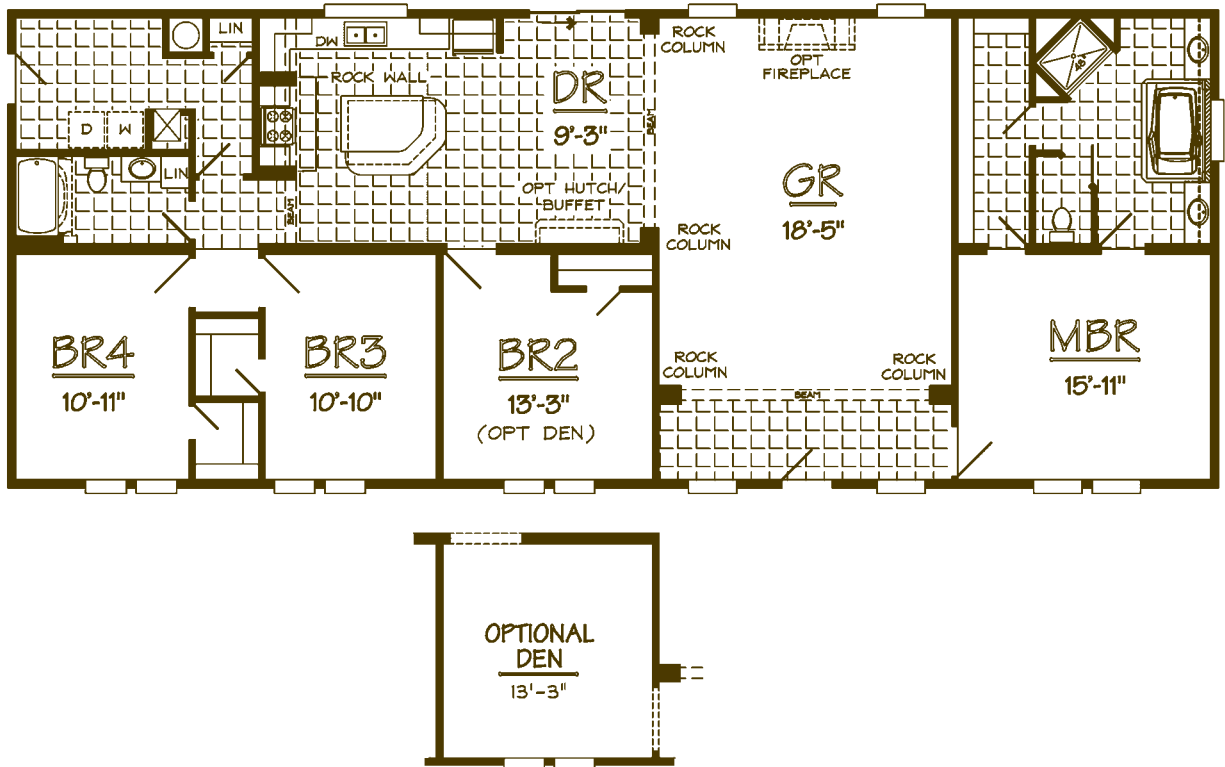
THE MENTONE

SPECS

Model Number: M4R76-A28
 Square Footage: 2280 sq. ft.
 Bedrooms: 4 Baths: 2
 Dimensions: 30'-0" x 76'-0"

HIGHLIGHTS

Convenient Kitchen Island with snack bar
 4th Bedroom with plenty of closet space
 Spacious Great Room for comfort
 Optional Den great for a computer or retreat



Elevation may reflect optional and/or site-installed features



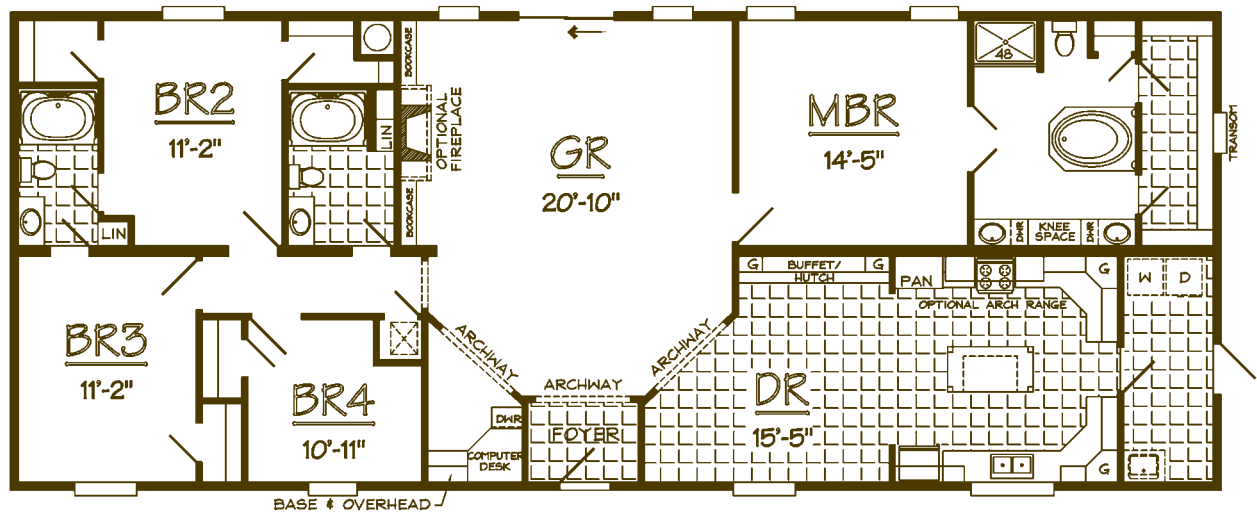
THE MONTEVALLO

SPECS

Model Number: M4R76-A29
 Square Footage: 2280 sq. ft.
 Bedrooms: 4 Baths: 3
 Dimensions: 30'-0" x 76'-0"

HIGHLIGHTS

Generous Kitchen with large island
 Luxurious Master Bath with soaker tub
 Great Room is premium for entertaining
 4 Bedrooms and 3 Baths provide great family living



Elevation may reflect optional and/or site-installed features



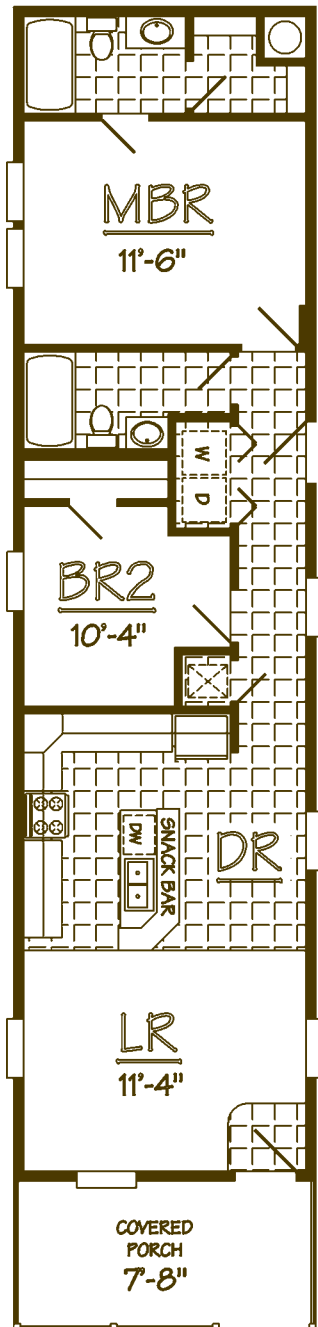
THE EDGEWATER

SPECS

Model Number: M9R68-A01
Total Living Space: 935 sq. ft.
Bedrooms: 2 Baths: 2
Dimensions: 15'-6" x 68'-0"

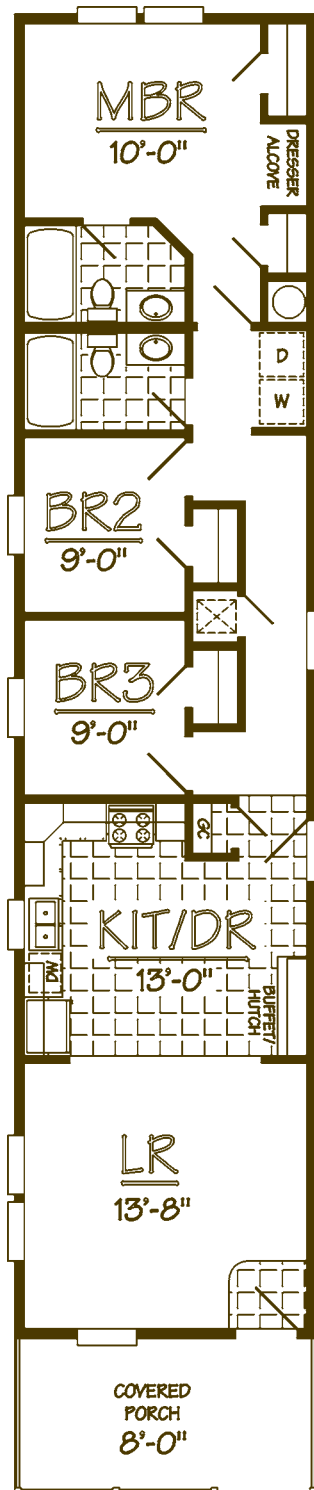
HIGHLIGHTS

Narrow lot plan ideal for tight infill lots
Living and Dining spaces flow together
Eat-in Kitchen with Snack Bar Island
Master Bedroom with Private Bath



Elevation may reflect optional and/or site-installed features





THE RIVER FALLS

SPECS

Model Number: M9R76-A12
 Total Living Space: 1054 sq. ft.
 Bedrooms: 3 Baths: 2
 Dimensions: 15'-6" x 76'-0"

HIGHLIGHTS

Narrow lot plan ideal for tight infill lots
 Living and Dining spaces flow together
 Eat-in Kitchen complete with Buffet/Hutch
 Spacious Master Bedroom and Bath



Elevation may reflect optional and/or site-installed features





Elevation may reflect optional and/or site-installed features

THE HARTFORD

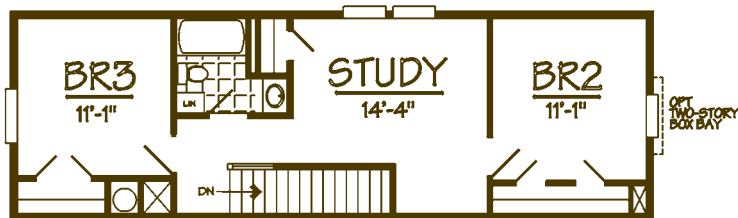
SPECS

Model Number: M6T46-A01
 Square footage: 1359 sq. ft.
 Bedrooms: 3 Baths: 2
 Dimensions: 15'-0" x 46'-0"

HIGHLIGHTS

First Floor Master Bedroom
 Great Narrow Lot Plan
 Computer/Study Area
 Spacious Kitchen/Dining

SECOND FLOOR



BR2
9'-4"

FIRST FLOOR



RECOMMENDED
SITE-BUILT
GARAGE





Elevation may reflect optional and/or site-installed features

THE JACKSON

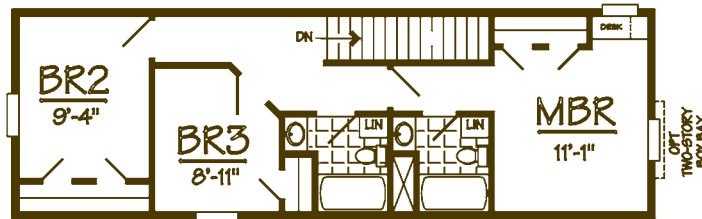
SPECS

Model Number: M6T46-A02
 Square footage: 1380 sq. ft.
 Bedrooms: 3 Baths: 2.5
 Dimensions: 15'-0" x 46'-0"

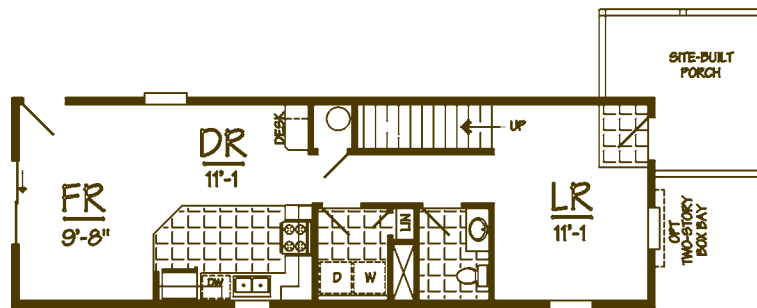
HIGHLIGHTS

Inviting Porch
 Great Narrow Lot Plan
 Family Room off Kitchen
 Plenty of Storage Throughout

SECOND FLOOR



FIRST FLOOR



WAVERLEE HOMES HAMILTON HOMES (B8) MODULARS

STANDARD FEATURES

KITCHEN

Smooth Top Self-Cleaning Electric Range (Black)
22' SXS Refrigerator with Ice & Water in Door (Black)
Dishwasher (Black)
Brushed Nickel 8" Goose Neck Faucet
Deep Stainless Steel Kitchen Sink
30" Power Vented Range Hood with Light
Mud Cap Ceramic Tile Countertop Edging
4" Ceramic Tile Backsplash
Vintage Oak Custom Cabinets
Drawer Over Door Base Cabinets
Concealed Cabinet Door Hinges
2 Adjustable Center Shelves in All Overhead Cabinets
Lined Overhead Cabinets
Bottom & Center Shelves in Base Cabinets
Cabinets Above Refrigerator
Center & Bottom Shelves in All Cabinets
Deluxe Oil Rubbed Cabinet Knobs & Pulls
Wood Cabinet Stiles
30" Raised Panel Cabinet Doors on Overhead Cabinets
2" Wide Crown Molding Trim Above Cabinets
GFI Protected Receptacles

INTERIOR DESIGN

Alabaster Glass Oil Rubbed Light Fixtures
Pendant Light Chandelier in Dining Room
Alabaster Glass Oil Rubbed Pendant Light in Morning Room
Oil Rubbed Ceiling Fan in Living Room & Family Room
All Interior Studs 16" OC
8' Residential Ceilings Throughout
Stomped Ceilings
2" Plantation Blinds on All Windows with Valances
1/2" Finished Drywall Throughout
Cathedral Arched Openings

4 1/4" Baseboard Molding Throughout except Closets
25 oz. Saxony Carpet by Shaw®
6# Rebond Carpet Pad
Omega® 16"X16" Tile in Kitchen, Utility & Bathrooms
16"X16" Tile Entry
Carpet Bar at Tile Areas
Deluxe White Metal Closet Shelving
Washer/Dryer Shelf
Plumbed & Wired for Washer/Dryer
White 6-Panel Interior Doors
Wide White Residential Door Casing Throughout (except Closets)
Solid Wrapped Door Jambs
Satin Single Lever Door Knobs
Deluxe Satin Floor Mounted Door Stops
4" White Crown Molding Throughout (except Closets)
Deluxe Door Hinges (3) All Doors
Wide Door Stop 3 Sides All Interior Doors
200 Amp Electric Service
40 Gallon "Sandhog" Water Heater
Battery Back-Up Smoke Detectors All Bedrooms & Living Area
Water Shut-Off Valves at All Sinks & Commodes

ENERGY EFFICIENCY

Nordyne Furnace – Electric (Gas Optional)
Heating & Cooling (Dual) 8-Wire Thermostat
Complete House Ventilation System
Energy Zone II Insulation: Walls R19 & Ceiling R30
Low E Thermopane Windows with Grids
Heat & Cooling Ducts in Ceiling

EXTERIOR DESIGN

Vinyl Siding with OSB Board or Plywood Backing

Deluxe Raised Panel Shutters
Hitch End & Front Door Side
2" X 10" Floor Joist 16" OC with 2" X 10" Double Rim Joists & 3/4" Tongue & Groove OSB Floor Decking – Provides a Solid Foundation
Residential 5.5/12 Roof with Architectural Shingles (30-Year Warranty)
Full 10" Overhangs
Hardie Board Fascia with Vented Eaves
2X6 Exterior Wall Studs 16" OC with 2X6 Top & Bottom Plates
38X82 Elixir Steel Front Door with Wood Jambs & Full View Storm
36X80 Elixir Steel Rear Door with Wood Jambs & Storm
Dead Bolt Locks Front & Rear Door
Black Torch Light All Exterior Doors
GFI Weatherproof Receptacle (2)
Exterior Frost Proof Faucets (2)

BATHROOM DESIGN

Custom Bath Vanities
China Lav Bowls in All Baths
Brushed Nickel Metal Faucets Throughout (Anti-Scald Valve in Showers)
Fiberglass Soaker or Corner Tub with Overflow in Master Bath
48" Fiberglass Shower Stall with Door Master Bath (Most Models)
60" Fiberglass Tub/Shower Guest Bath with Overflow
Oil Rubbed 2-Arm Vanity Light over Sink in All Baths
Decorative Wood Framed Mirrors above All Sinks
Exhaust Fan with Light All Baths
Privacy Lock on All Bathroom Doors
Pex Water Lines
Elongated Commodes with Wood Seats
GFI Protected Receptacles

11 std features - Hamilton Homes Modulars (B8).doc

Effective: 02/25/11
Rev. 02/28/11

AL-B8-II Issued: 3/11/11

