

A Plus

COLLECTION



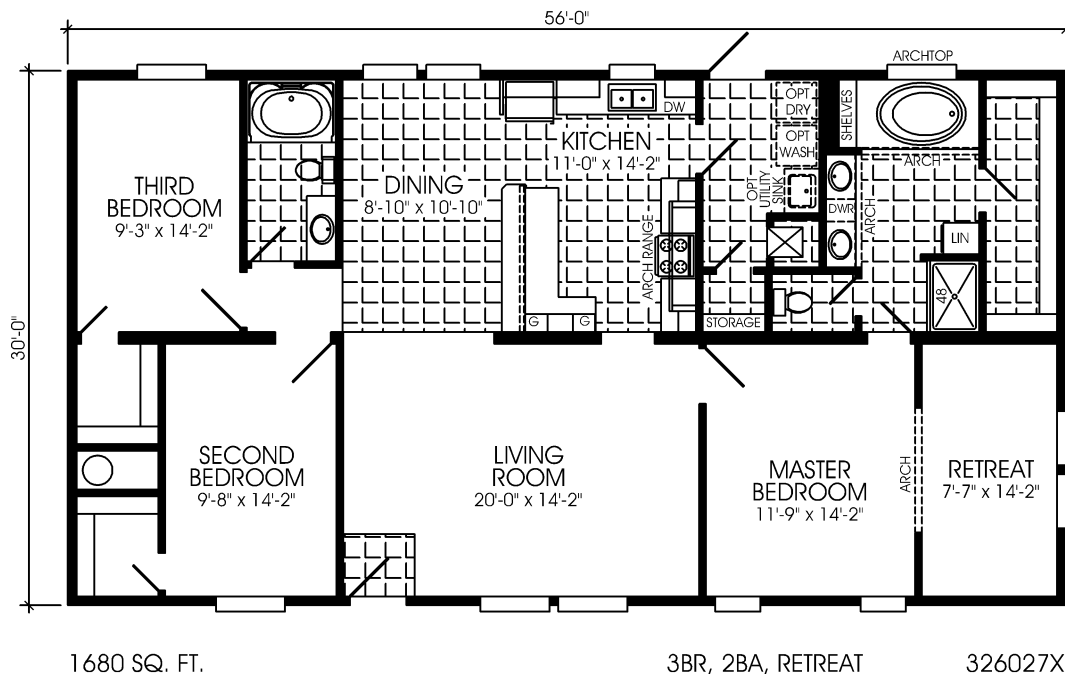
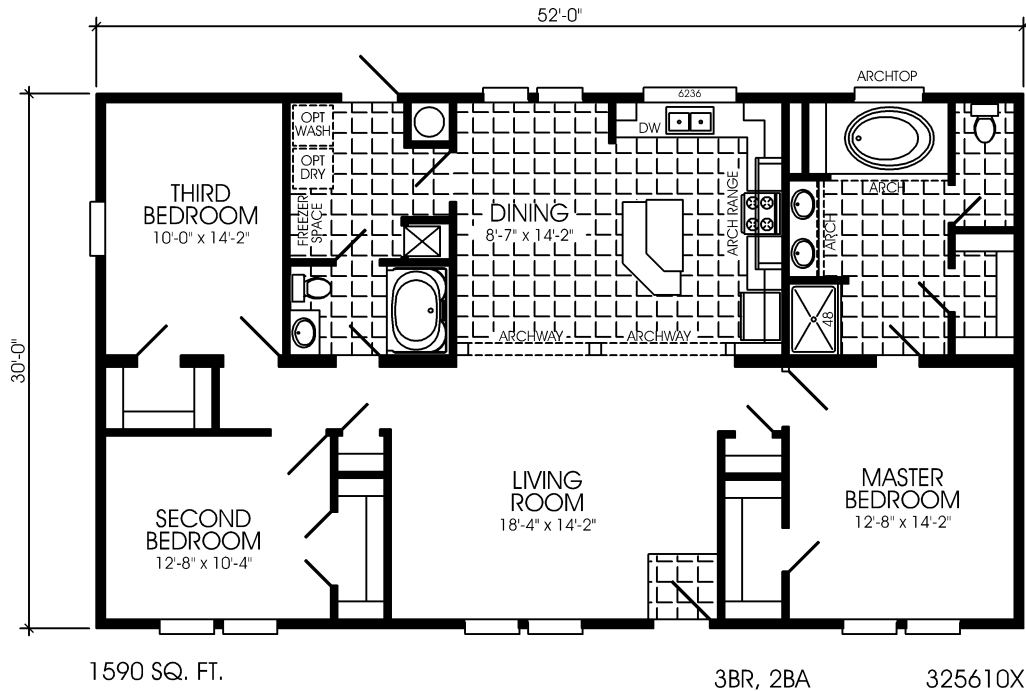
1

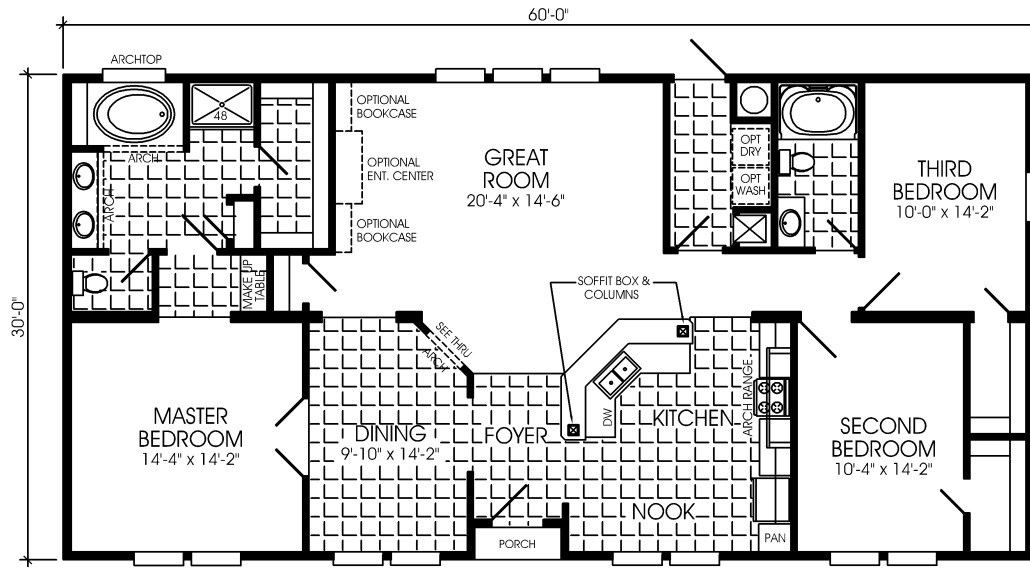
Waverlee

PRIDE. QUALITY. SATISFACTION.
With the exclusive FIVE YEAR WARRANTY.

A Plus Collection



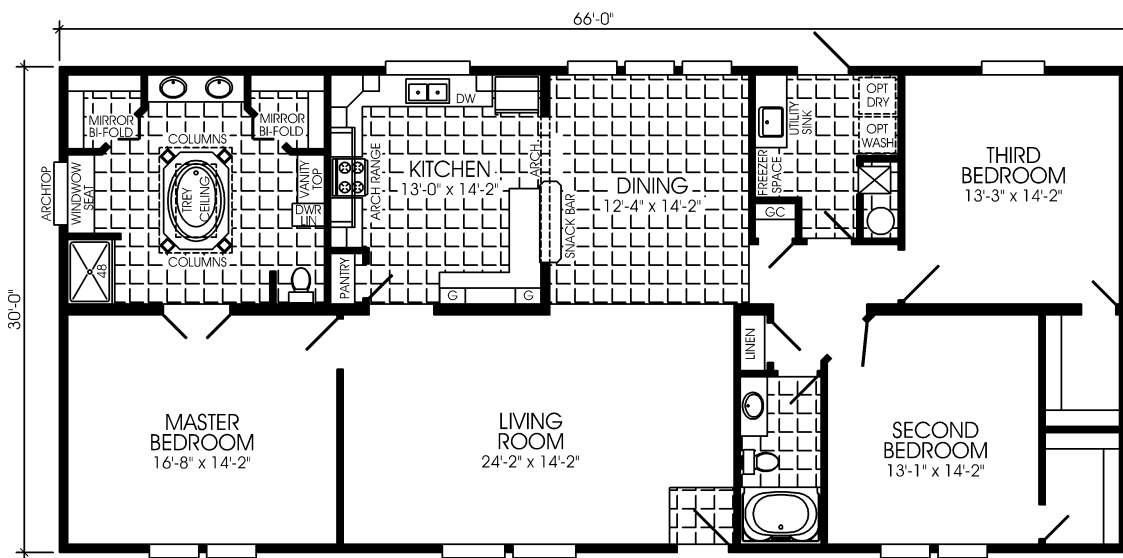




1789 SQ. FT.

3BR, 2BA, GREAT ROOM, NOOK

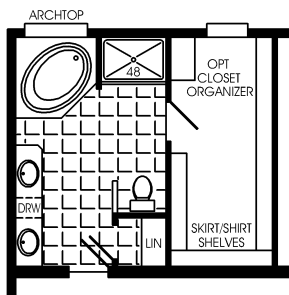
326421X



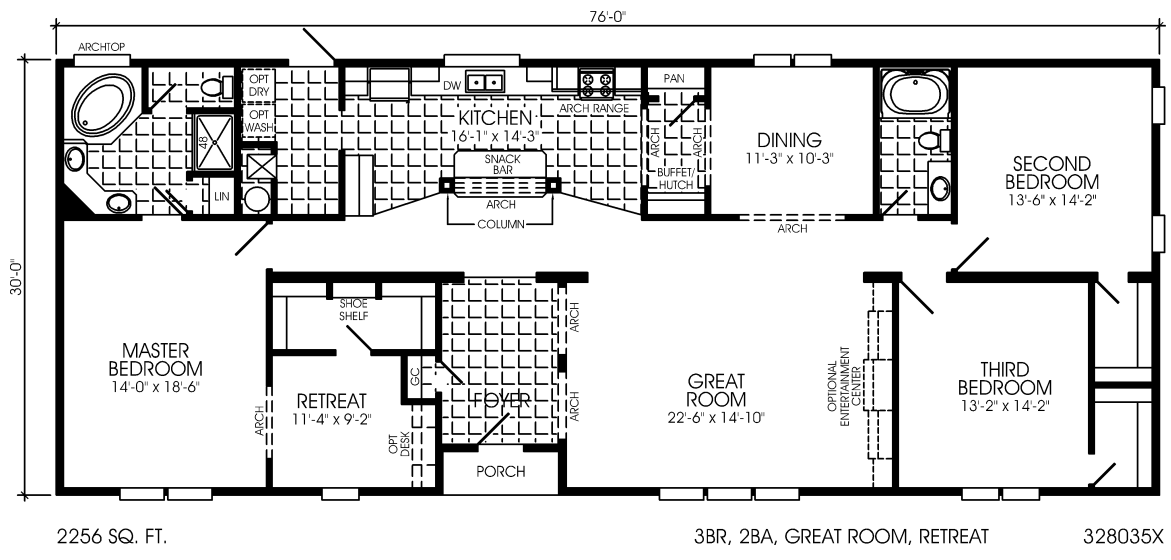
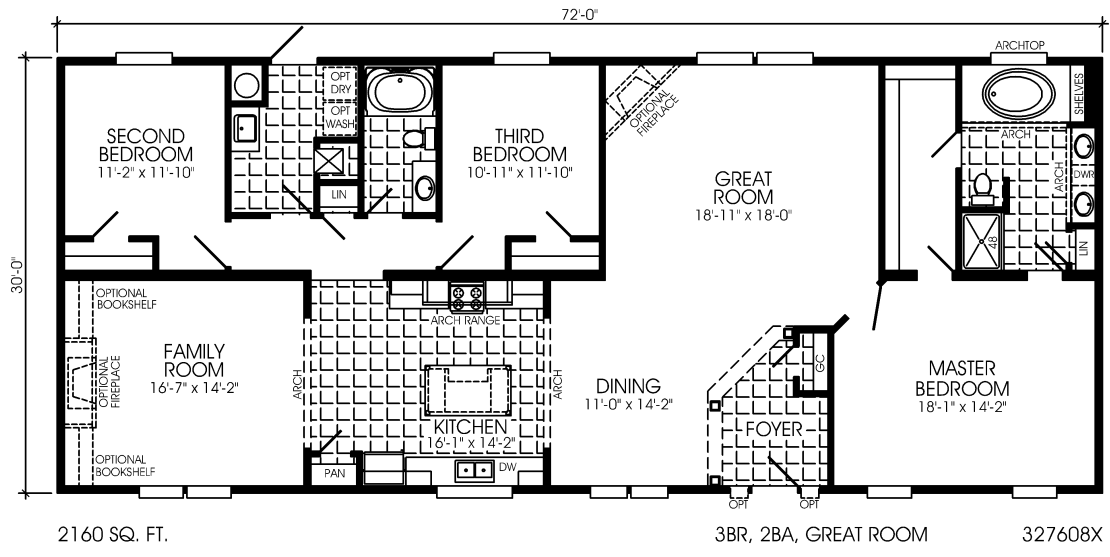
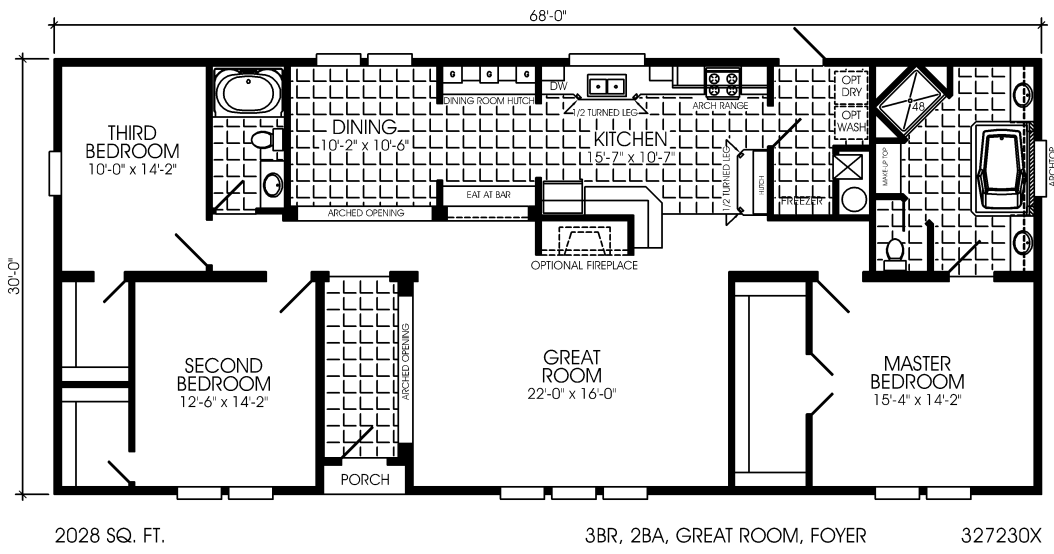
1980 SQ. FT.

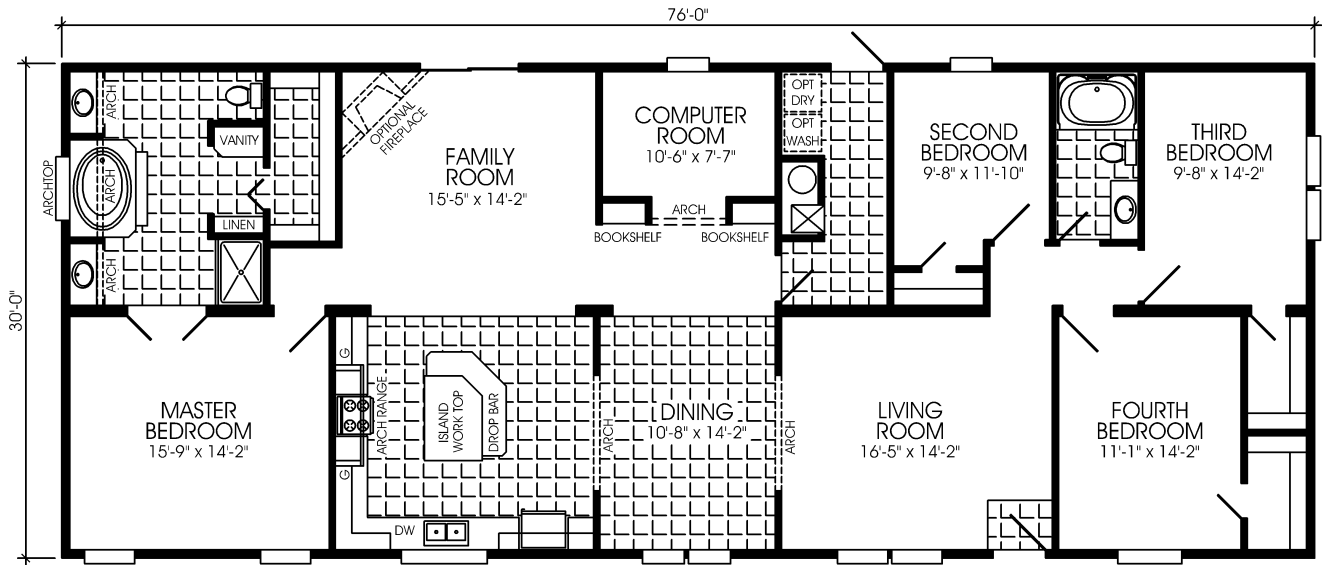
3BR, 2BA

327013X



OPTIONAL MASTER BATH
FOR 327013X

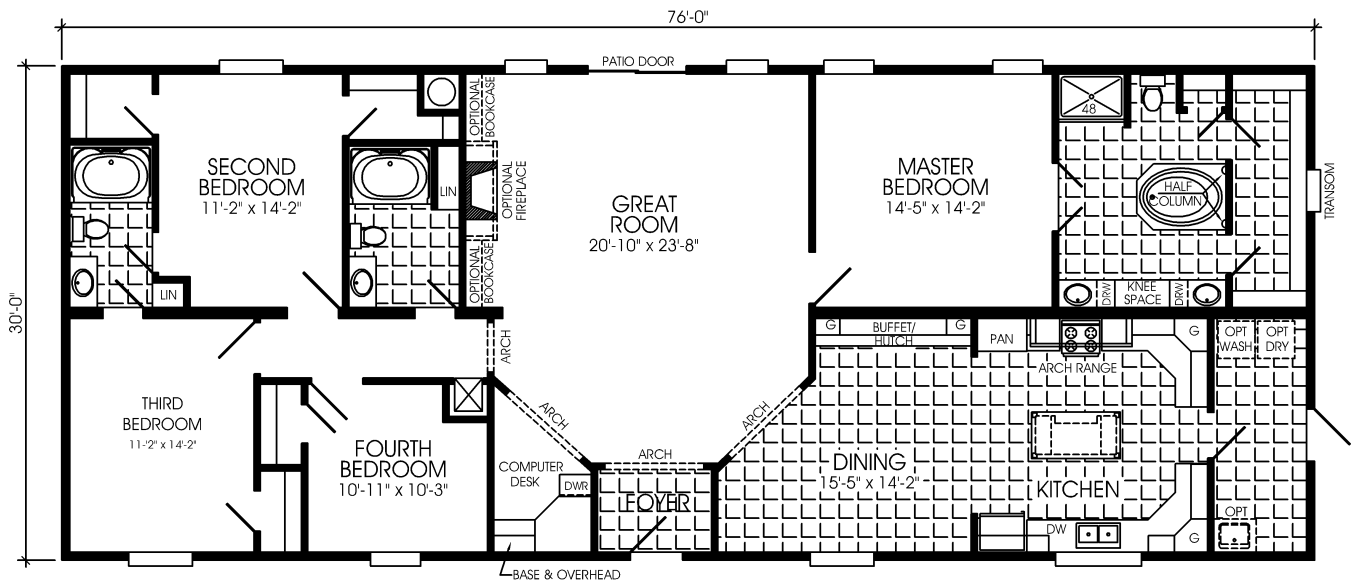




2280 SQ. FT.

4BR, 2BA, FAMILY ROOM, COMPUTER ROOM

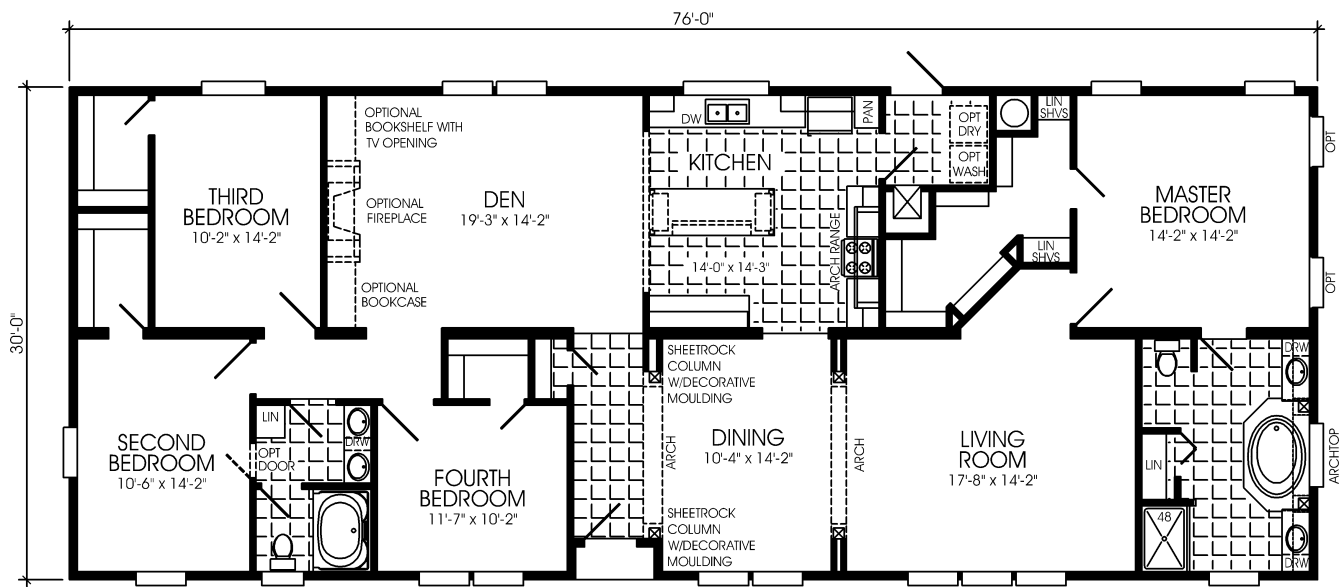
328039X



2280 SQ. FT.

4BR, 3BA, GREAT ROOM, FOYER

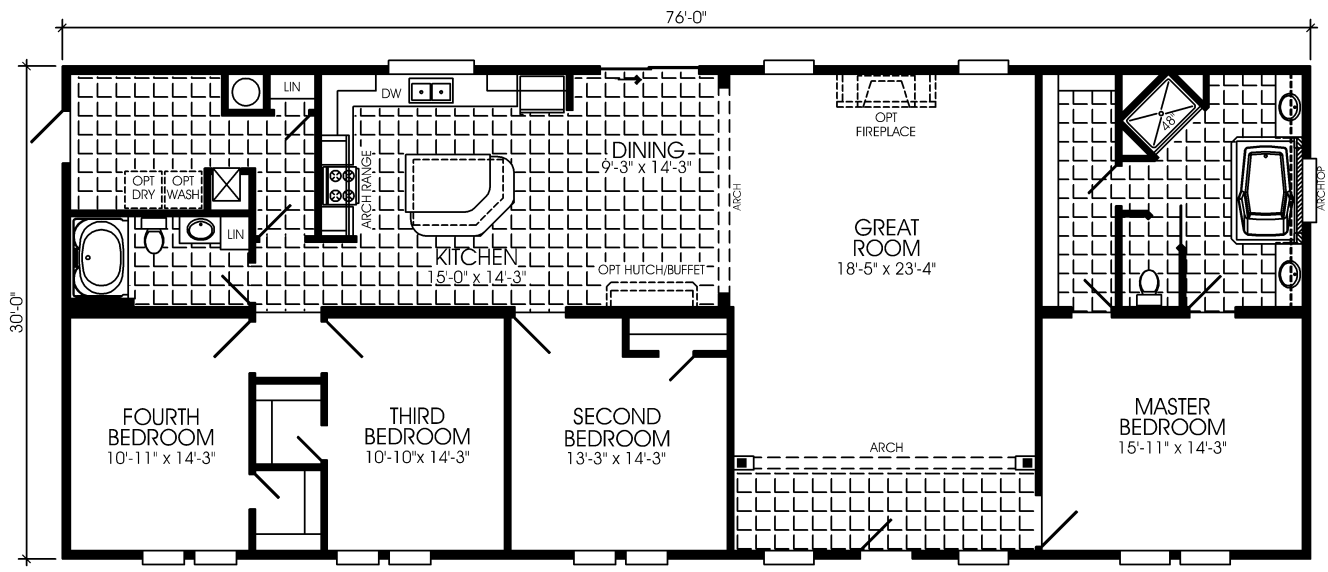
328041X



2280 SQ. FT.

4BR, 2BA, DEN

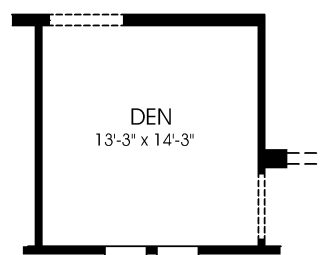
328043X



2280 SQ. FT.

4BR, 2BA, GREAT ROOM

328046X



OPTIONAL DEN
FOR 328046X

WAVERLEE HOMES

A PLUS DOUBLEWIDE (AP SERIES)

STANDARD FEATURES

KITCHEN

Smooth Top Self-Cleaning Electric Range
 22' SXS Refrigerator with Ice & Water in Door
 Dishwasher
 Brushed Nickel 8" Goose Neck Faucet
 Deep Stainless Steel Kitchen Sink
 30" Power Vented Range Hood with Light
 Mud Cap Ceramic Tile Countertop Edging
 4" Ceramic Tile Backsplash
 Ceramic Backsplash Behind Range
 Designer Arch Over Range
 Vintage Oak Custom Cabinets
 Drawer Over Door Base Cabinets
 Large Drawer Stack for Pots & Pans
 Concealed Cabinet Door Hinges
 2 Adjustable Center Shelves in All Overhead Cabinets
 Lined Overhead Cabinets
 Bottom & Center Shelves in Base Cabinets
 Cabinets Above Refrigerator
 Center & Bottom Shelves in All Cabinets
 Deluxe Oil Rubbed Cabinet Knobs & Pulls
 Wood Cabinet Stiles
 30" Raised Panel Cabinet Doors on Overhead Cabinets
 2" Wide Crown Molding Trim Above Cabinets
 GFI Protected Receptacles
 Recessed Can Lights in Kitchen (per Print)

INTERIOR DESIGN

Alabaster Glass Oil Rubbed Light Fixtures
 2 Stem Lights Over Islands
 Alabaster Glass Oil Rubbed 5-Arm Chandelier in Dining Room
 Oil Rubbed Ceiling Fan in Living Room & Family Room
 2 X 4 Interior Studs 16" OC
 8' Residential Ceilings Throughout
 Residential Stomped Ceilings
 Country Classic Drape Package with 2" Plantation Blinds Throughout
 4' Fluorescent Light in Master Bedroom Closet in Most Models

10 std features - A Plus (AP).doc

1/2" Finished Drywall Throughout
 Cathedral Arched Openings
 4 1/4" Baseboard Molding Throughout
 Saxony Carpet by Shaw®
 6# Rebond Carpet Pad
 Nafco® 16"X16" Tile in Utility & Bathrooms
 Laminated Wood Look Flooring in Kitchen & Entry
 Carpet Bar at Tile Areas
 Deluxe White Metal Closet Shelving
 Washer/Dryer Shelf
 Plumbed & Wired for Washer/Dryer
 White 6-Panel Interior Doors
 36" Wide Doors to Bedrooms
 Wide White Residential Door Casing Throughout (except Closets)
 Solid Wrapped Door Jambs
 Satin Single Lever Door Knobs
 Deluxe Satin Floor Mounted Door Stops
 5" White Crown Molding Throughout (except Closets)
 Deluxe Door Hinges (3) All Doors
 Wide Door Stop 3 Sides All Interior Doors
 Deluxe White Window Trim
 200 Amp Electric Service
 40 Gallon "Sandhog" Water Heater
 Water Heater On/Off Switch
 Battery Back-Up Smoke Detectors All Bedrooms & Living Area
 Water Shut-Off Valves at All Sinks & Commodes
 Whole House Water Shut-Off Valve

ENERGY EFFICIENCY

Nordyne Furnace - Gas or Electric
 Programmable Thermostat
 Complete House Ventilation System
 Energy Zone II Insulation: Floors R11, Walls R19 & Ceiling R30
 60" Thermopane Windows with Grids - Most Windows

EXTERIOR DESIGN

Vinyl Siding with OSB Board or Plywood Backing
 Deluxe Raised Panel Shutters
 Hitch End & Front Door Side
 Steel I-Beam Frame
 3/4" Plywood Floor Decking

16" OC Floor Joist
 2" X 8" Floor Joist on 32' Wide Models
 Detachable Hitch
 Shingled Roof with Rafters:
 16" OC 32' Wides
 24" OC 28' Wides & All Hinged Roofs
 Full 10" Overhangs
 Hardie Board Fascia with Vented Eaves
 20' Dormer
 2X6 Exterior Wall Studs 16" OC with 2" X 6" Top & Bottom Plates
 36X80 Elixir Steel Front Door with Wood Jambs & Full View Storm
 36X80 Elixir Steel 9 Lite Rear Door
 Dead Bolt Locks Front & Rear Door
 Black Torch Light All Exterior Doors
 GFI Weatherproof Receptacle
 Exterior Frostproof Faucets (2)
BATHROOM DESIGN
 Custom Bath Vanities
 China Lav Bowls in All Baths
 Ceramic Edging & 4" Backsplash on Lavs & Tub Bases
 Arched Window in Master Bath
 Brushed Nickel Metal Faucets Throughout
 Fiberglass Soaker or Corner Tub in Master Bath
 48" Fiberglass Shower Stall with Door Master Bath in Most Models
 Rainmaker Shower Head in Shower Stall
 60" Fiberglass Tub/Shower Guest Bath
 Oil Rubbed Waldrige Vanity Light over Sink in All Baths
 Designer Framed Mirrors above All Sinks
 Exhaust Fan with Light All Baths
 Privacy Lock on All Bathroom Doors
 Pex Water Lines
 Elongated Commodes with Wood Seats
 GFI Protected Receptacles

Effective: 03/09/10
 Rev. 03/10/10

AL-APAQ-10 Issued: 3/5/10